



**MAYOR'S STEERING  
COMMITTEE MEETING**  
**DOWNTOWN INFRASTRUCTURE  
IMPROVEMENT & RECONSTRUCTION  
PROJECT**

**CITY OF KEENE, NEW HAMPSHIRE**

**June 21, 2022**



# Agenda

01 // Introduction

02 // Understanding + Opportunities

03 // Overall Plan

04 // Schedule

# Teaming Structure



**PRINCIPAL-IN-CHARGE**

Gerard Fortin, PE

**PROJECT DIRECTOR, ENGINEERING STUDY**

Ed Roberge, PE

**PROJECT DIRECTOR, ENGINEERING DESIGN**

David McNamara, PE

**PUBLIC ENGAGEMENT**

Edward Roberge, PE  
David McNamara, PE  
Liza Cohen  
Jeff Sauser

**PROJECT VISION + DESIGN TEAM**

Bob Corning, RLA, LEED AP  
Travis Ewen, RLA  
Adam Fearing, ASLA  
Liza Cohen  
Chris Bridle

**PROJECT TECHNICAL ADVISORS**

**Historic Resources**, *Preservation Company*  
Lynne Monroe  
  
**Archaeological**, IAC  
Jesse Cofelice  
  
**Land Survey**, *Promised Land Survey*  
Timothy Peloquin, LLS, ESQ.

**PLACEMAKING/URBAN DESIGN**

**INFRASTRUCTURE**

**Landscape + Urban Design**

Bob Corning, RLA  
Ngan Han, RLA  
Adam Fearing  
Travis Ewen, RLA

**Mobility + Parking**

Liza Cohen

**Traffic + Transportation**

Evan Drew, PE, PTOE  
Sarah Borenstein, EIT

**Complete Street Design**

Brandon Rayno, PE  
Aleece D'Onofrio, PE

**Urban Design**

Jeff Sauser  
Chris Bridle

**Lighting**

Maegan Crowley, LEED AP

**Civil/Site Design**

David McNamara, PE  
Tyler Gagnon, EIT

**Environmental + Permitting**

Alex Pries  
Michael Leach, CWS, CPES

**Geotechnical**

Trey Dykstra, PE

**Stormwater + Utilities**

Tracey Tufts, PE  
Alanna Gerton, EIT

**Water/Sewer Design**

Erica Lotz, PE, EVN SP  
Bryan Rouff, PE

**Accessibility Design**

Allana Gerton, EIT

**Structural**

Daniel Taylor, PE

**Electrical**

Dan Hallahan, PE, LC

**Contaminated/Hazardous Materials**

Dave Allwine, PG  
Leigh Anne Sapienza

## 02 // Understanding + Opportunities



# Expand the Downtown District



# Utility Infrastructure Improvements



## Public Utilities (Water, Sewer, Storm Drain)

- Aging Infrastructure
- Proposed Improvements
- Coordination/Phased Construction



## Private Utilities (Electric, Telephone, Communications)

- Underground Infrastructure
- Construction Coordination
- Upgrades



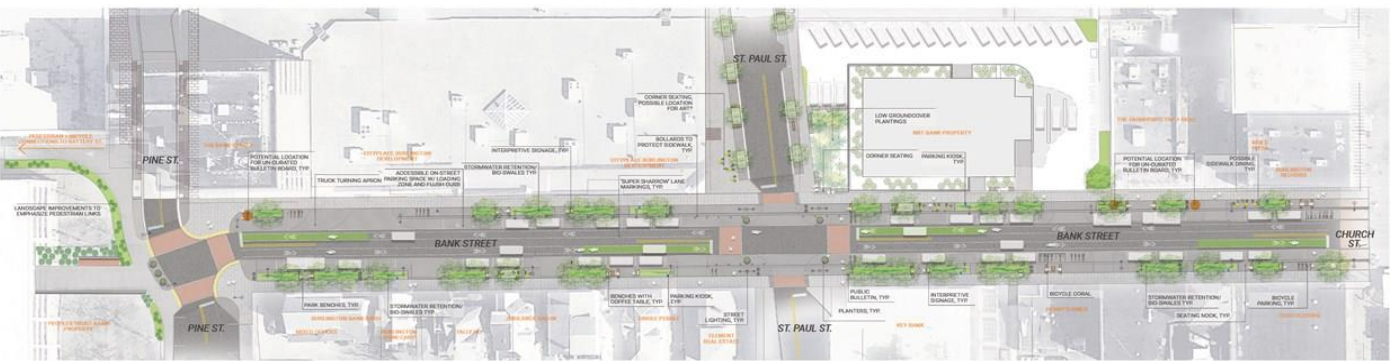
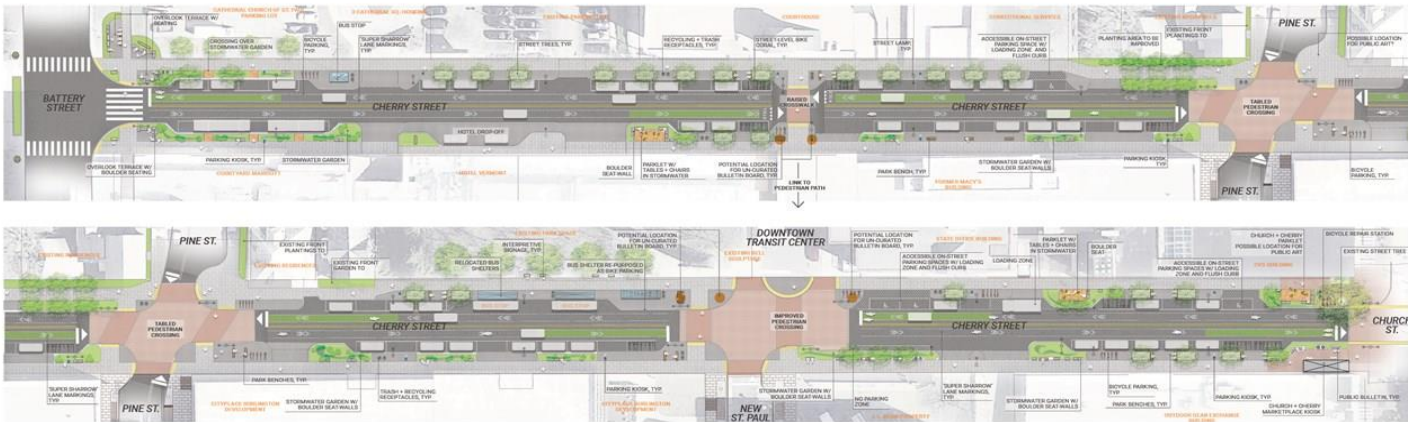
# Strengthen Image & Character of Downtown Keene



Expand to Create More Flexible Open Spaces to Support Events and Gatherings



# Great Streets, Burlington, VT



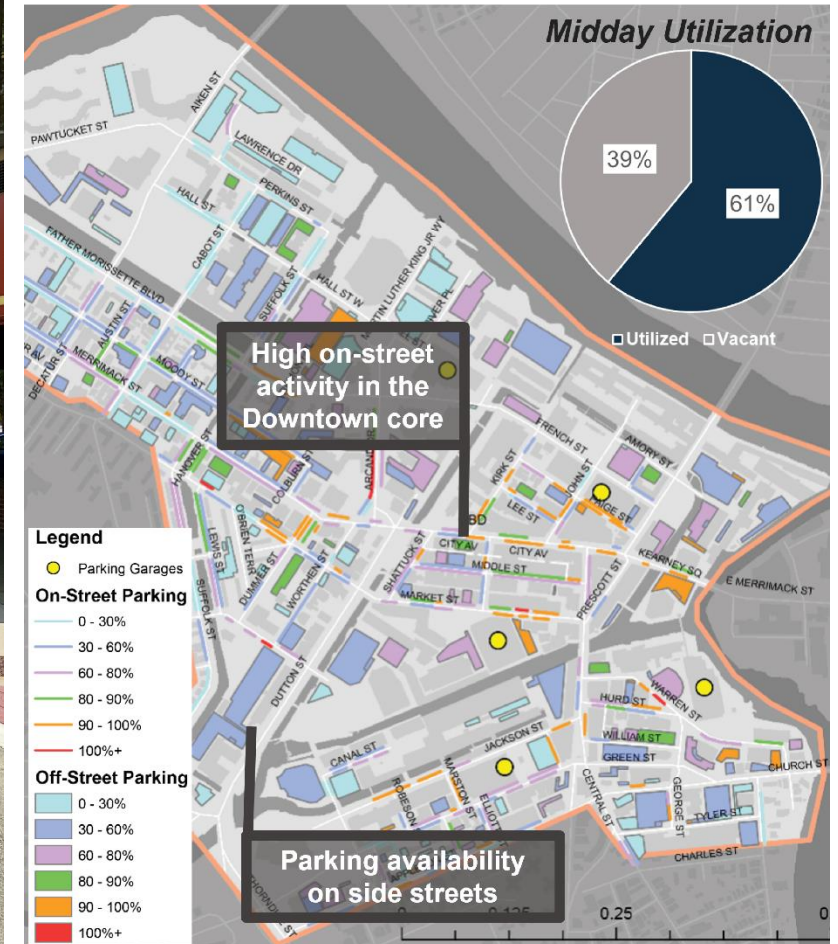
- CONCEPT IMAGE LABELS**
- 01 MEET EXISTING CHURCH ST. PAVING/CROSSWALK
  - 02 STREET LIGHTS TO MATCH CHURCH ST.
  - 03 DETECTABLE WARNING STRIPS/DETECTABLE PAVERS
  - 04 OVERHEAD LIGHTING / BANNERS ON LIGHT POLES
  - 05 'SUPER SHARROW' BICYCLE TRAVEL LANE
  - 06 ON-STREET BIKE PARKING
  - 07 DETECTABLE WARNING STRIPS/DETECTABLE PAVERS
  - 08 SIDEWALK ZONE
  - 09 STORMWATER RETENTION/BIO-SWALES WITH INTERPRETIVE SIGNAGE
  - 10 STEP-OFF ZONE/PARKING BUFFER
  - 11 PARKING ZONE
  - 12 PARKING ZONE
  - 13 PARK BENCHES/SEATING NOOKS
  - 14 FLUSH CURB TO SEPARATE PARKING/DRIVE LANES
  - 15 TRASH AND RECYCLING RECEPTACLES
  - 16 SLOW TWO-WAY TRAFFIC

## Improve Multi-Modal Transportation Access, Prioritizing Pedestrians and Bicycles (Walkability)

# “Right Size” Parking



## SAMPLE PARKING DEMAND MAP & CHART



# Embrace Opportunities for a More Sustainable Built Environment

## Integrated Stormwater Management

An important goal of the new garage project was to maximize opportunities to treat volume and water quality of stormwater generated by the project before it discharges into the Charles River. The systems shown illustrate strategies that reduces the immediate and future stormwater runoff on-site while also providing a multi-seasonal interest community park.

- HIGHLIGHTED STORMWATER FEATURES**
- 1 **Roof Runoff Captured & Filtered**  
Filters stormwater from over 71,000 SF of roof area.
  - 2 **Stormceptor Filter**  
Fretfoats and filters, removing debris and pollutants from stormwater runoff captured from the garage roof.
  - 3 **Rainwater Harvesting Cisterns**  
Collects up to 16,000 gallons of stormwater runoff from garage roof to irrigate community park.
  - 4 **Permeable Paving**  
Filtrates stormwater runoff from 10,000 SF of paved area by allowing directly into the ground.
  - 5 **Subsurface Stormwater Detention Chambers**  
Collects and detains up to 1.5 million gallons of stormwater runoff before slowly releasing.
  - 6 **Boardwalk over Planted Swale**  
Swale collects and filters runoff from 19,000 SF of impervious surfaces, promoting infiltration.
  - 7 **Landscape Planting to Mitigate Stormwater Runoff**  
24,000 SF of landscape planting installed; 8,000 SF of parking lot converted to parkland.



# Public Process + Engagement

## Public Participation Plan (PPP)

- List the study issues
- Establish communication protocols
- Identify Advisory, Stakeholder and Technical Review Committees
- Prepare meeting and event schedules

## Community Engagement

- Mayor's Ad-Hoc Advisory Committee
- Focus Groups (Technical Advisory Committee, Stakeholder, Business Groups)
- Online Presence
- Public Workshops

03 // Overall Plan





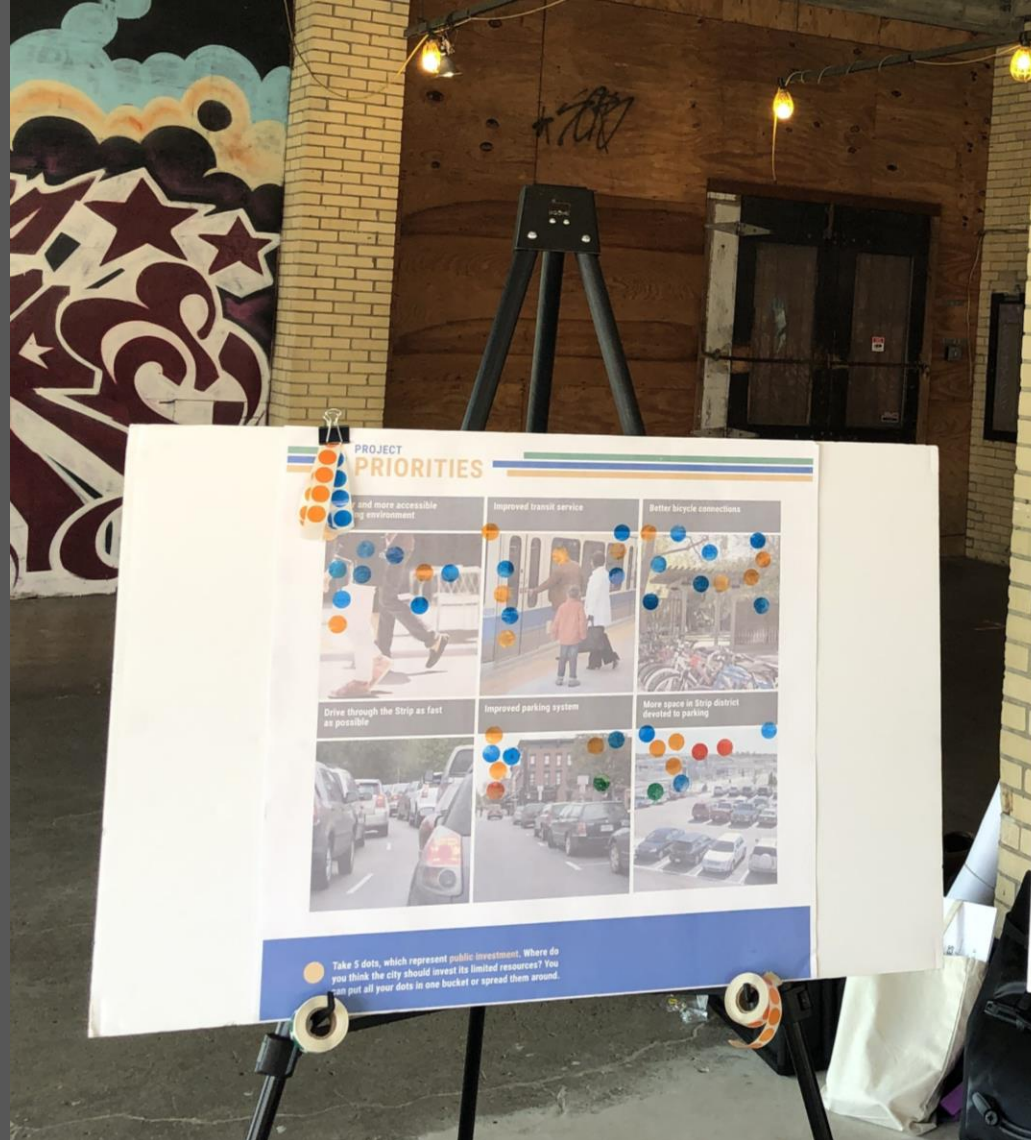
## Overall Plan

- Data Collection and Review
- Prepare Base Mapping
- Public Workshops, Outreach and Interaction
- Development of Alternatives
- Utility Replacement Design
- Cost Estimation
- Project Phasing

# Community Engagement



Compromising balance of diverse interests & physical space



## Approach

- Municipal Staff
- Local Residents
- Local Businesses
- Visitors/Patrons

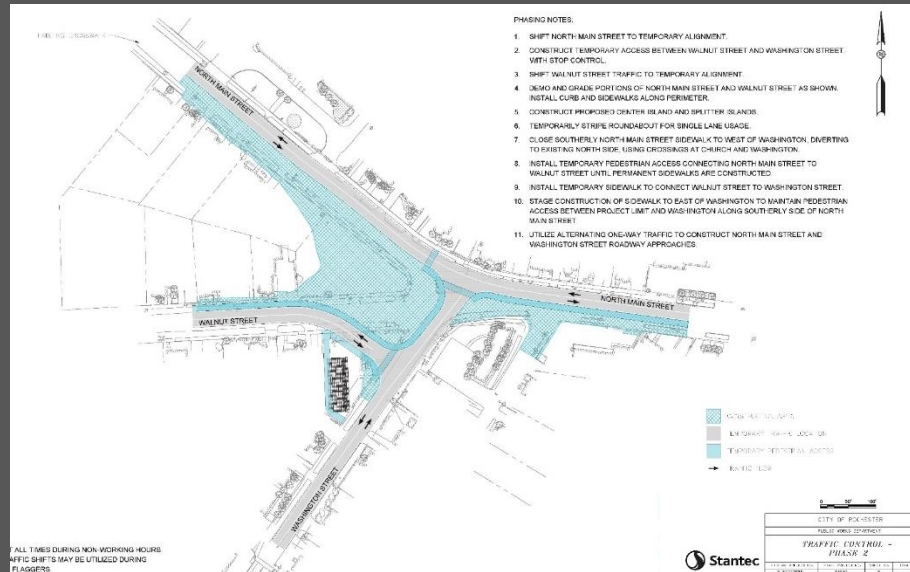
# Community Engagement - Workshops



- Interactive Exercises
- Chance to Talk with Project Team
- Compelling Visuals
- Breakout Groups



# Construction Phasing



- Phasing Limits
- Business Access
- Public Space & Events
- Schools
- Emergency Services
- Multimodal Accessibility

ALL TIMES DURING NON WORKING HOURS TRAFFIC SHIFTS MAY BE UTILIZED DURING FLAGGING

# 04 // Schedule



## RAILROAD SQUARE

### MAGICAL HISTORY TOUR • MURAL TOUR •

Take a stroll through our historic downtown

Keene welcomes you to take a stroll through our historic downtown to enjoy the Magical History Tour mural series featuring a fine of the interesting people, innovative products, and memorable events that shaped our city. The mural subjects were chosen by the community and painted by a couple hundred volunteer muralists known as the Walldogs. Before the digital age, specialized artists who went out into the field to paint large scale works on billboards and buildings were known as Walldogs. Today there is a vibrant group of artists dedicated to the art of old-fashioned mural painting, they too call themselves Walldogs. Each year they gather from around the globe to paint the history of a place as public art murals. In 2019, that town was Keene.

The Magical History Tour is the result of community coming together, collectively transforming a bit of our shared space to inspire the people that live, work and play here.



- #### WALLDOG MURAL LOCATIONS
- 1. The Keene Railroad Station - Location: North Main St. at 1st St. in Keene, NH
  - 2. The Keene Railroad Station - Location: North Main St. at 1st St. in Keene, NH
  - 3. The Keene Railroad Station - Location: North Main St. at 1st St. in Keene, NH
  - 4. The Keene Railroad Station - Location: North Main St. at 1st St. in Keene, NH
  - 5. The Keene Railroad Station - Location: North Main St. at 1st St. in Keene, NH
  - 6. The Keene Railroad Station - Location: North Main St. at 1st St. in Keene, NH
  - 7. The Keene Railroad Station - Location: North Main St. at 1st St. in Keene, NH
  - 8. The Keene Railroad Station - Location: North Main St. at 1st St. in Keene, NH
  - 9. The Keene Railroad Station - Location: North Main St. at 1st St. in Keene, NH
  - 10. The Keene Railroad Station - Location: North Main St. at 1st St. in Keene, NH
  - 11. The Keene Railroad Station - Location: North Main St. at 1st St. in Keene, NH
  - 12. The Keene Railroad Station - Location: North Main St. at 1st St. in Keene, NH
  - 13. The Keene Railroad Station - Location: North Main St. at 1st St. in Keene, NH
  - 14. The Keene Railroad Station - Location: North Main St. at 1st St. in Keene, NH
  - 15. The Keene Railroad Station - Location: North Main St. at 1st St. in Keene, NH
  - 16. The Keene Railroad Station - Location: North Main St. at 1st St. in Keene, NH
  - 17. The Keene Railroad Station - Location: North Main St. at 1st St. in Keene, NH
  - 18. The Keene Railroad Station - Location: North Main St. at 1st St. in Keene, NH
  - 19. The Keene Railroad Station - Location: North Main St. at 1st St. in Keene, NH
  - 20. The Keene Railroad Station - Location: North Main St. at 1st St. in Keene, NH

#### \* Made possible by our generous funders and the entire community

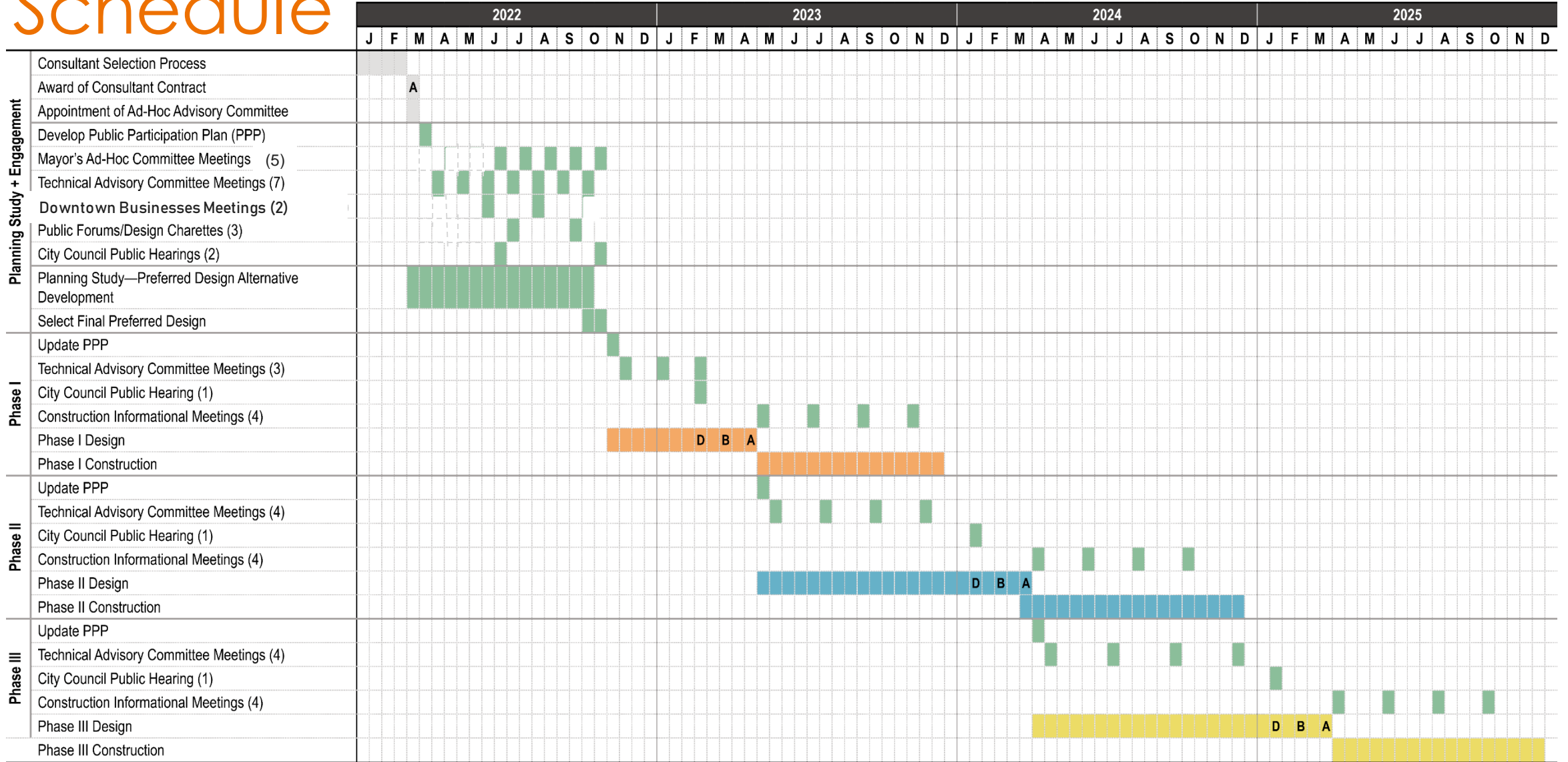
Keene State College  
The Keene Foundation  
The Keene Foundation  
Keene State College  
Keene State College  
Keene State College

Eppey-Jefferson Foundation, Inc.  
The Gilbert Venable Foundation  
Savings Bank of Keene  
C&I Wholesale Groceries  
Keene Sentinel

Benjamin Moore  
East Hill Farming Foundation  
The Kingsbury Fund  
Simpson-Daniels Committee  
Carl & Ruth Jacobs

D'Aleksi and Assoc.  
Morocco Bank  
Monsieur's Radio Group  
Dana's Books & More  
Tim City Brewery

# Schedule



Legend: A = Award | D = Design | B = Bid | █ = Consultant Selection Process | █ = Planning Study/Public Engagement | █ = Phase I Design/Construction | █ = Phase II Design/Construction | █ = Phase III Design/Construction

# Mayor's Steering Committee Interaction

- April 19, 2022
  - Project Kickoff
  - Outline of Steering Committee Schedule/Actions w/Mayor
- June 21, 2022
  - Introduction of Project Design Team
  - Review Goals, Opportunities, Project Work Plan, and Planning for Public Workshop #1 (6/29/2022)
- August 16, 2022
  - Review Results/Outcomes of Public Workshop #1
  - Review Existing Conditions, Goals Surveys, Issues and Concerns, Initial Project Findings
  - Planning for Public Workshop #2 (9/13/2022)
- September 20, 2022
  - Review Results/Outcomes of Public Workshop #2
  - Review and Discuss Alternatives
  - Review Utility Infrastructure Improvements, Right-of-Way, Permitting Requirements
- October 18, 2022
  - Final Alternative Review
  - Project Phasing/Implementation
  - Recommendations to City Council



# Issues, Opportunities and Concerns (Roundtable)