

KEENE DOWNTOWN INFRASTRUCTURE IMPROVEMENTS PROJECT

FINAL DESIGN REVIEW

MSFI PRESENTATION

DECEMBER 18, 2024

Seat Wall

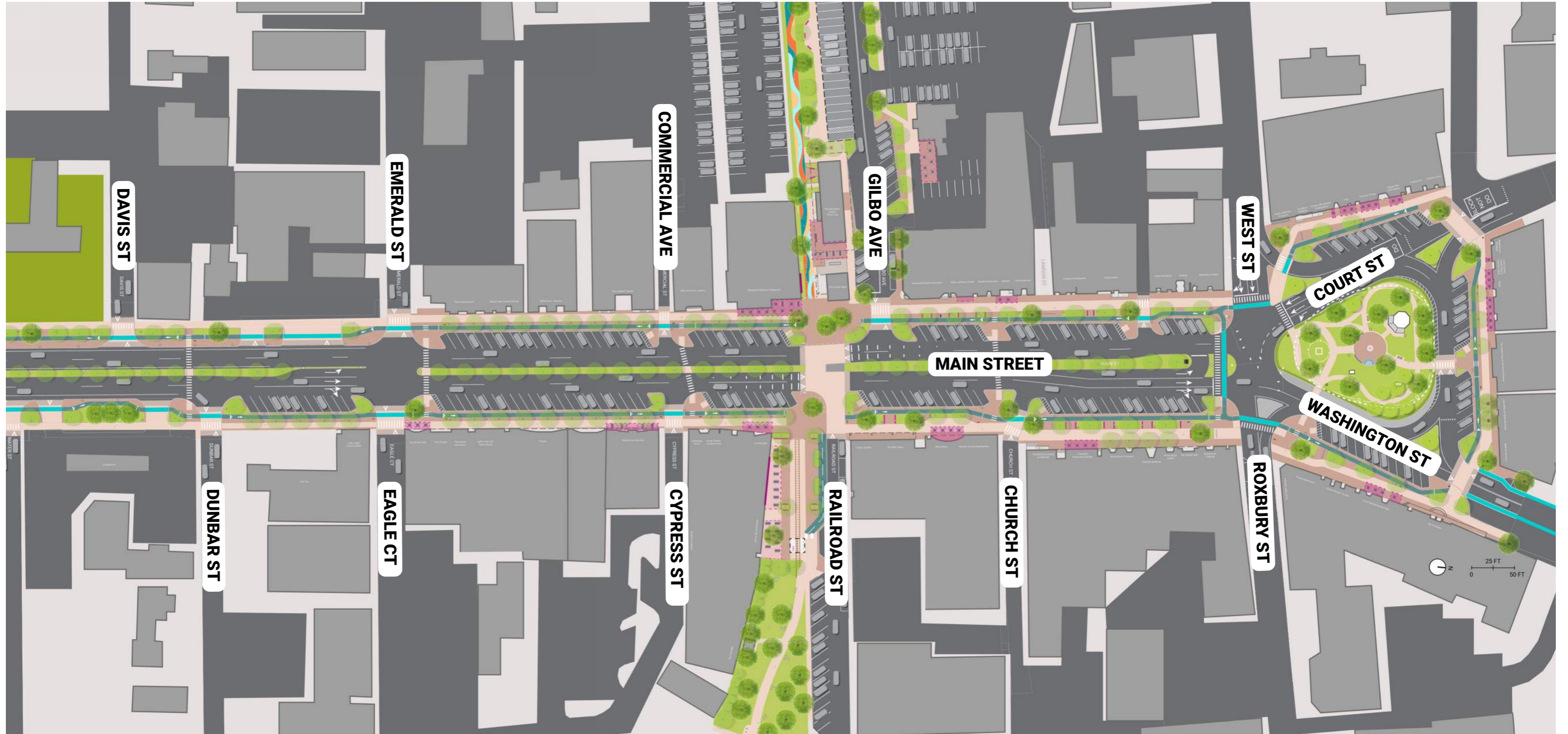
Bike Lane

Bike Rack

Public Art

Outdoor Café

KEENE FINAL DESIGN | MAIN STREET OVERALL SITE PLAN

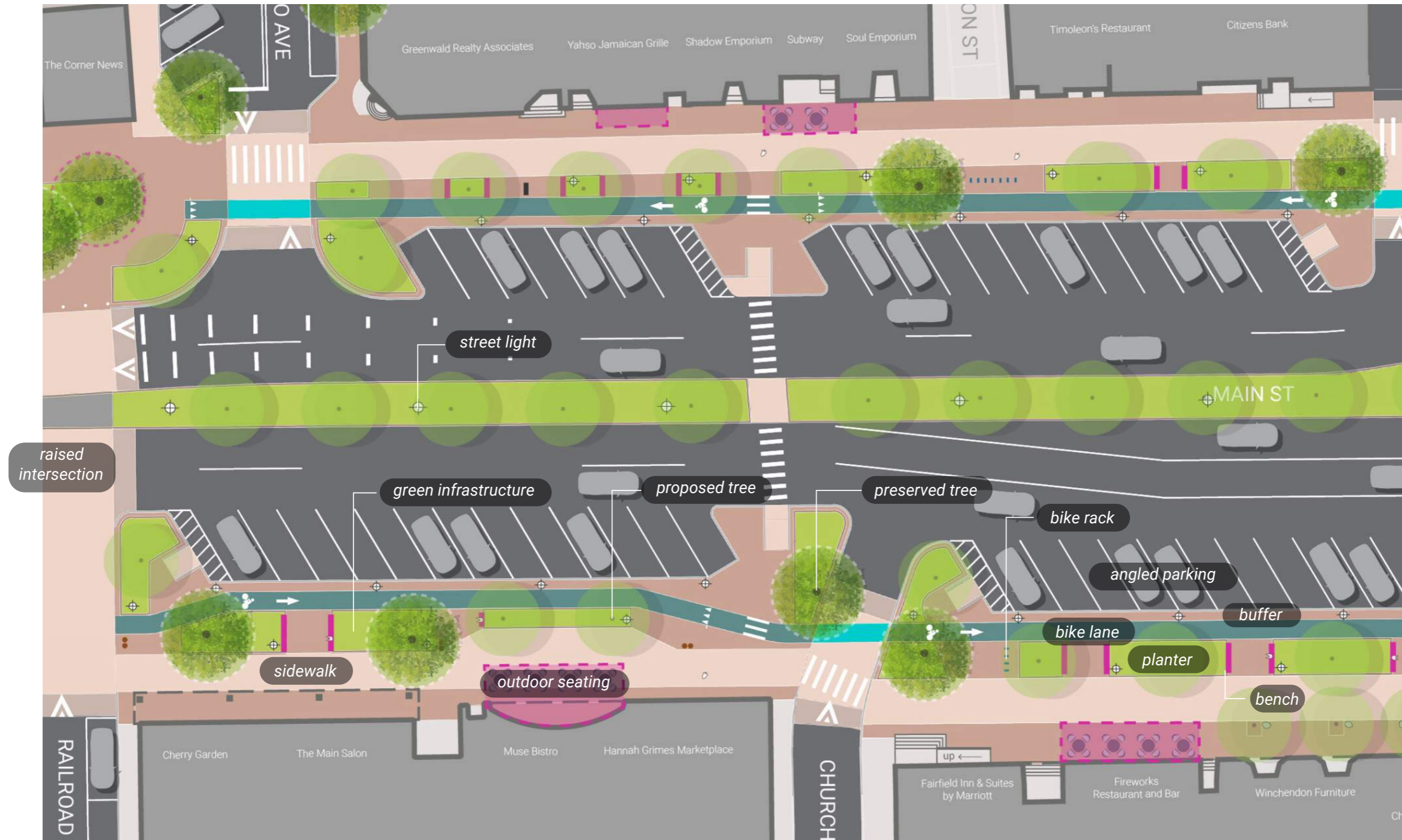


MAIN STREET



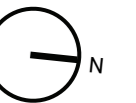
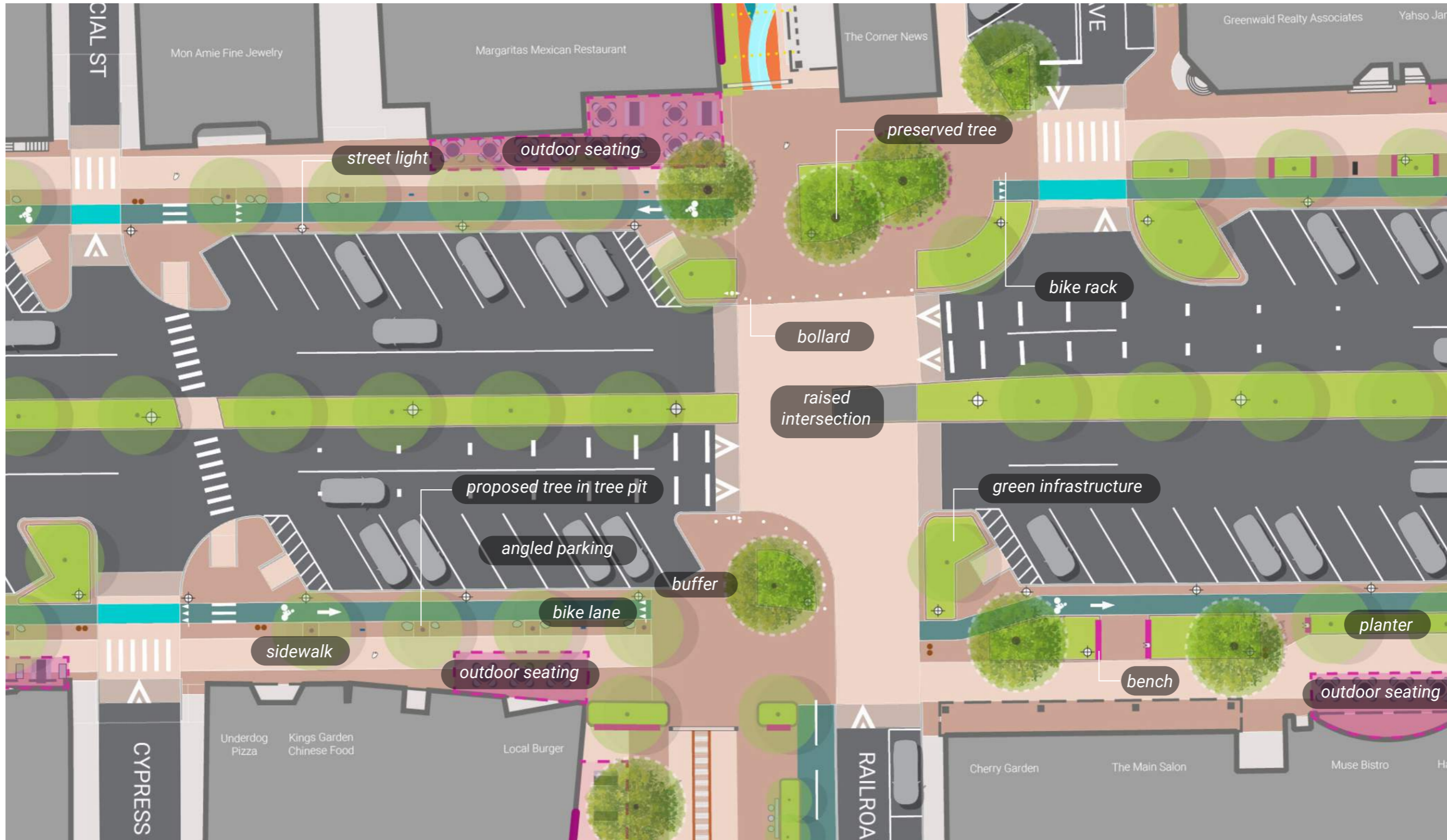
KEENE FINAL DESIGN | MAIN STREET STREETSCAPES

MAIN STREET ENLARGEMENT PLAN - RAILROAD ST TO CHURCH ST



KEENE FINAL DESIGN | MAIN STREET STREETSCAPES

MAIN STREET ENLARGEMENT PLAN - CYPRESS ST

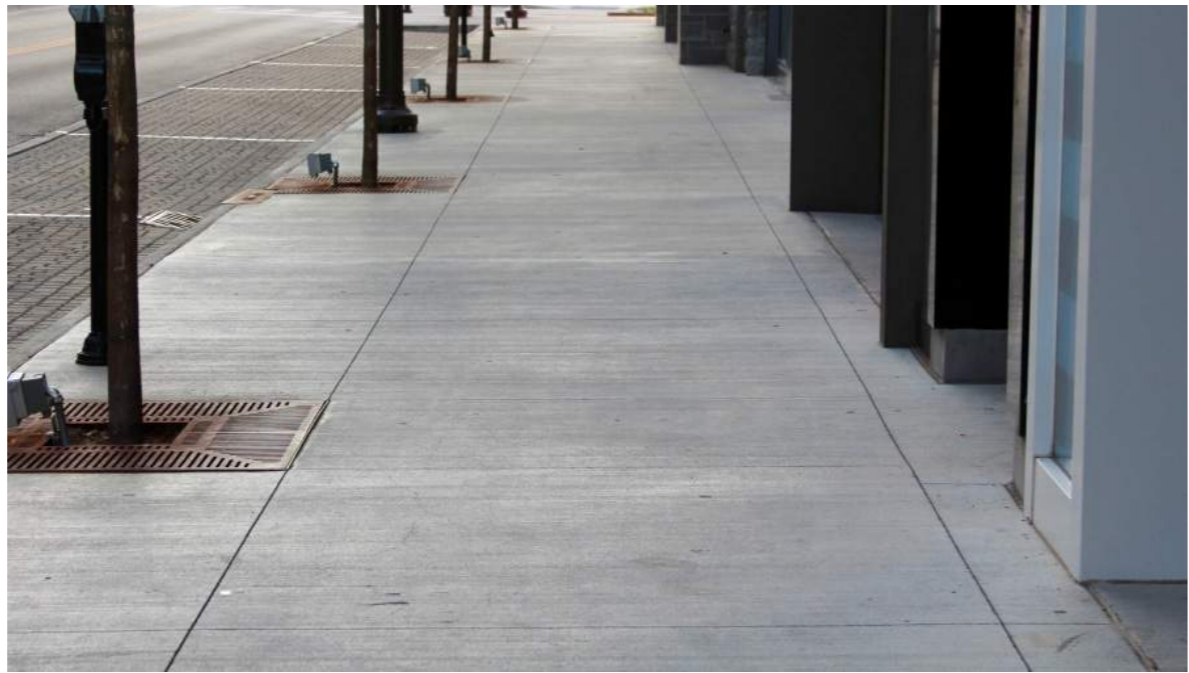


KEENE FINAL DESIGN | MAIN STREET STREETSCAPES
DECISION MATRIX

SIDEWALK	BIKE LANES	RAISED CROSSING	BIKE RACKS	TRASH/RECYCLE	HYDRANTS
<ul style="list-style-type: none"> Option 1 - Standard Concrete Option 2 - Standard and Stamped Concrete Combo 	<ul style="list-style-type: none"> Option 1 - Concrete Option 2 - Bituminous 	<ul style="list-style-type: none"> Option 1 - Concrete Option 2 - Bituminous Option 3- Unit Pavers 	<ul style="list-style-type: none"> Option 1 - U-Rack Option 2 - U-Rack with Signage 	<ul style="list-style-type: none"> Option 1 - Treetop Products Trash Cans Option 2 - Landscape Forms Poe Litter Option 3 - Big Belly 	<ul style="list-style-type: none"> Option 1 Option 2 Option 3
PLANTER CURBS	TREE WELLS	TRAFFIC SIGNAL BASE	POWER PEDESTALS	LIGHT BOLLARD	
<ul style="list-style-type: none"> Option 1 - Vertical Granite Option 2 - Vertical Granite with Railing 	<ul style="list-style-type: none"> Option 1 - Permeable Pavers Option 2 - Porous Resin Bound Paving 	<ul style="list-style-type: none"> Option 1 Option 2 	<ul style="list-style-type: none"> Option 1 Option 2 	<ul style="list-style-type: none"> Option 1 Option 2 Option 3 	

KEENE FINAL DESIGN | MAIN STREET STREETSCAPES **SURFACE TREATMENT**

STANDARD CONCRETE (BROOM FINISH AND/OR EXPOSED AGGREGATE)



KEENE FINAL DESIGN | MAIN STREET STREETSCAPES SURFACE TREATMENT

STANDARD AND STAMPED CONCRETE COMBINATION



KEENE FINAL DESIGN | MAIN STREET STREETSCAPES **SURFACE TREATMENT**

CONCRETE AND UNIT PAVER COMBINATION



SIDEWALK

- Option 1 - Standard Concrete
- Option 2 - Standard and Stamped Concrete Combo
- Option 3 - Standard Concrete and Unit Paver Combo



MSFI PREFERENCE

- Option 2 - Standard and Stamped Concrete Combo

KEENE FINAL DESIGN | MAIN STREET STREETSCAPES SURFACE TREATMENT

BIKE PATH

Option 1 - Concrete



Option 2 - Bituminous



BIKE LANES



Option 1 - Concrete

Option 2 - Bituminous



MSFI PREFERENCE

Option 1 - Concrete *with Integral Color - non-green color*

KEENE FINAL DESIGN | MAIN STREET STREETSCAPES

SURFACE TREATMENT

RAISED CROSSINGS

Option 1 - Concrete



Option 2 - Bituminous



Option 3 - Unit Pavers



RAISED CROSSINGS



Option 1 - Concrete



Option 2 - Bituminous

Option 3 - Unit Pavers



MSFI PREFERENCE

Bituminous for side streets

Concrete for Railroad /
Gilbo and Central Square

Crosswalk Marking :
Stamped bituminous /
concrete

KEENE FINAL DESIGN | MAIN STREET STREETSCAPES SITE FURNISHING

BIKE RACK



Bike Racks -
With or Without
City Logo

TRASH AND RECYCLING RECEPTACLE

Option 1



Option 3

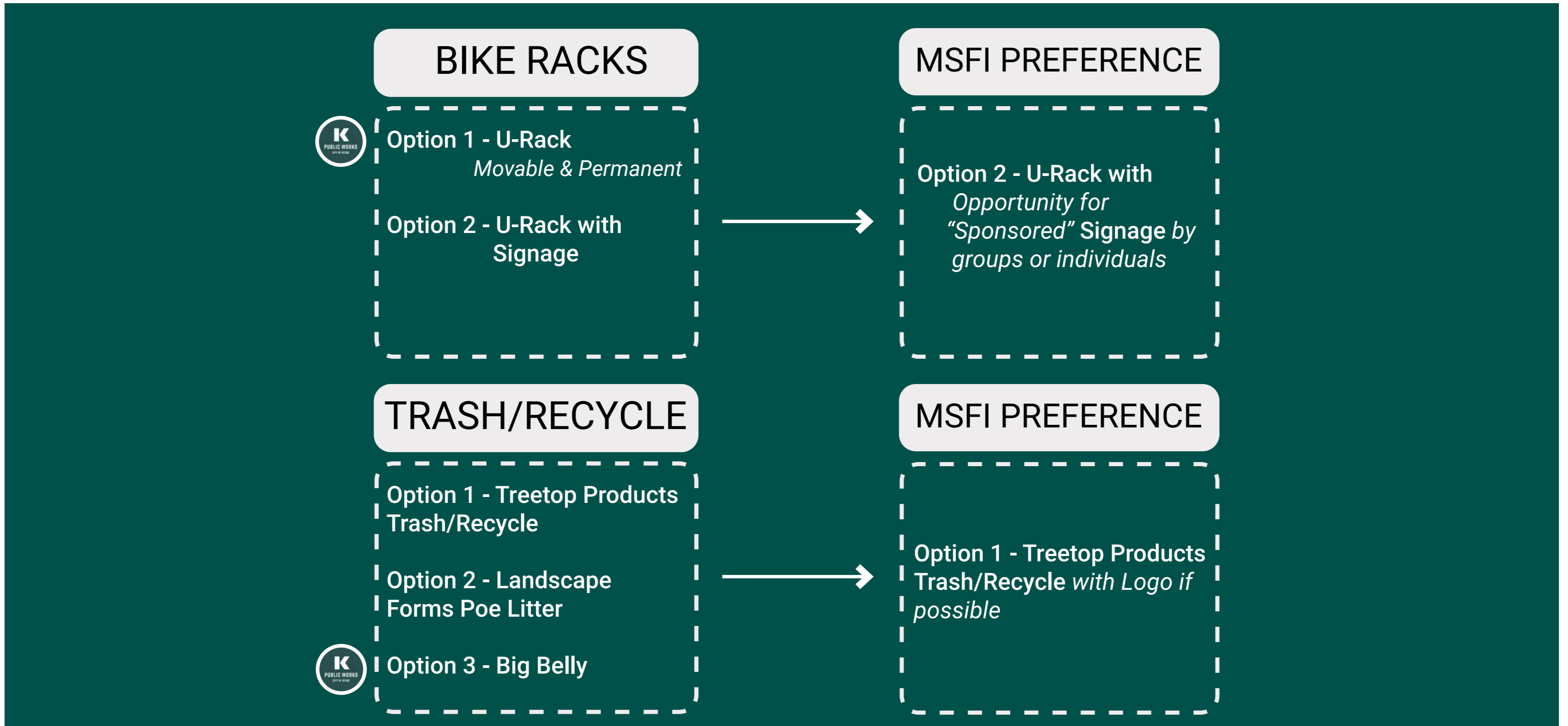


Option 2



Existing Dual Trash/Recycling





KEENE FINAL DESIGN | MAIN STREET STREETSCAPES
SITE FURNISHING

HYDRANT
Option 1



Option 2



Option 3



Option 4 (Existing)



HYDRANTS

Option 1 - All Red

Option 2 - Red and White

Option 3 - Yellow



Option 4 - Standard Hydrant
painted Black and blue
Bonnet



MSFI PREFERENCE

Option 4 - Standard Hydrant
painted Black with colored
Bonnet

KEENE FINAL DESIGN | MAIN STREET STREETSCAPES **PLANTING**

PLANTER CURBS

Existing - Planting Bed with Trees



Option 1 - Vertical Granite Curb



Option 2 - Vertical Granite Curb with Railing



PLANTER CURBBS

Option 1 - Vertical Granite

Option 2 - Vertical Granite
with Railing



MSFI PREFERENCE

Option 1 - Vertical Granite

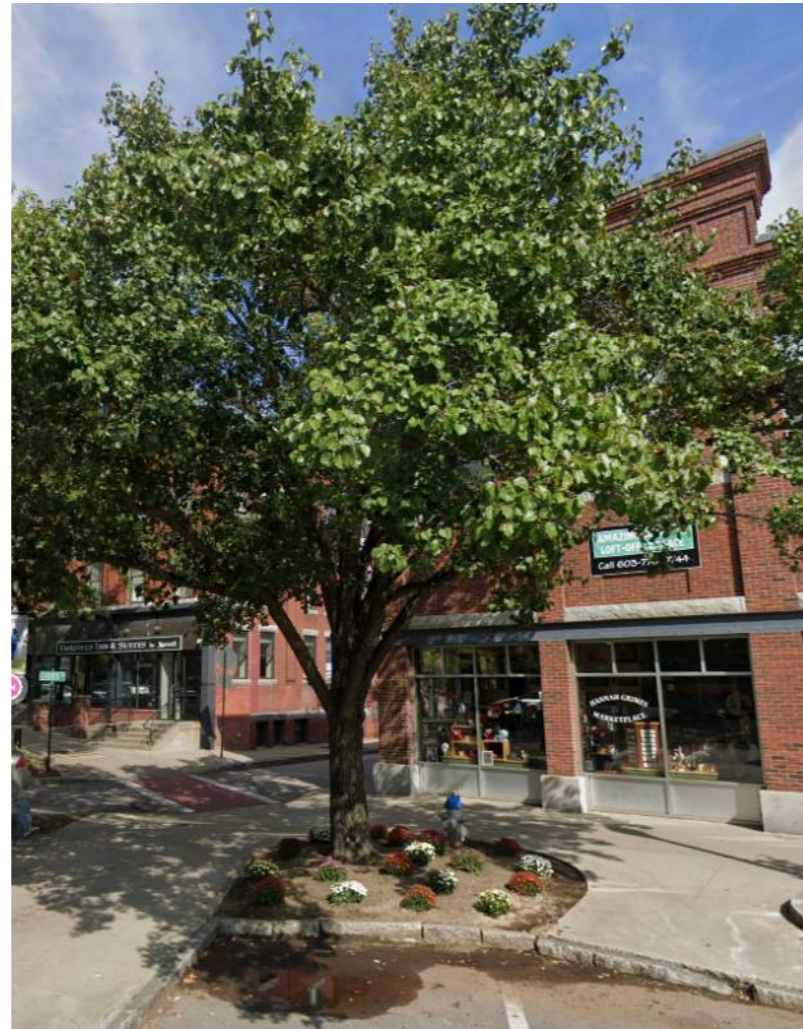
KEENE FINAL DESIGN | MAIN STREET STREETSCAPES **PLANTING**

TREE WELLS

Existing - Tree Grate



Existing - Mulch / Planted Bed



Option 1 - Permeable Pavers System



Option 2 - Porous Resin Bound Paving



TREE WELLS

Option 1 - Permeable
Pavers

Option 2 - Porous Resin
Bound Paving



Match Existing Tree Grates

Match Existing Open
Plant Beds



MSFI PREFERENCE

Cast-Iron Grates

KEENE FINAL DESIGN | MAIN STREET STREETSCAPES

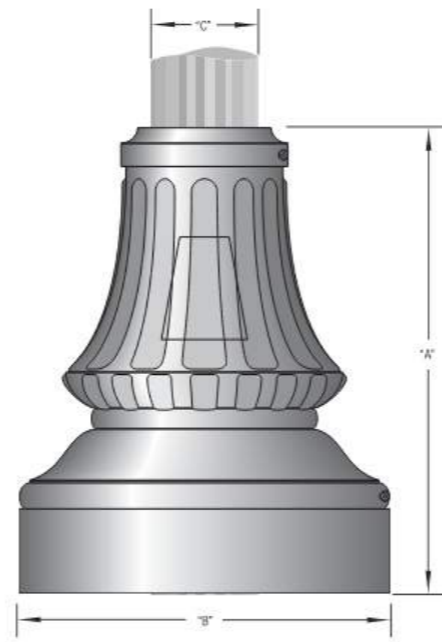
SITE FURNISHING

Ornamental Traffic Signal Base



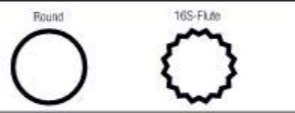
Option 1

WASHINGTON (BWNR)

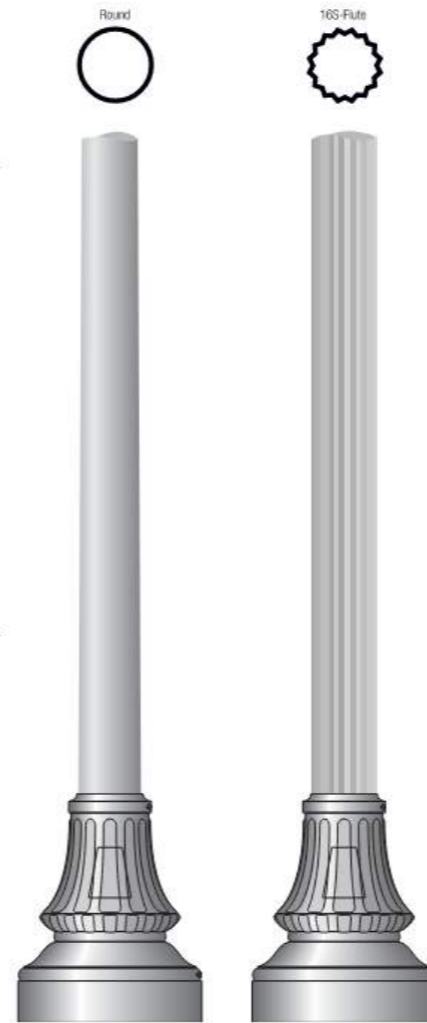


PART NUMBER	"A" (ft)	"B" (ft)	"C" (ft)
BWNR1512	15	12	3-4
BWNR2018	20.25	18	4-6
BWNR3725	37	25	6.5-9
BWNR4030	40	30.5	9.5-13
BWNR4336	43	36	13.5-18

CROSS SECTION SUGGESTIONS*

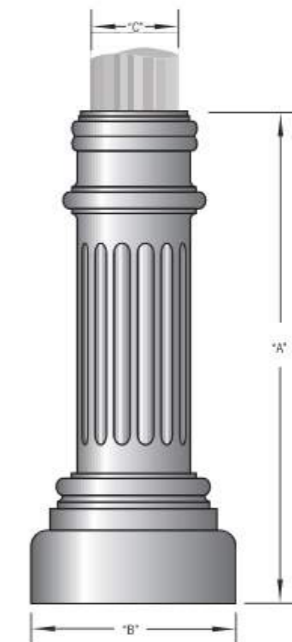


*Pole illustrations are examples only. Multiple cross section options are available.



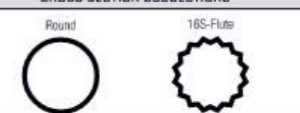
Option 2

RALEIGH (BRHF)

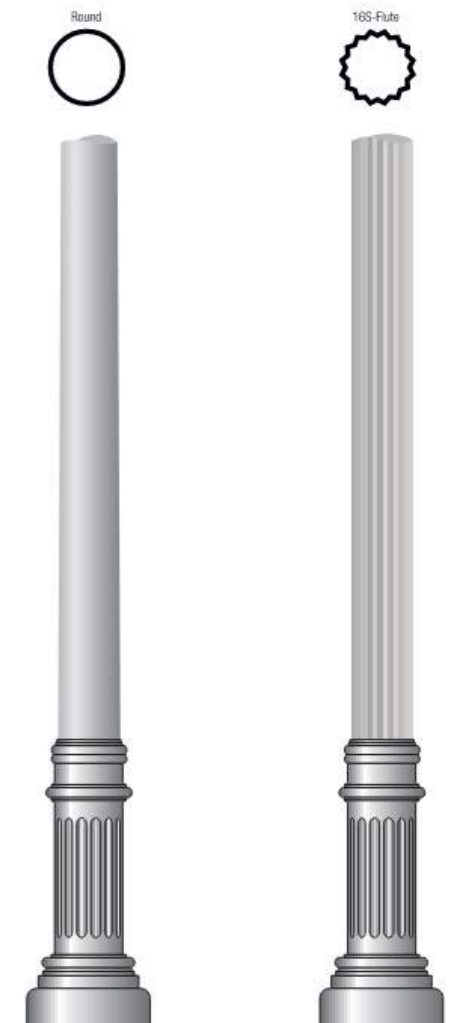


PART NUMBER	"A" (ft)	"B" (ft)	"C" (ft)
BRHF2410	24	10	4
BRHF3015	30	15	4-6
BRHF4519	45	19	6-8.5
BRHF5127	51.125	27	9-13
BRHF5134	51	34.5	13-17.5

CROSS SECTION SUGGESTIONS*



*Pole illustrations are examples only. Multiple cross section options are available.



TRAFFIC SIGNAL BASE

Option 1 - Washington Base

Option 2 - Raleigh Base



MSFI PREFERENCE

Option 1 - Washington
Base *with fluted poles*

KEENE FINAL DESIGN | MAIN STREET STREETSCAPES SITE FURNISHING

LIGHTING Pole Lights and Power Pedestal



Option 1

Option 2



Bollard Light Option 1



Option 2

Option 3



POWER PEDESTALS

- Option 1 - 20A duplex / quad GFCI
- Option 2 - 3 Styles of Outlet



MSFI PREFERENCE

- Option 2 - 3 Styles of Outlet, *no need for USB/C outlets*

LIGHT BOLLARD

- Option 1 - BEGA Light
- Option 2 - US Architectural Lighting B100
- Option 3 - US Architectural Lighting B1300



MSFI PREFERENCE

- Option 2 - US Architectural Lighting B100

KEENE FINAL DESIGN | MAIN STREET STREETSCAPES
DECISION MATRIX SUMMARY

<p>SIDEWALK</p> <p>Option 1 - Standard Concrete</p> <p>Option 2 - Standard and Stamped Concrete Combo</p>	<p>BIKE LANES</p> <p>Option 1 - Concrete</p> <p>Option 2 - Bituminous</p>	<p>RAISED CROSSING</p> <p>Option 1 - Concrete</p> <p>Option 2 - Bituminous</p> <p>Option 3- Unit Pavers</p>	<p>BIKE RACKS</p> <p>Option 1 - U-Rack</p> <p>Option 2 - U-Rack with Signage</p>	<p>TRASH/RECYCLE</p> <p>Option 1 - Treetop Products Trash Cans</p> <p>Option 2 - Landscape Forms Poe Litter</p>	<p>HYDRANTS</p> <p>Option 1</p> <p>Option 2</p> <p>Option 3</p>
<p>PLANTER CURBS</p> <p>Option 1 - Vertical Granite</p> <p>Option 2 - Vertical Granite with Railing</p>	<p>TREE WELLS</p> <p>Option 1 - Permeable Pavers</p> <p>Option 2 - Porous Resin Bound Paving</p>	<p>TRAFFIC SIGNAL BASE</p> <p>Option 1</p> <p>Option 2</p>	<p>POWER PEDESTALS</p> <p>Option 1</p> <p>Option 2</p>	<p>LIGHT BOLLARD</p> <p>Option 1</p> <p>Option 2</p> <p>Option 3</p>	

GILBO AVE / RAILROAD ST



KEENE FINAL DESIGN | GILBO AVE SITE PLAN



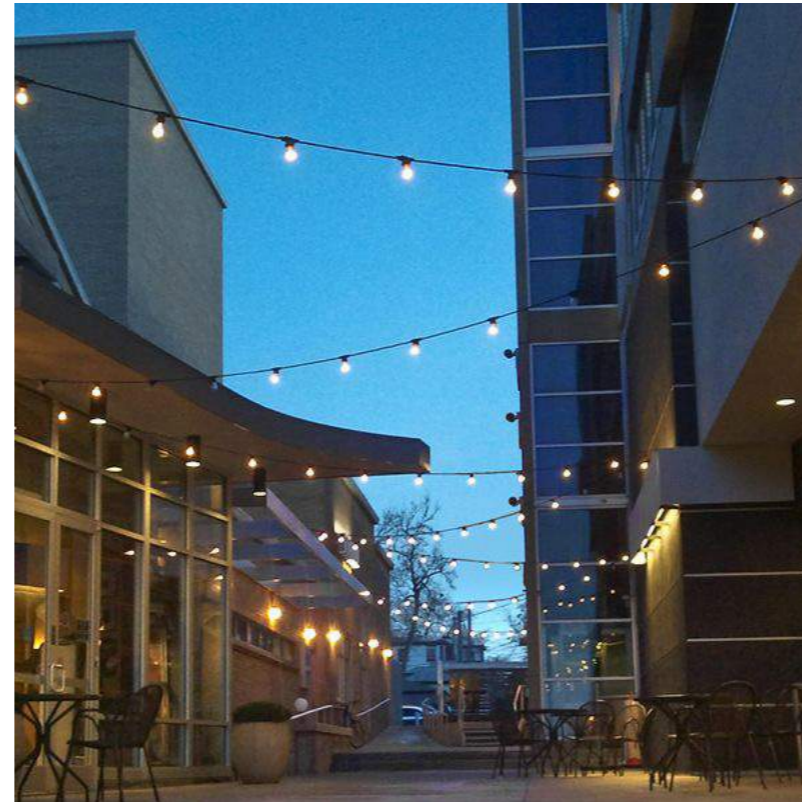
KEENE FINAL DESIGN | GILBO AVE STREETSCAPES

SITE FURNISHING

LIGHTING

Catenary Light Fixture - Option 1

ML2000-CA | Canopy A



Catenary Light Fixture - Option 2

ML2000-CCCA | Canopy C with Cage



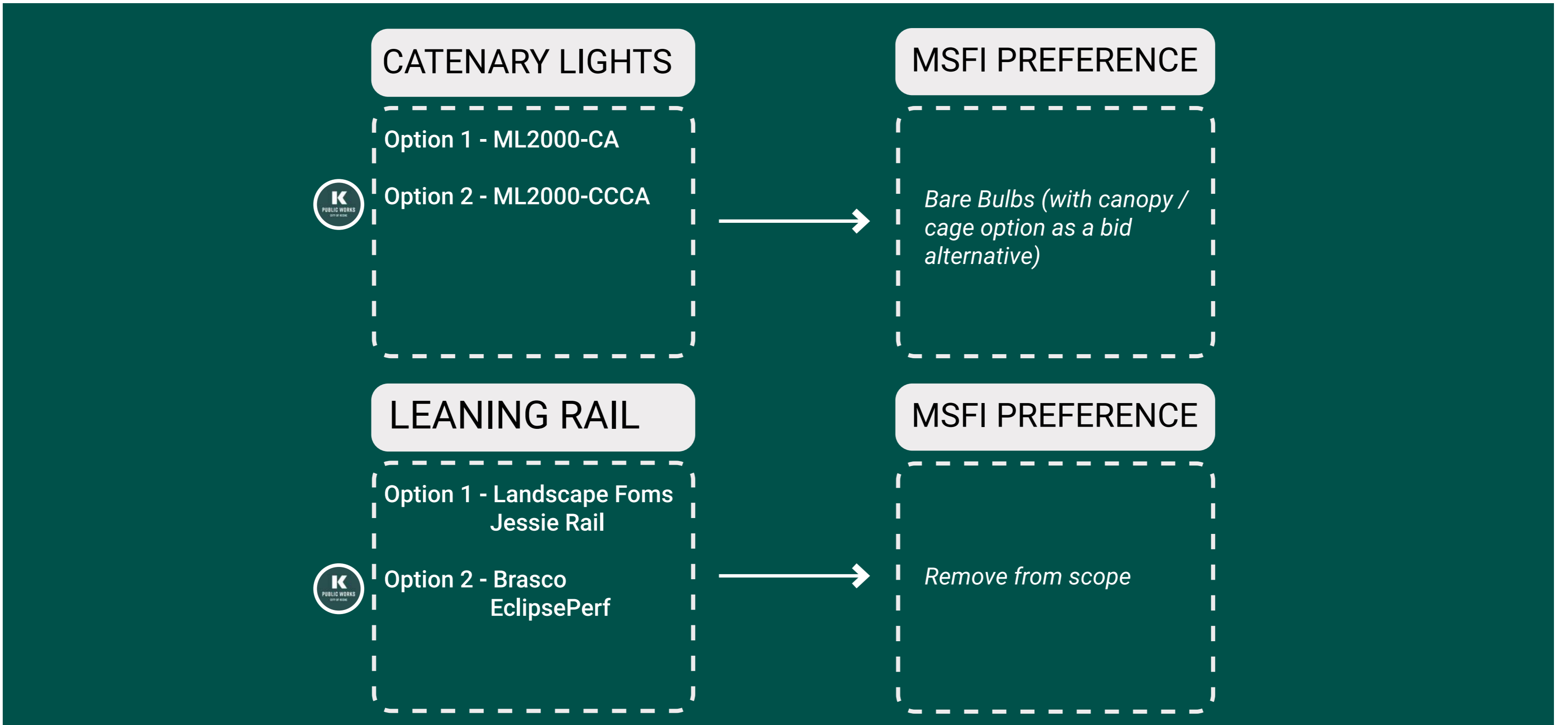
LEANING RAIL

Option 1



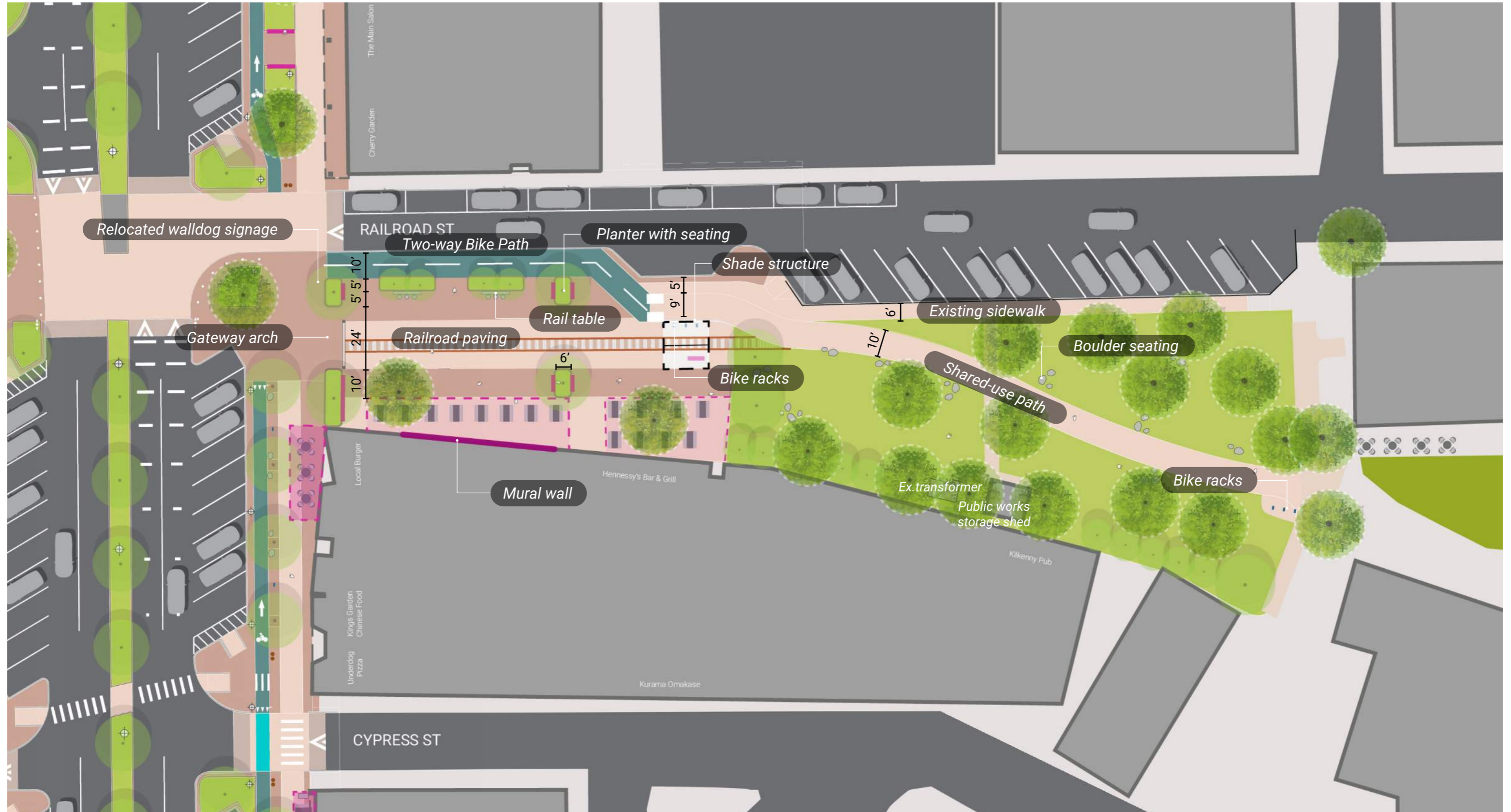
Option 2





KEENE FINAL DESIGN | RAILROAD SQUARE

CURRENT PLAN



KEENE FINAL DESIGN | RAILROAD SQUARE
SURFACE TREATMENT

STANDARD CONCRETE (BROOM FINISH AND/OR EXPOSED AGGREGATE)



KEENE FINAL DESIGN | RAILROAD SQUARE **SURFACE TREATMENT**

STANDARD AND STAMPED CONCRETE COMBINATION



KEENE FINAL DESIGN | RAILROAD SQUARE SURFACE TREATMENT

UNIT PAVERS



KEENE FINAL DESIGN | RAILROAD SQUARE SURFACE TREATMENT

RAILROAD TRACK MATERIAL

Option 1



Option 2

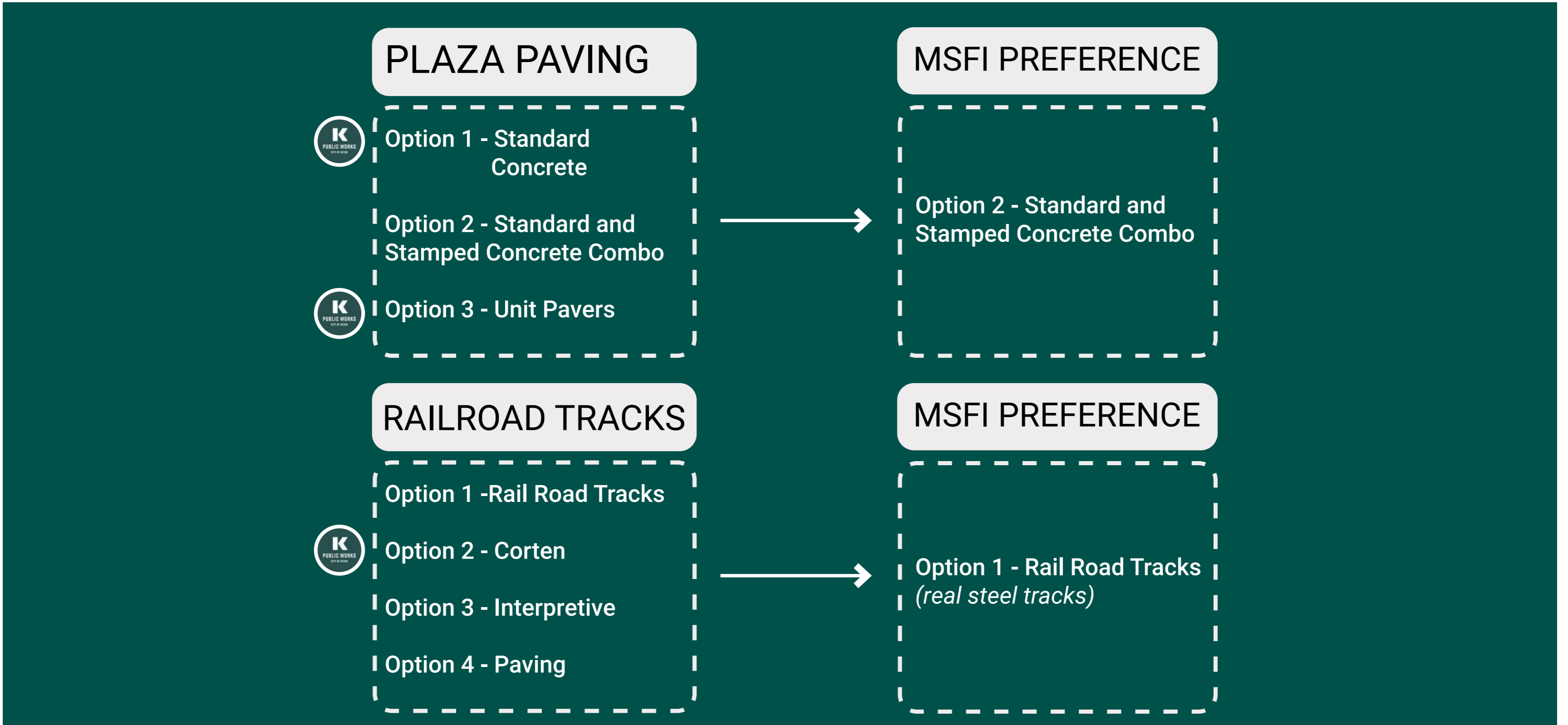


Option 3



Option 4





KEENE FINAL DESIGN | RAILROAD SQUARE GATEWAY ARCH

Option 1 - Single Post with Brick Base



Option 2 - Double Post with Brick Base



Option 1a - Single Post with Granite Base



Keene State College



Ashuelot River Park

GATEWAY ARCH



Option 1 - Single Post with Brick Base

Option 1a - Single Post with Granite Base



Option 2 - Double Post with Brick Base



MSFI PREFERENCE

Option 1 - Single Post with Brick Base, *consider metal arch with metal text like examples*

KEENE FINAL DESIGN | RAILROAD SQUARE **COVERED STRUCTURE**

Option 1



Option 2



Option 3



COVERED STRUCTURE



Option 1 - Semi-Open Structure with Color



Option 2 - Structure with Louver System

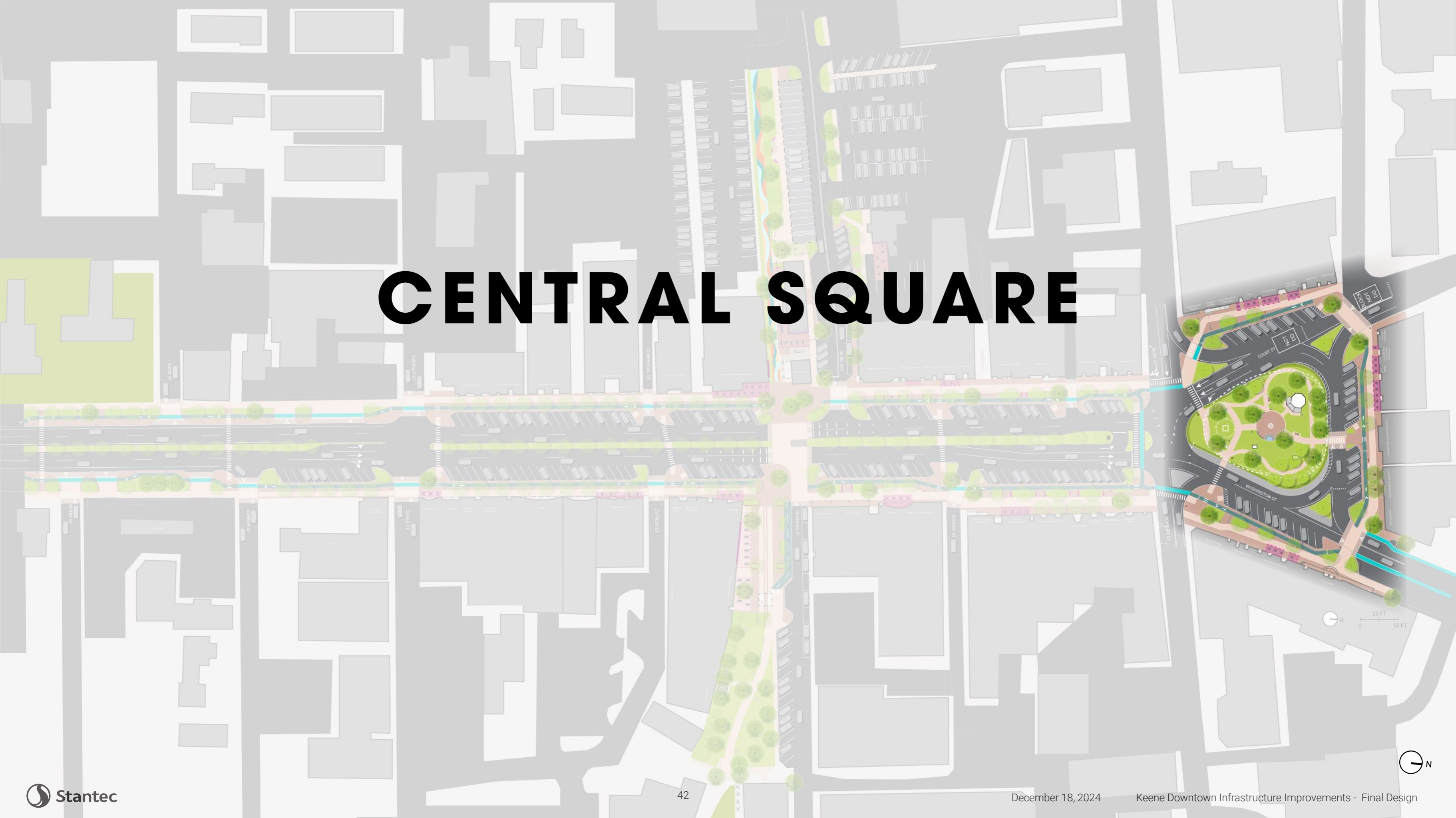
Option 3 - Covered Structure



MSFI PREFERENCE

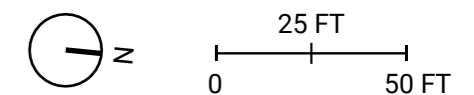
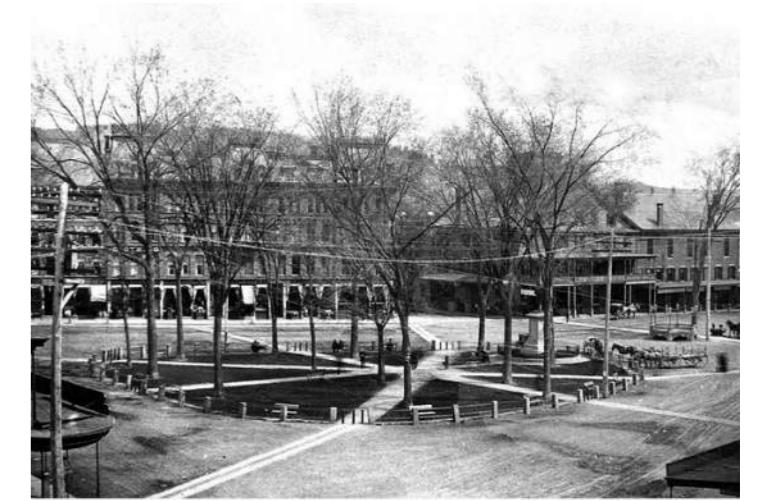
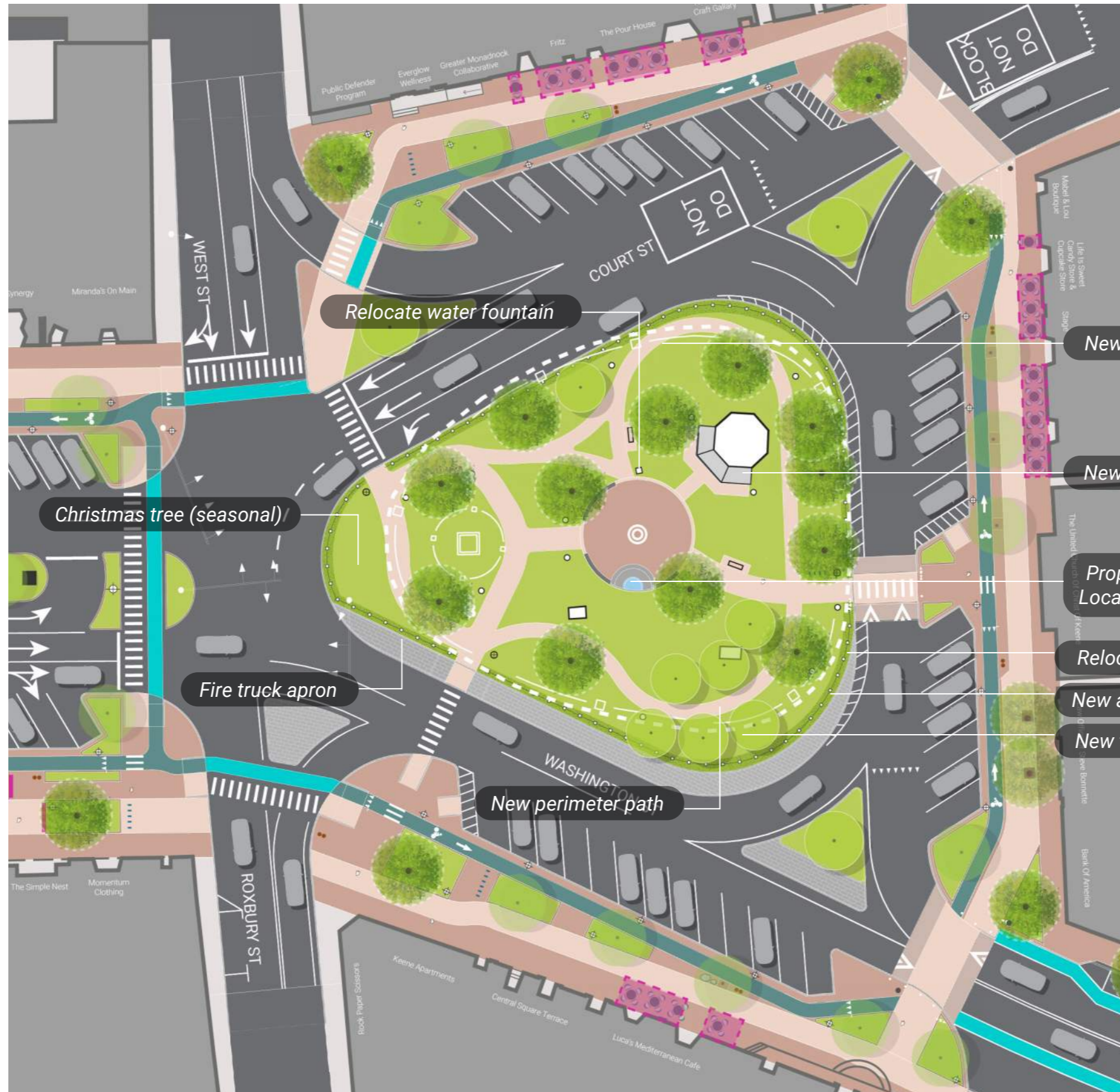
Option 3 - Covered Structure *(with mix of gathering space and bicycle parking)*

CENTRAL SQUARE



KEENE FINAL DESIGN | CENTRAL SQUARE COMMON

SITE PLAN



KEENE FINAL DESIGN | CENTRAL SQUARE
SURFACE TREATMENT

STANDARD CONCRETE (BROOM FINISH AND/OR EXPOSED AGGREGATE)



STONE DUST



UNIT PAVING FOR FOUNTAIN AREA



SURFACE TREATMENT



Standard Concrete

Stone Dust



Unit Paving



MSFI PREFERENCE

Concrete with Unit Pavers in center

KEENE FINAL DESIGN | CENTRAL SQUARE

SITE FURNISHING

BENCH SEATING

Option 1



Option 2



Option 3



Option 4



BENCH SEATING

- Option 1 - Metal Bench
- Option 2 - Wood Slat Bench
- Option 3 - Wood Slat
Backless Bench
- Option 4 - Stone Blocks

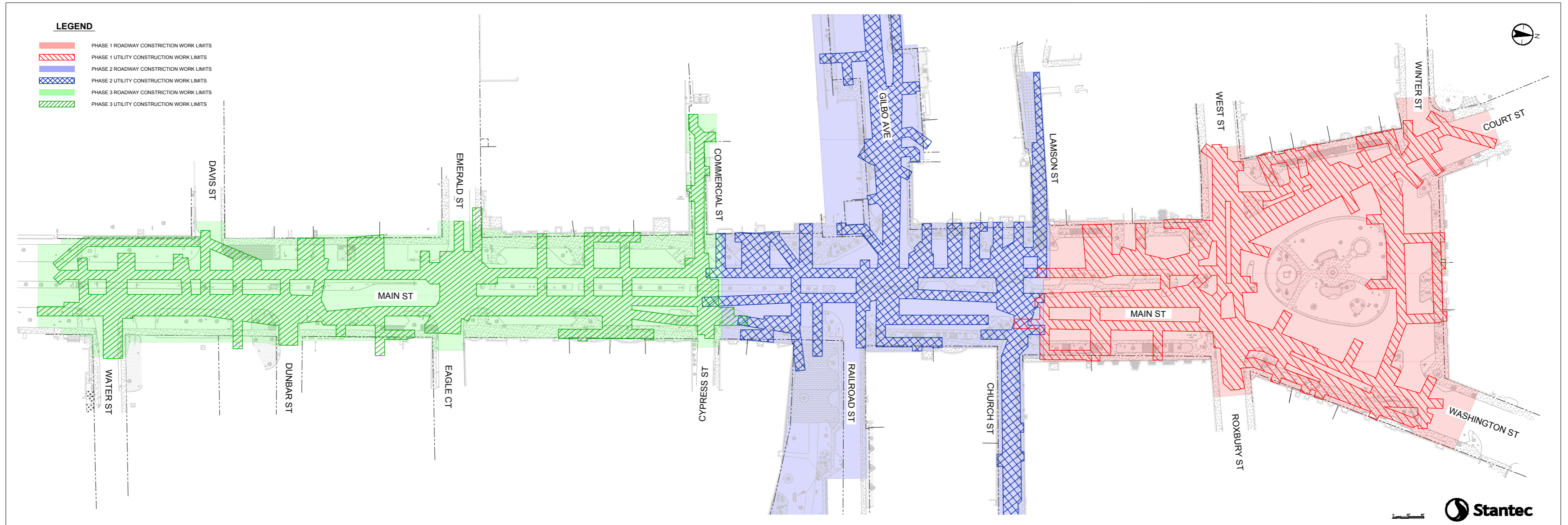


MSFI PREFERENCE

*Combination of backless
and backed wood benches*

KEENE FINAL DESIGN | CENTRAL SQUARE

CONSTRUCTION PHASING OVERALL



Parking

- Alternate Locations
- Limitation Inaccessible spots to 25 per stage

Sidewalks

- Staged Construction
- Temporary Ramps and “Bridges”
- Access Requirements
- Clear Signage

Building Access

- Contractor Requirement
- Advanced Notifications and Communications
- ADA
- Utility Services

Noise, Dust, Vibrations

- Monitoring
- Contract and Bid Items

Construction Contract

- Clear and Enforceable Guidelines
- Incentive/Disincentives Clauses
- Bid Items
- Detailed Hours of Operations and Limitations
- Traffic Management Parameters
- Contractor Submittal Requirements

Seasonal

- April 1 to December 1 (approximate)
- Limited Winter Activities
- Temperature Restrictions – Pavement, Compaction, Concrete

Hours

- 7 AM to 5 PM, Monday to Friday
- Saturdays and Overnight with permission

Holidays and City Activities

- Shut down noon prior
- Adjustments to Community Events

Project Ombudsman

- Liaison between businesses and Construction Team
- Attend construction meetings, updates and meet with business groups
- 20-25 hours per week

Monthly MSFI Updates

- PW Representative and Ombudsman

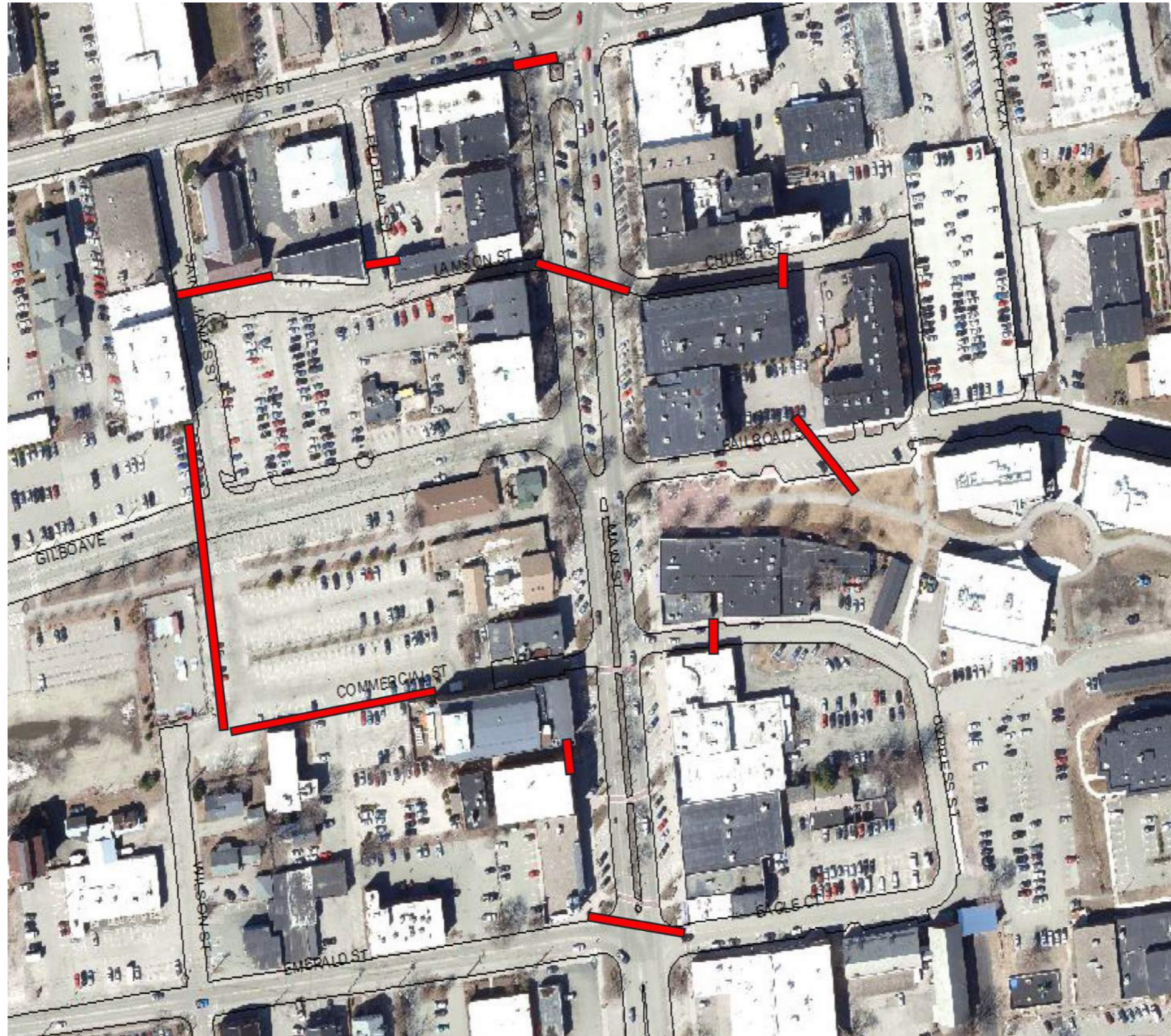
Monthly Coffee & Hardhats

- Informal meetings
- Alternating with MSFI
- Project Updates and opportunity to voice concerns

Alternative Event planning

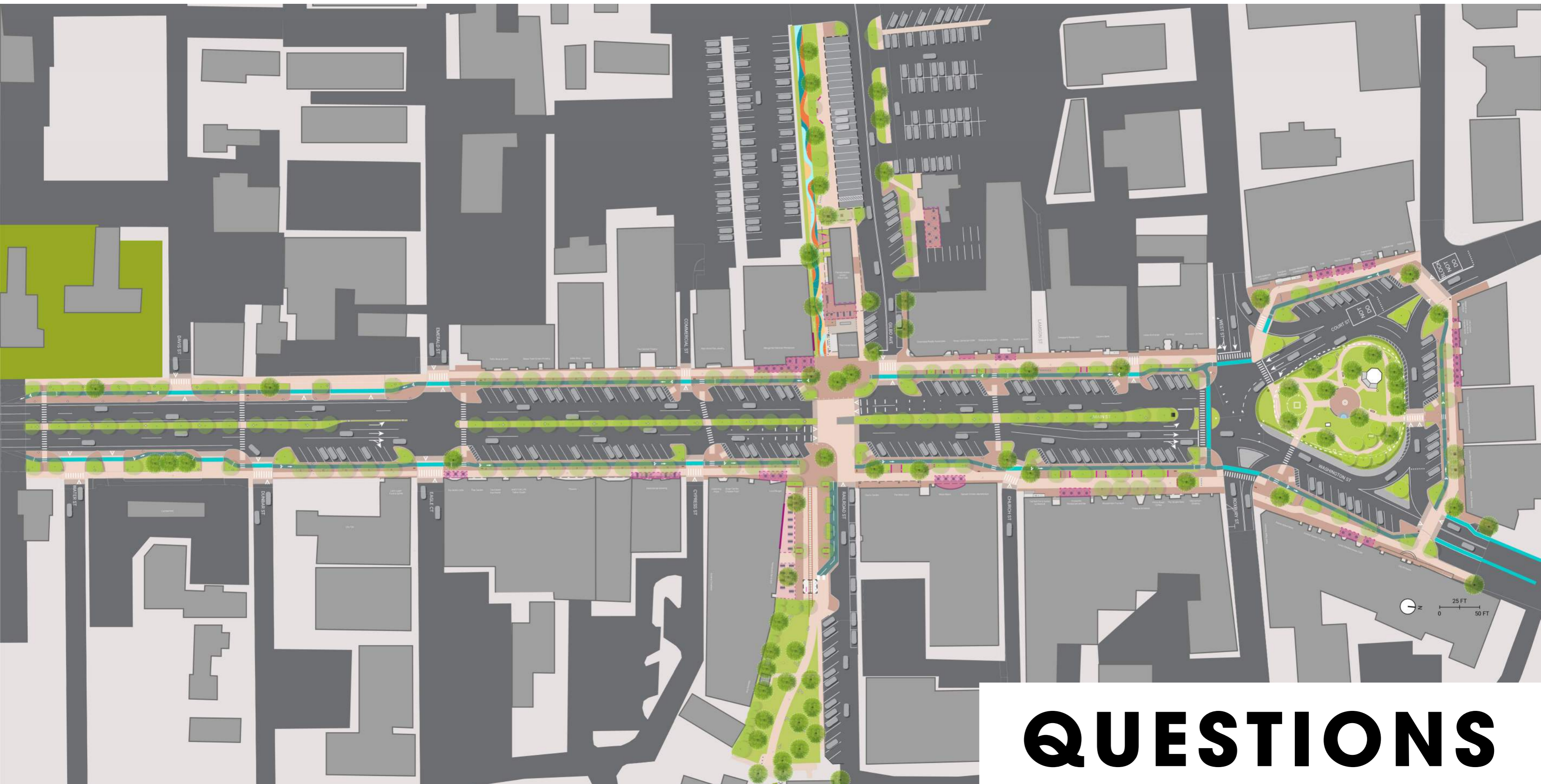
- All Community Events can be accommodated on Railroad Square / Gilbo Ave

KEENE FINAL DESIGN | MAIN STREET BUSINESS SUPPORT AND COMMUNICATIONS



Project Communications

- Formal notice (i.e., letters) to property owners as needed
- Direct notification (e.g., door hangars) for planned utility outages
- Social and Broadcast Media used for disruptions and traffic changes
- Weekly project update via e-mail and/or text
- Use of VMB's for advanced notice of traffic changes & events
- Project Webpage for periodic general updates
- TENT: Push notification using NH DOS notification system



QUESTIONS