

# Keene Heritage Commission

Keene, New Hampshire



Preservation Resources Guide

*Created to inform property owners of alternatives  
to the demolition of their historic structure*



The Keene Public Library, originally the Henry Colony house built in 1869, given to the City of Keene by Edward C. Thayer in 1898.

*"It would be worthwhile if in  
each town there were a committee  
appointed to see that the beauty of  
the town receive no detriment."*

Henry David Thoreau



## Keene Heritage Commission

Information is available  
on the City of Keene website:

[www.ci.keene.nh.us/heritage-commission](http://www.ci.keene.nh.us/heritage-commission)

or by contacting the Planning Department  
at 3 Washington Street, Keene, NH 03431

Telephone: 603.352.5474

A map of the Historic District is available  
at the City's website or by contacting the  
Keene Planning Department (603.352.5474)  
or the Keene Code Enforcement  
Department (603.352.5440).

## Preserving Our Heritage

In 2003, the National Trust for  
Historic Preservation:

... named Keene to "America's  
Dozen Destinations" because of its  
commitment to historic preserva-  
tion and attractive architecture.

... called Keene a "Currier and  
Ives comes to life . . . where pris-  
tine local landmarks, Revolutionary  
War reenactments, and bucolic  
rolling hills provide a perfect spot  
for family fun."

... wrote, "Although its popula-  
tion is small, Keene is a giant  
when it comes to history . . . and  
... because so many of the town's  
earliest structures have remained  
unchanged for more than two cen-  
turies, it's easy to get lost in time.  
Keene represents a truly distinctive  
slice of America. That makes it an  
exciting alternative to the homoge-  
nization of many other vacation  
spots."

In 2005, the Advisory Council on  
Historic Preservation, a White  
House initiative, named Keene a  
Preserve America Community, the  
first in the state to be so designated.

## Why Preservation?

“We are what we save from the past, and build for the future.”

*Philip H. Faulkner, Jr.*

The Keene Heritage Commission was created to protect and preserve all resources in Keene that are valued for their historic, cultural, aesthetic, archaeological, and community significance.

There are many benefits to preserving and revitalizing or reusing a structure when

compared to demolition. Even if the property has been unused for some time, restoration is often a viable solution. Demolition of such a structure may represent the loss of a piece of unique history that contributes to our community's heritage and identity.

The most important incentive for restoration is that demolition is irreversible. Even if demolition is the chosen route, there still might be an opportunity to recover and retain any historic features of the property. Please consider contacting the Heritage Commission or the professionals listed for assistance with your project.

## Local Preservation Resources

*[www.ironwd.com](http://www.ironwd.com)  
603-446-3669*

*Ironwood Restoration, LLC - Marlow, NH*

*[www.bedardpreservation.com](http://www.bedardpreservation.com)  
603-524-1773*

*Bedard Preservation - Gilmanston, NH*

*603-783-3345*

*Fifield Building Restoration - Canterbury, NH*

*[www.historicprop.com](http://www.historicprop.com)  
603-654-8970*

*Historic & Distinctive Properties - Wilton, NH*

*603-547-6840*

*Historic Sash & Windows - Francestown, NH*

*603-585-2260*

*Kerry P. Gagne Restoration - Fitzwilliam, NH*

*[www.aianh.org](http://www.aianh.org)  
603-357-2863*

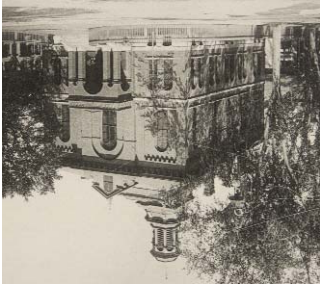
*American Institute of Architects NH - Keene, NH*

## Financial & Technical Assistance

*NH Preservation Alliance - A non-profit organization providing technical assistance to property owners. They also keep a Directory of Preservation Products and Services.  
[www.nhpreservation.org](http://www.nhpreservation.org)  
603-224-2281*

The Heritage Commission works closely with Keene's Historic District Commission by researching historic homes and buildings and by recommending areas for historic preservation.

At right, Cheshire County Court House circa 1858.



At left, Cheshire County Court House today



All structures represent embodied energy, or the sum of all the energy required to extract, process, manufacture, deliver, and install the materials needed to construct a building. The historic built environment represents a huge resource that can be conserved and made efficient for twenty-first century energy challenges - when adaptive reuse isn't an option, please consider recycling.

## Commissions Work Together

