

2nd Cong. Church

Vernon St.

Parsonage

See Page 5.

J. G. Warren.

A. S. Carpenter

Baptist Church

E. Clark.

5

5

Balls Block.

1st Cong. Church

Clarks Block.

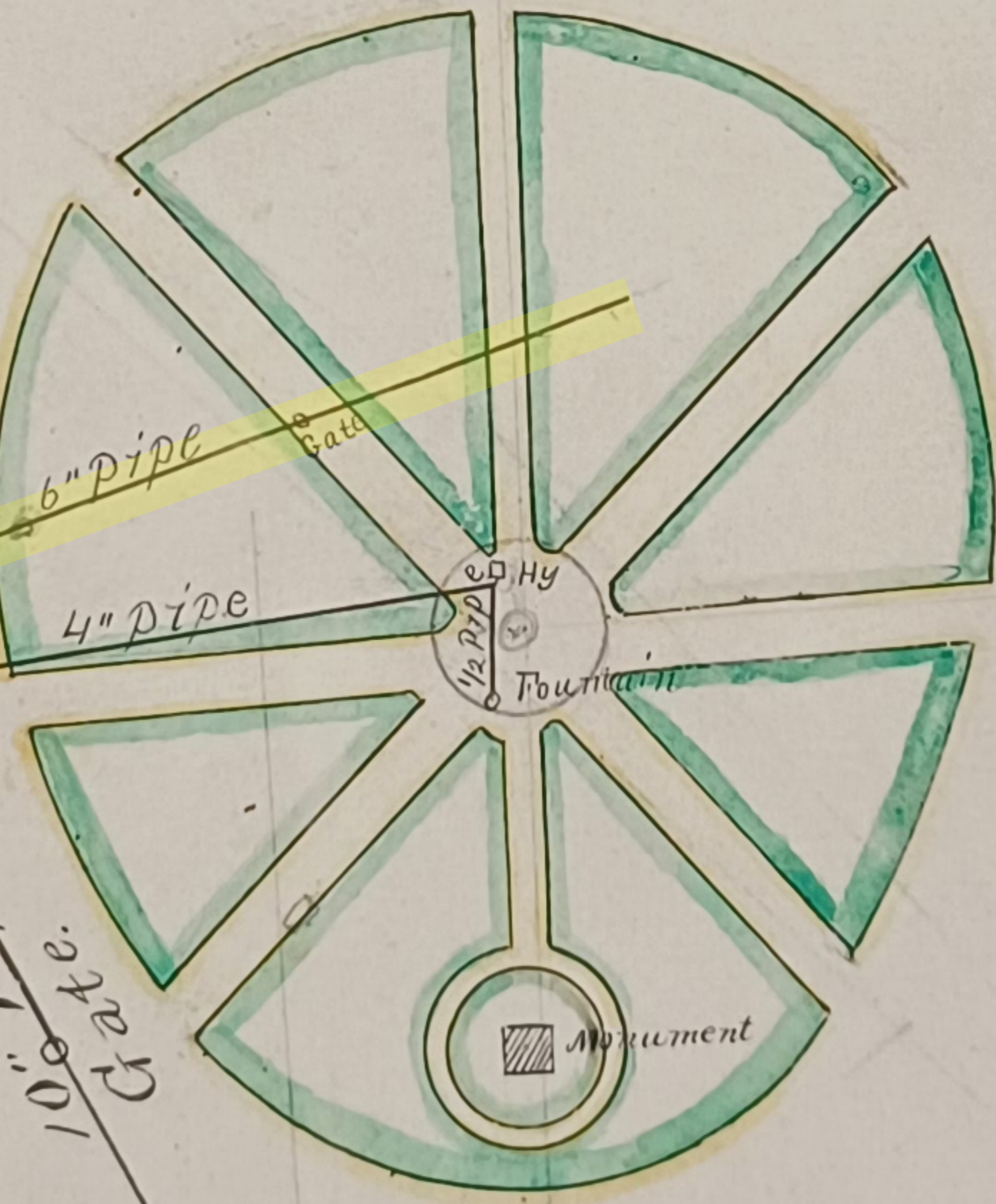
WASHINGTON ST

CENTRAL

4" pipe
WINTER ST.
Gate

4" Plug

Plug.



SQUARE

Bank Block Colony B. Bridgman B. Tillingham B. City H.

5

5

Gate

6" pipe Gate.

6" pipe Gate

ROXBURY ST.

6" Pipe Gate

WEST ST.

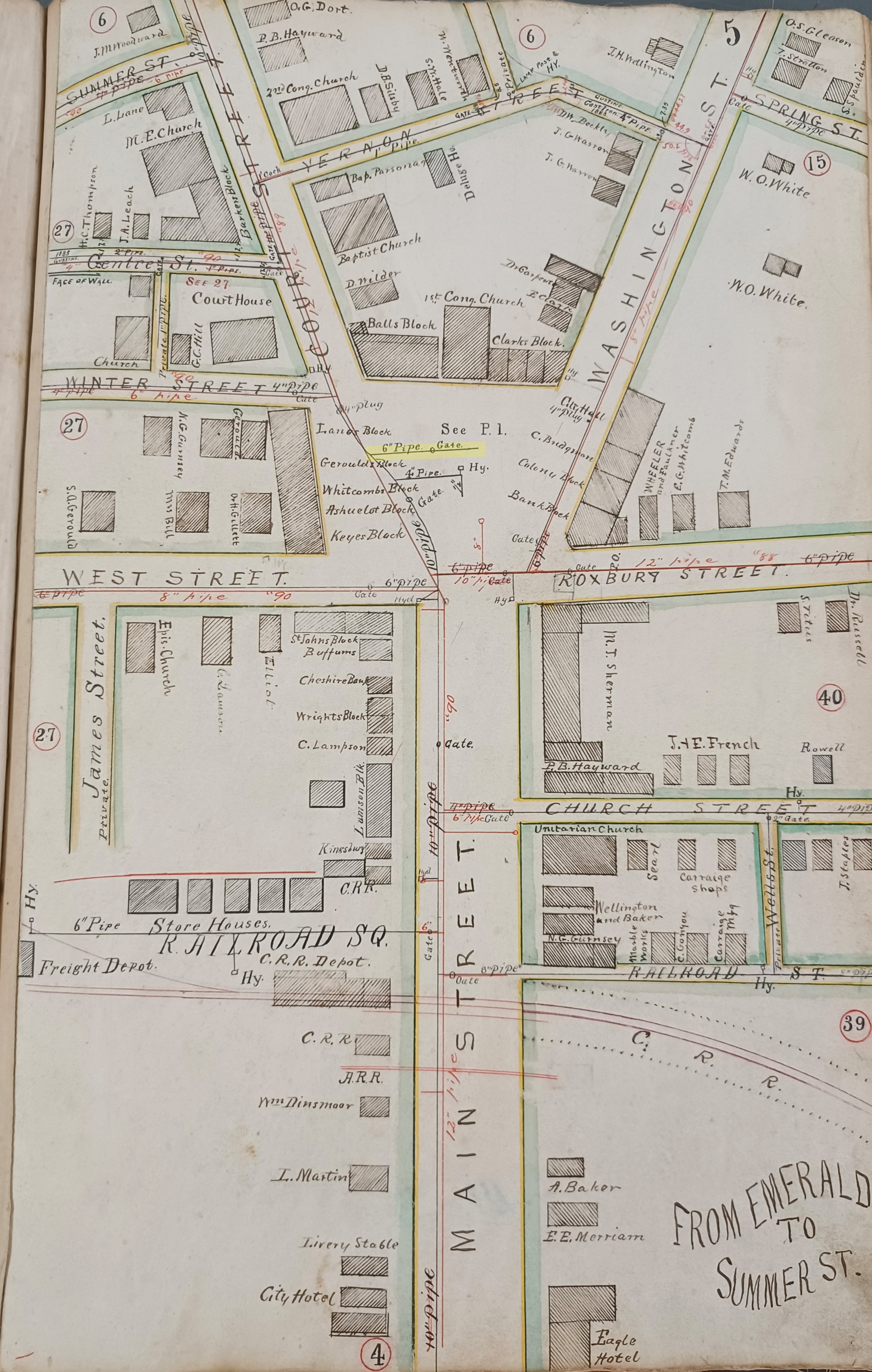
St. Johns Block

Cheshire House

10" Pipe.

5

IN ST.



Section 3. From Sec. 2 near Allen's to Sec. 4 School St. Maps 8, 7, 6.

	Gates	12 in.	at Sec. 2 near Allen's.	8
Court St.		10 "	to " 4 opp. School St.	6
		4 "	" " 109 " "	6
		8 "	" " 18 Cross "	6
P.W. + S.P. Co. 1868-9		4 "	" " 28 High "	7
12 in. S.F. + C. about 2200 ft.		2 "	" " 31 Forest "	7
10 " " " " 400 "	X	2 "	" " 117 Portland St.	7
		4 "	" " 32 Prospect "	8
	Branch	4 "	(Plugged) near Allen's	8
	Hydrants No.	47	opp. Prospect St.	8
	"	46	near G.D. Harris's	7
	"	45	opp. Forest St.	7
	"	44	cor. Cross "	6

Section 4. From School Street to Central Square. Maps 6, 5, 1.

	Gates	10 in.	at Sec. 3 opp. School St.	6
Court St.		10 "	to " 5 near Park, Central Sq.	5-1
Central Square.		4 "	" " 112 Winter St.	5
		2 "	" " 114 Centre "	5
		1 "	" " 115 " "	5
		1 "	" " 26 Vernon "	6
		4 "	" " 115 Summer "	6
		4 "	" " 21 Mechanic "	6
	Branches	6 "	(Plugged) Central Park	5-1
P.W. + S.P. Co. 1868-9		4 "	" opp. Winter St.	5-1
10 in. S.F. + C. about 1500 ft.		4 "	" Union St.	5
	Hydrants No.	1	Central Park	5-1
	"	41	cor. Winter St	5-1
	"	42	" Summer "	6
	"	43	" School "	6
	Drinking Fountain		Central Park.	

Section 5. Central Square, West Side to Lamson Building. Maps 5-1

	Gates	10 in.	at Sec. 4 near Park.	5-1
Central Square.		10 "	to " 6 " Lamson Building.	5
Main Street.		6 "	" " 97 West St.	5-1
		6 "	" " 9 Roxbury + Washington Sts.	5-1
P.W. + S.P. Co. 1868-9	Hydrant No.	2	Cor. Main + West "	5-1
10 in. S.F. + C. about 330 ft.	Drinking Fountain		Head of Main St.	