

KEENE INFRASTRUCTURE IMPROVEMENTS **PHASE 2 PRELIMINARY DESIGN** **CENTRAL SQUARE**

MSFI COMMITTEE MEETING

MAY 22, 2024

Seat Wall

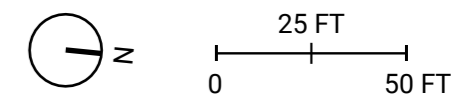
Bike Lane

Bike Rack

Public Art

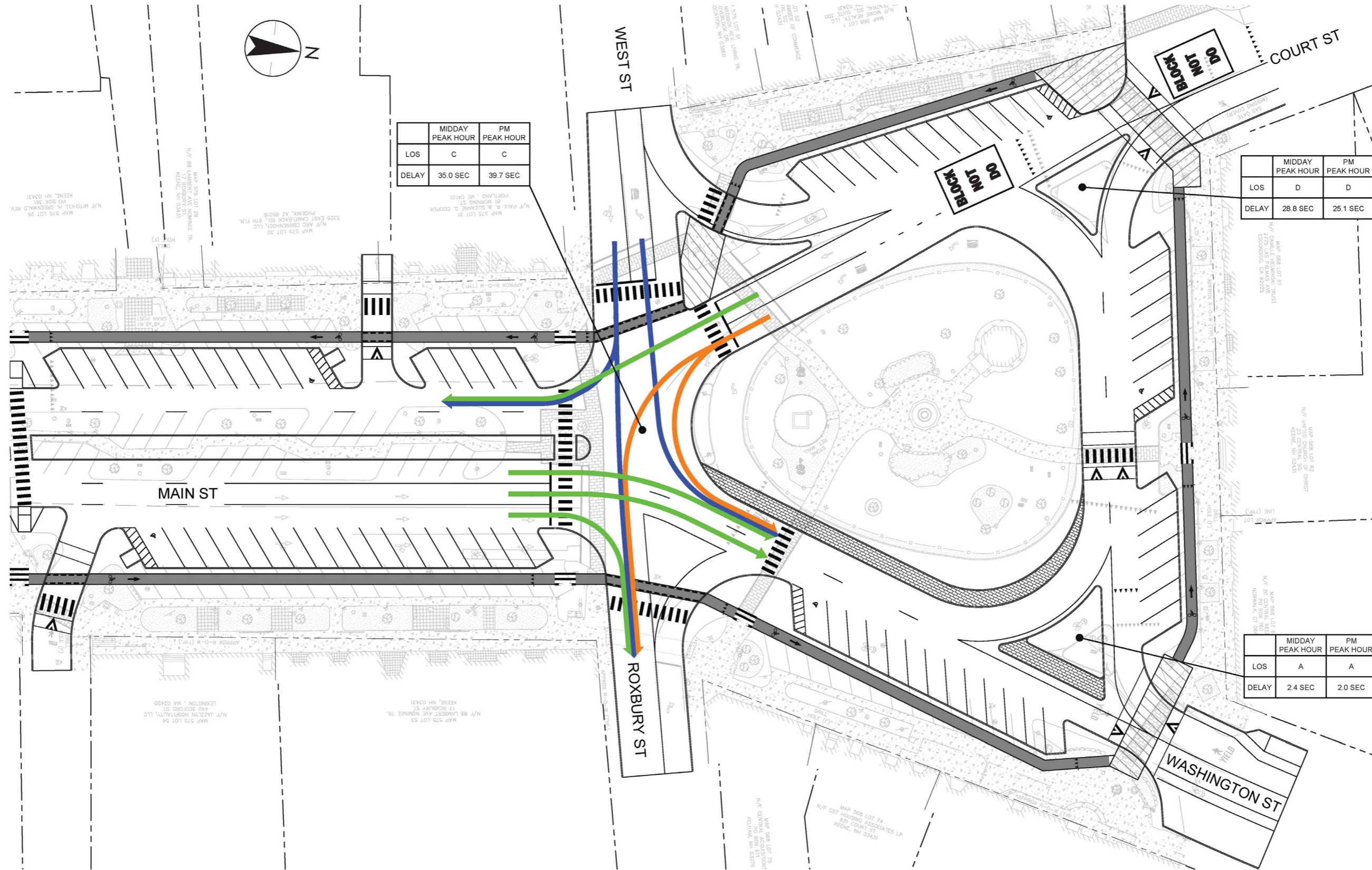
Outdoor Café

KEENE PHASE 2 | CENTRAL SQUARE EXISTING CONDITIONS



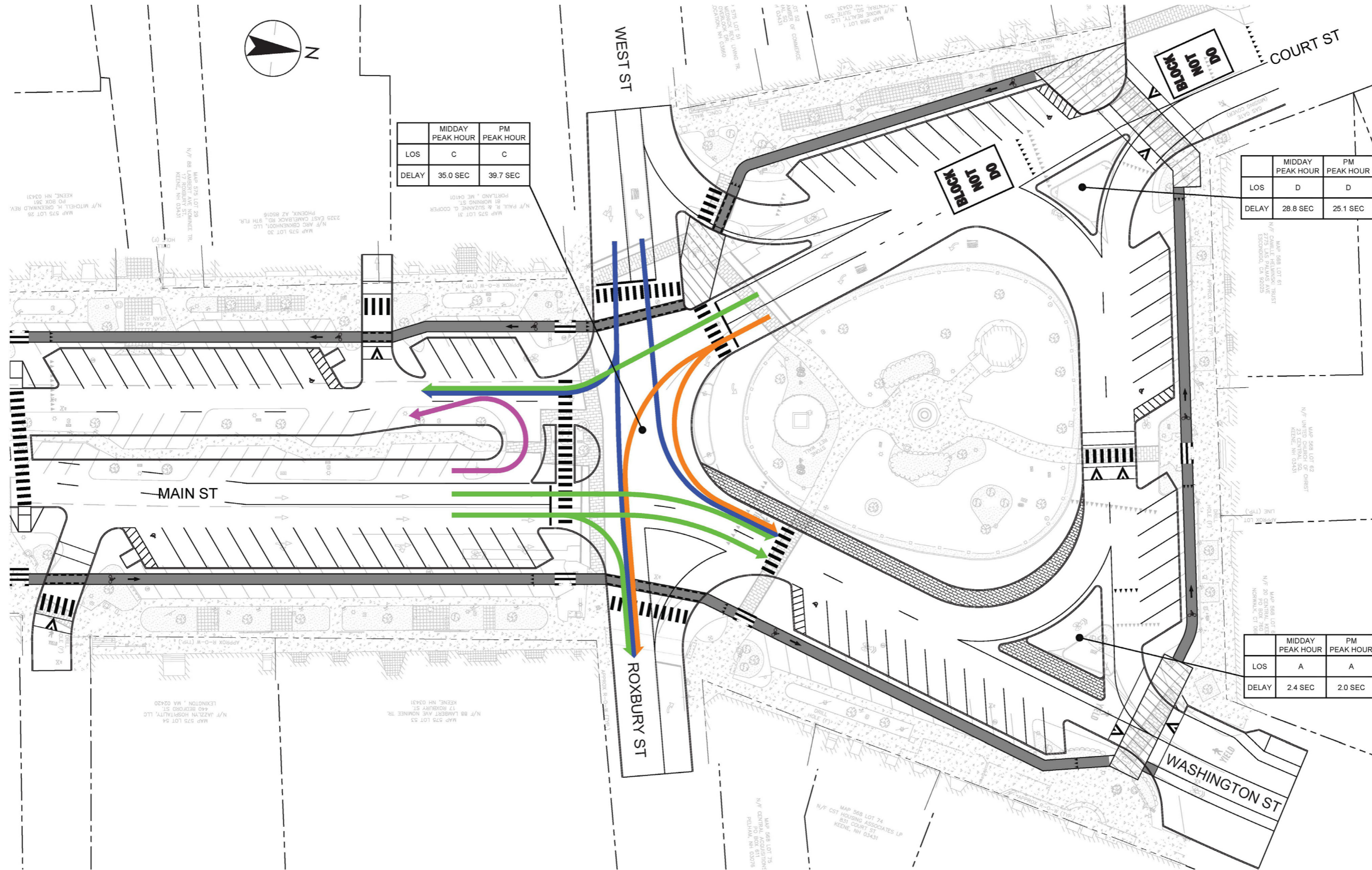
KEENE PHASE 2 | TRAFFIC/CIRCULATION

SIGNAL PHASING - RECOMMENDED ALTERNATIVE



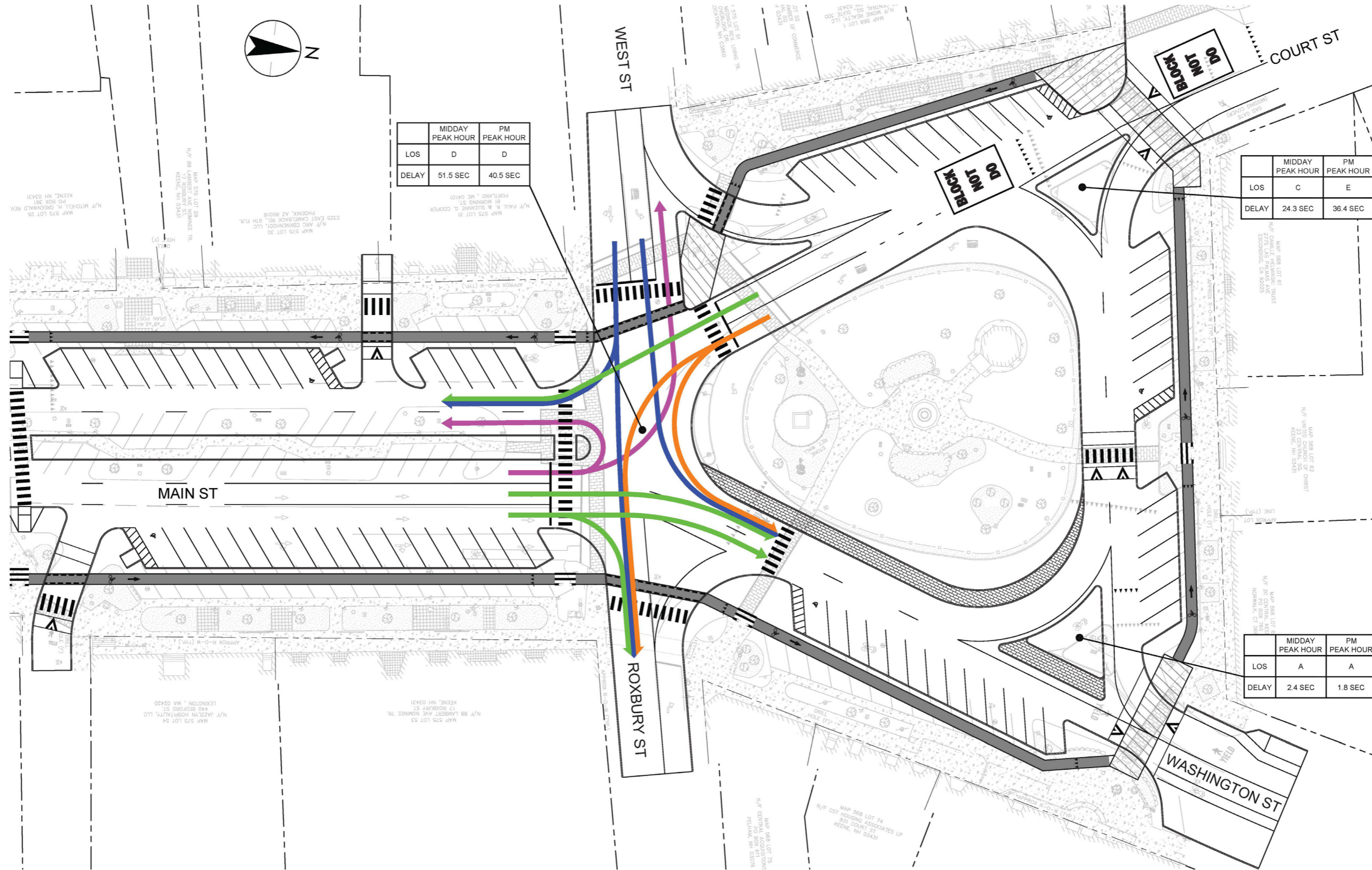
KEENE PHASE 2 | TRAFFIC/CIRCULATION

SIGNAL PHASING - U-TURN ALTERNATIVE



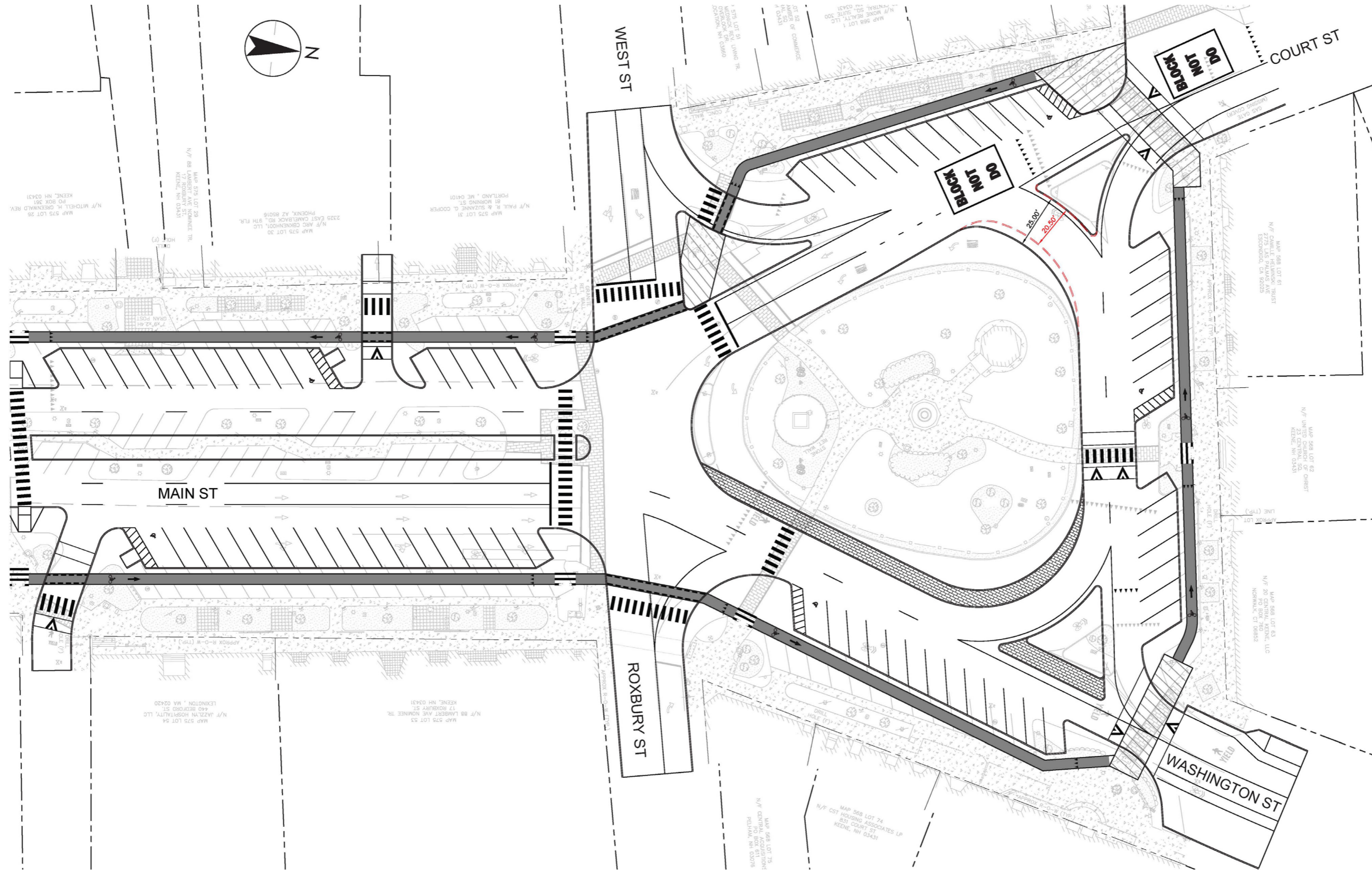
KEENE PHASE 2 | TRAFFIC/CIRCULATION

SIGNAL PHASING - LEFT-TURN ALTERNATIVE



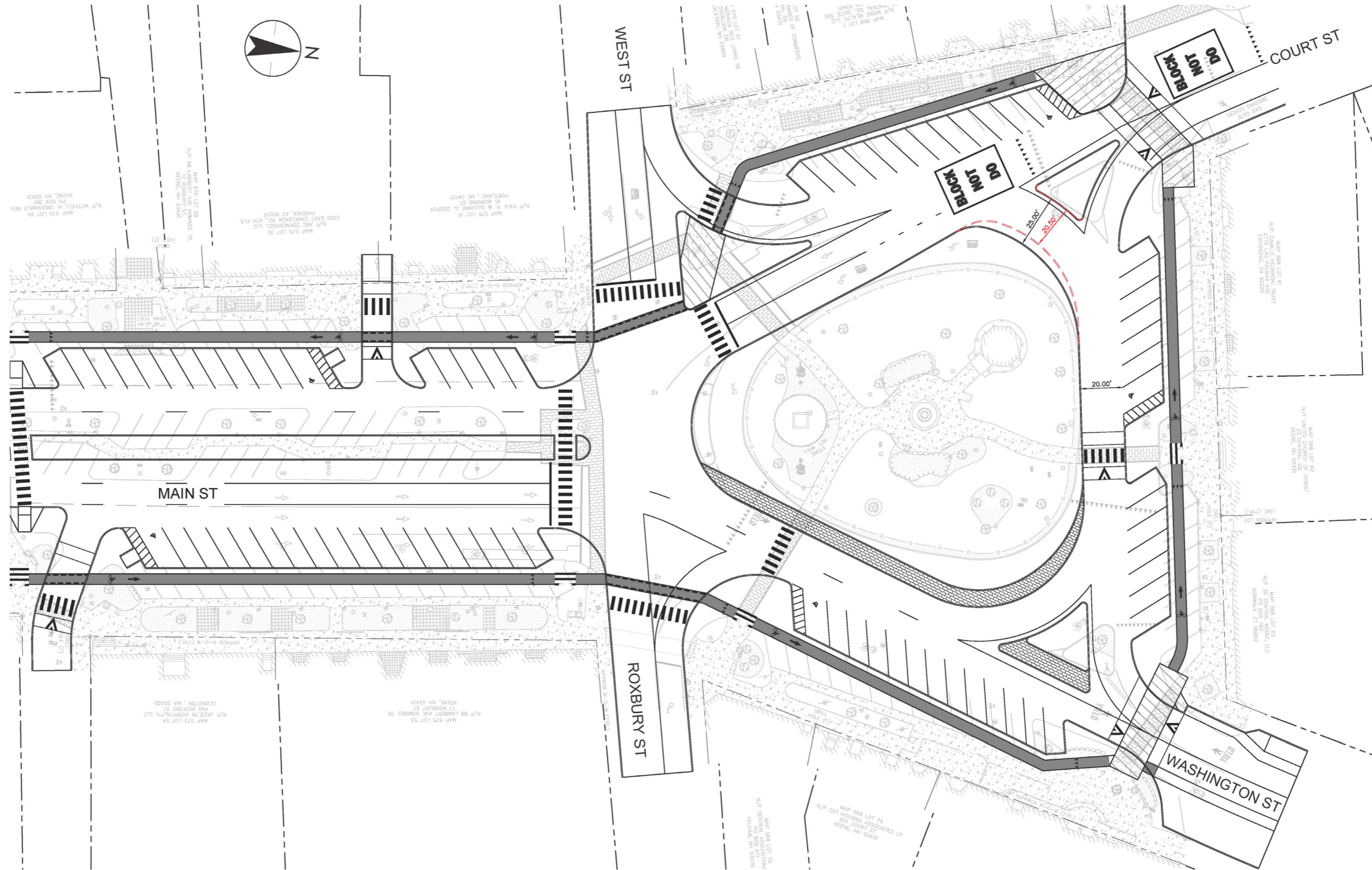
KEENE PHASE 2 | TRAFFIC/CIRCULATION

TWO LANES AT NORTH OF SQUARE



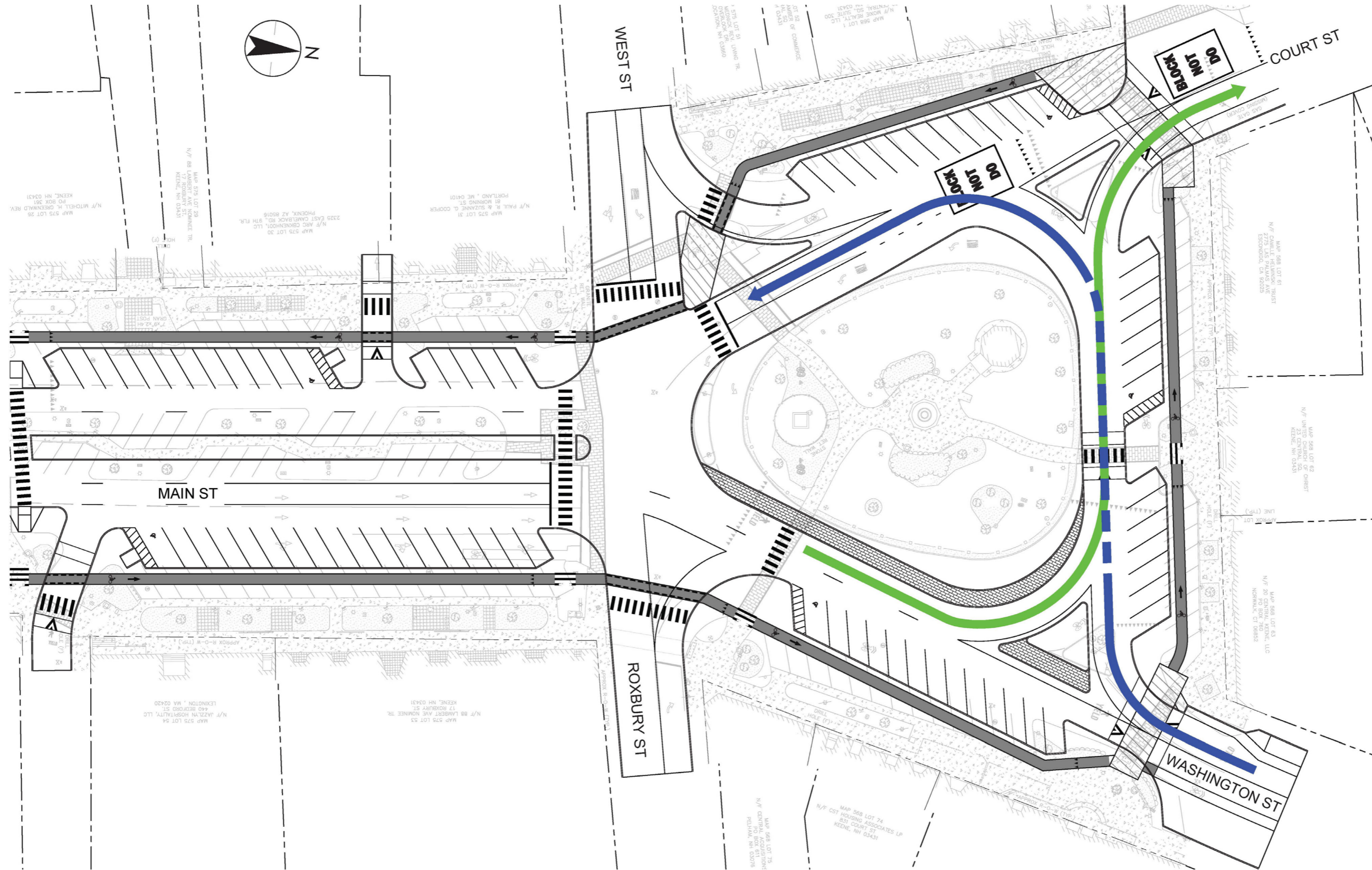
KEENE PHASE 2 | TRAFFIC/CIRCULATION

SINGLE LANE AT NORTH OF SQUARE



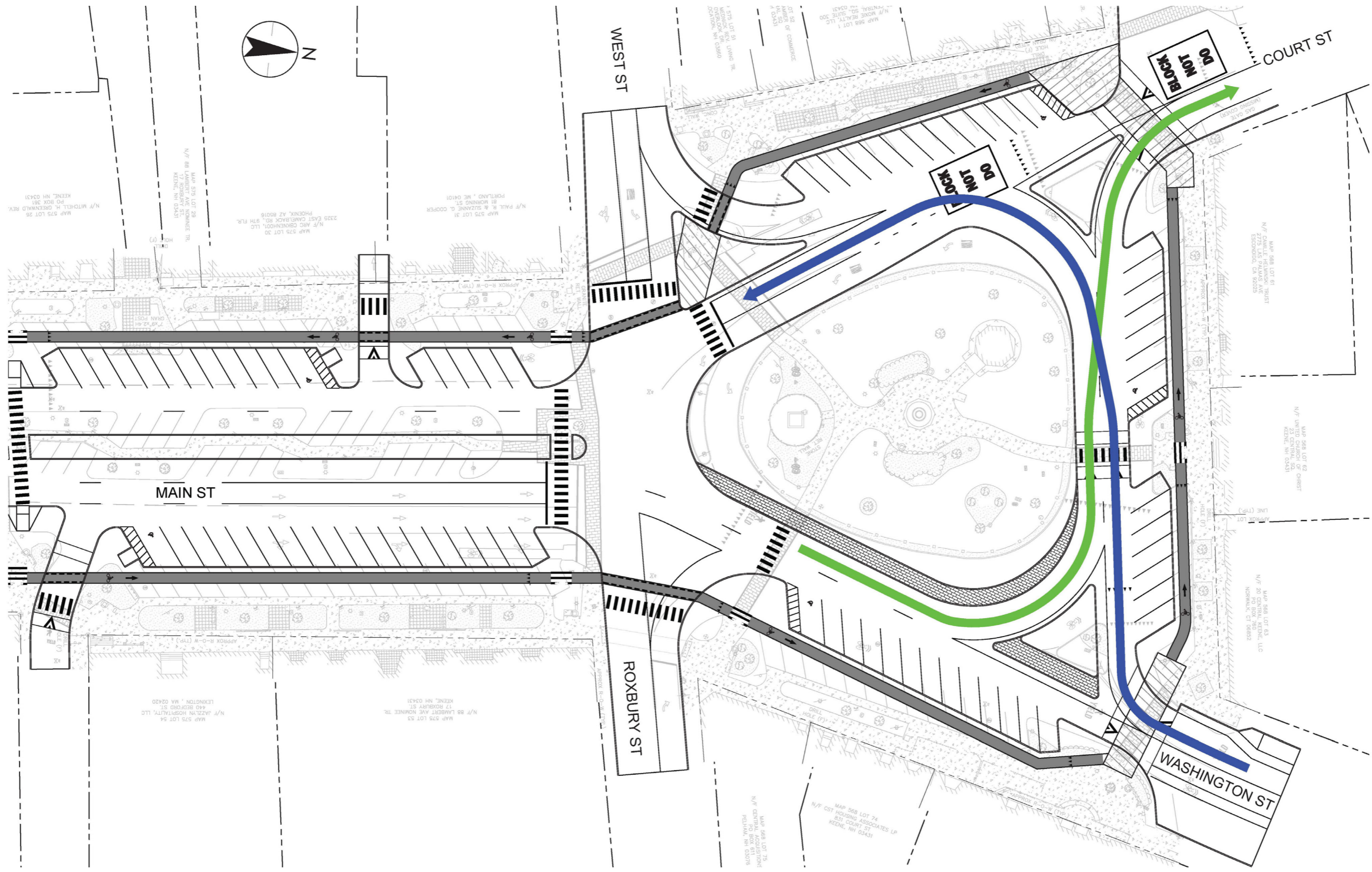
KEENE PHASE 2 | TRAFFIC/CIRCULATION

SINGLE LANE AT NORTH OF SQUARE



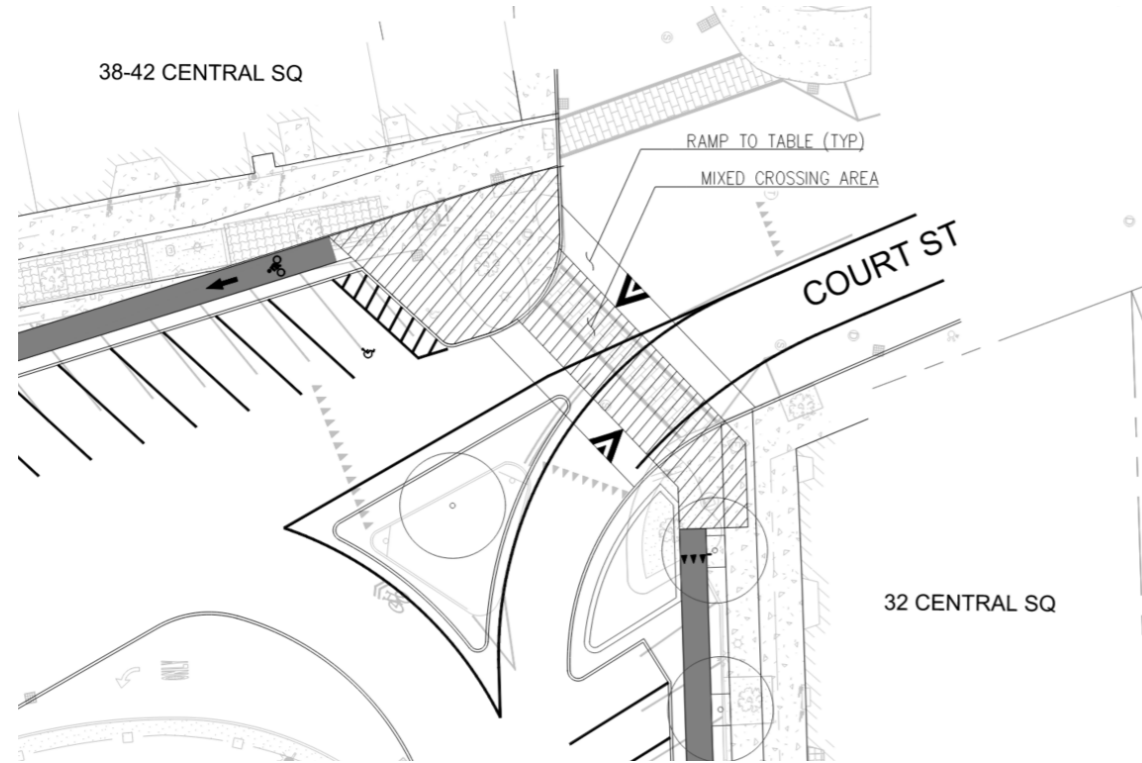
KEENE PHASE 2 | TRAFFIC/CIRCULATION

TWO LANES AT NORTH OF SQUARE



KEENE PHASE 2 | TRAFFIC/CIRCULATION

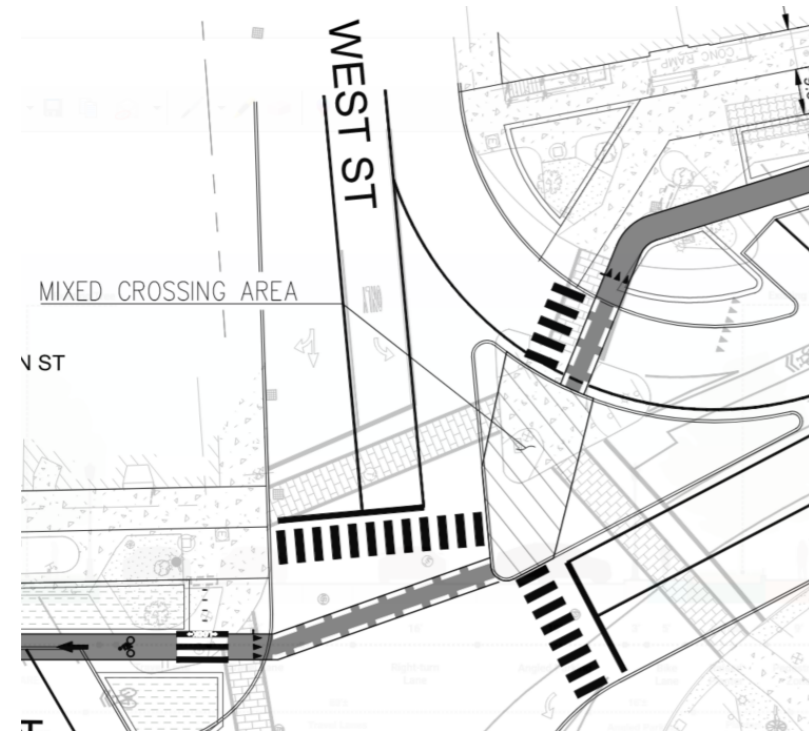
PEDESTRIAN & BIKE CROSSINGS



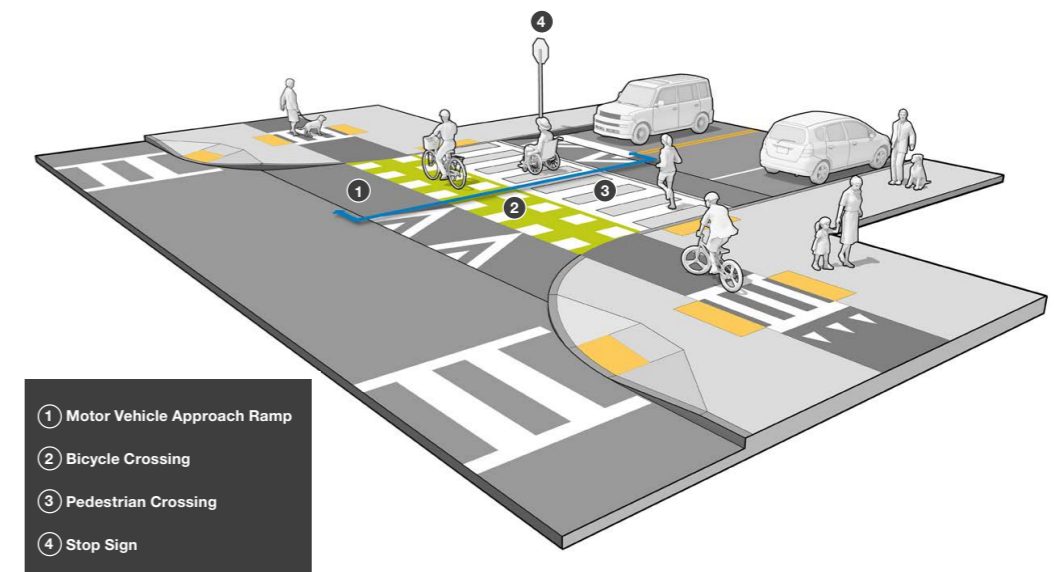
Tabled Crosswalk, Chicago Streets Blog



Rectangular Rapid Flashing Beacon



Bike Lane Crossing, Cambridge, MA



MassDOT Separated Bike Lane Planning & Design Guide

Traffic/Circulation

- The U-turn south of the intersection had the most support of the U-turn alternatives.
- The single/double lane across the top of the square was mixed, about 50/50 between the two alternatives.
- General concern that reducing from two southbound through lanes to one will create backups along Court and across the top of the Square.
- Strong support for the raised crosswalks and RRFB(Rectangular Rapid Flashing Beacon) as shown.
- Concern with reducing to a single left turn lane from crossover to Court/West Street.

South side of the Square

1. Which alternative do you prefer for north-bound Main

Street traffic:

- a. No U-turns permitted.
- b. Dedicated U-turn lane; One lane for Court St. & West St. traffic and one lane for Roxbury St. & Washington St. traffic
- c. Allow Left & U-turns from the left lane (not recommended)

Traffic Circulation around the Square

2. Do you prefer two circulating lanes on the north side of the square or a single circulating lane?
3. Do you want raised crosswalks across Washington St., Court St., and Central Square (in front of church)?
4. Do you want Flashing beacons installed at these three crossings?
5. Do you prefer south-bound traffic to be provided with:
 - a. A left / U-turn lane and a single thru lane (recommended)?
 - b. A left / U-turn lane and two thru lanes?

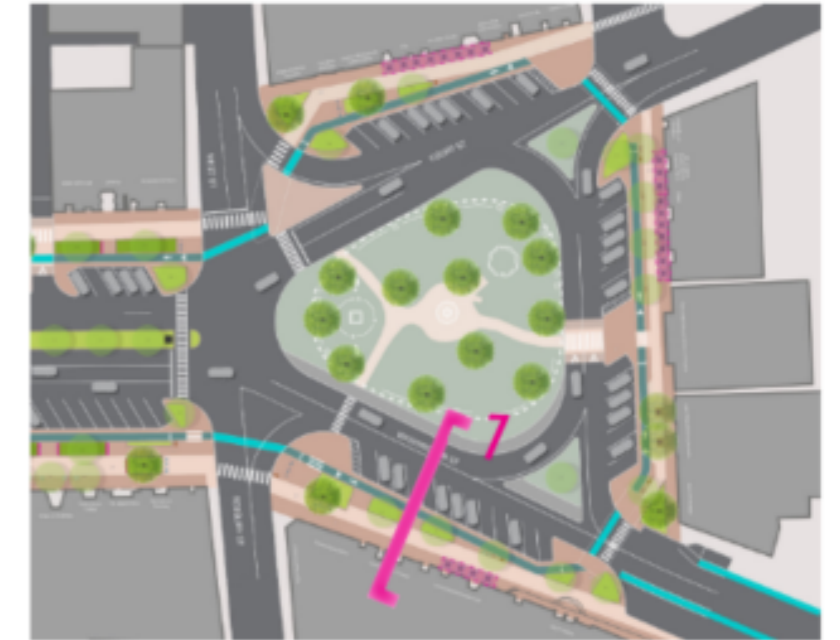
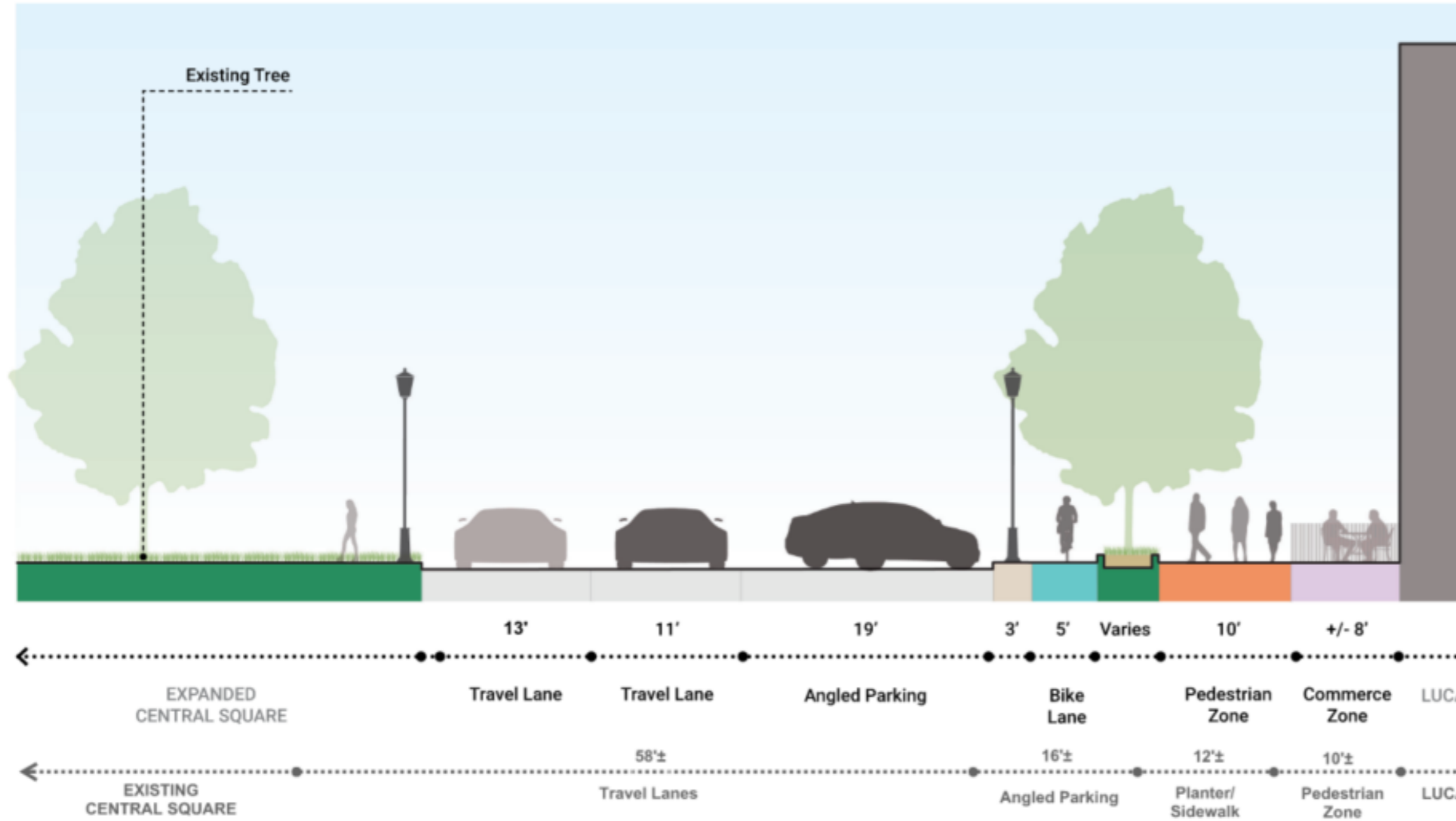
KEENE PHASE 2 | SIDEWALK/STREETSCAPE
TWO LANES AT NORTH OF SQUARE



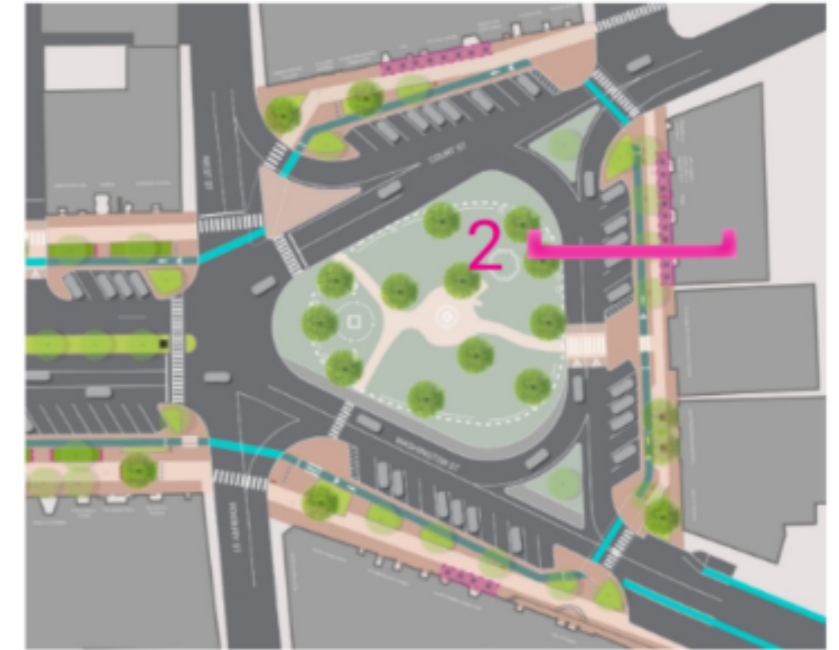
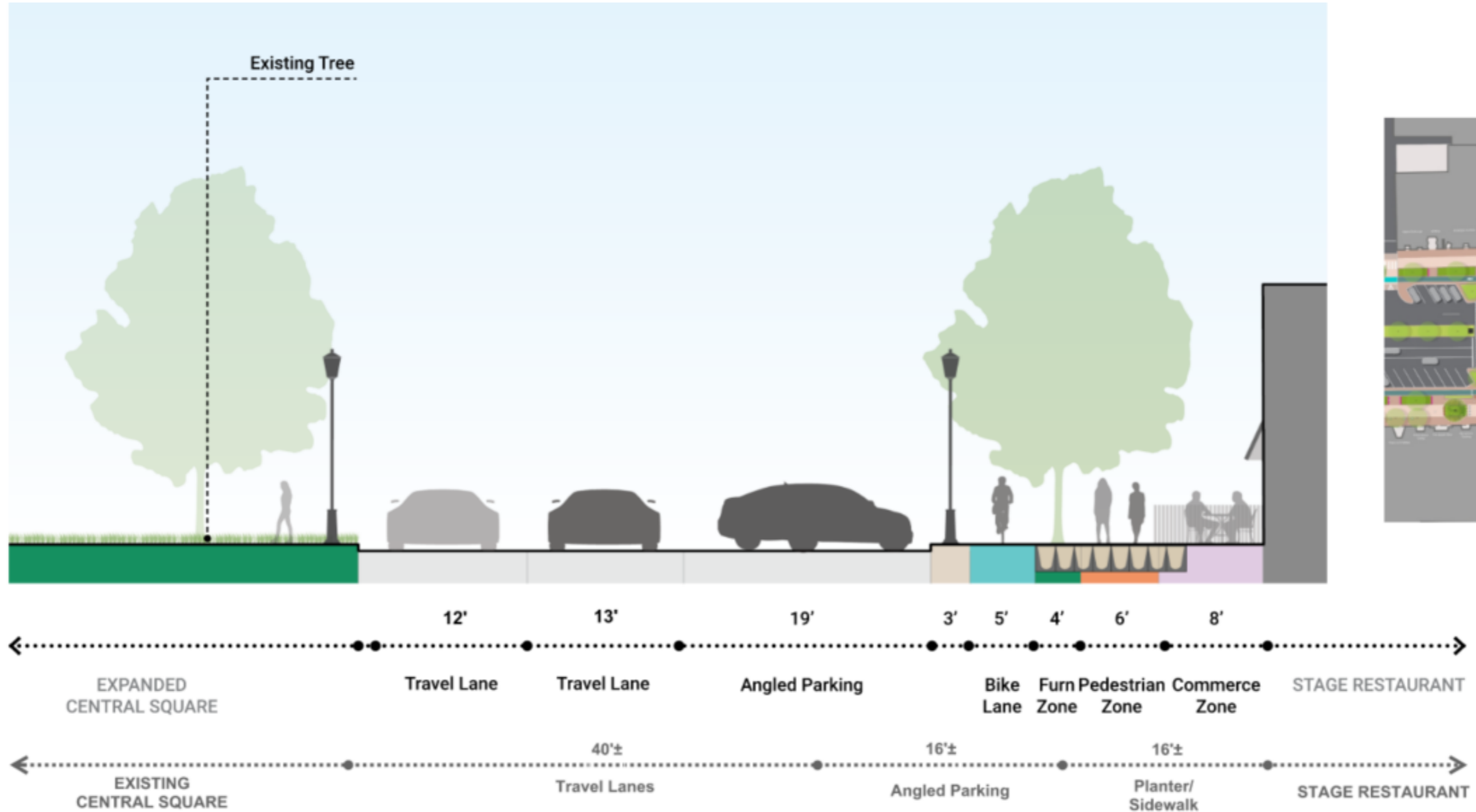
KEENE PHASE 2 | SIDEWALK/STREETSCAPE SINGLE LANE AT NORTH OF SQUARE



KEENE PHASE 2 | SIDEWALK/STREETSCAPE SECTION VIEW - WASHINGTON ST

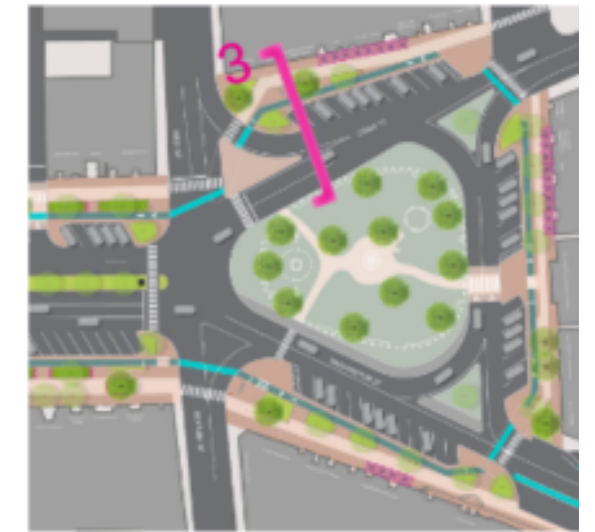
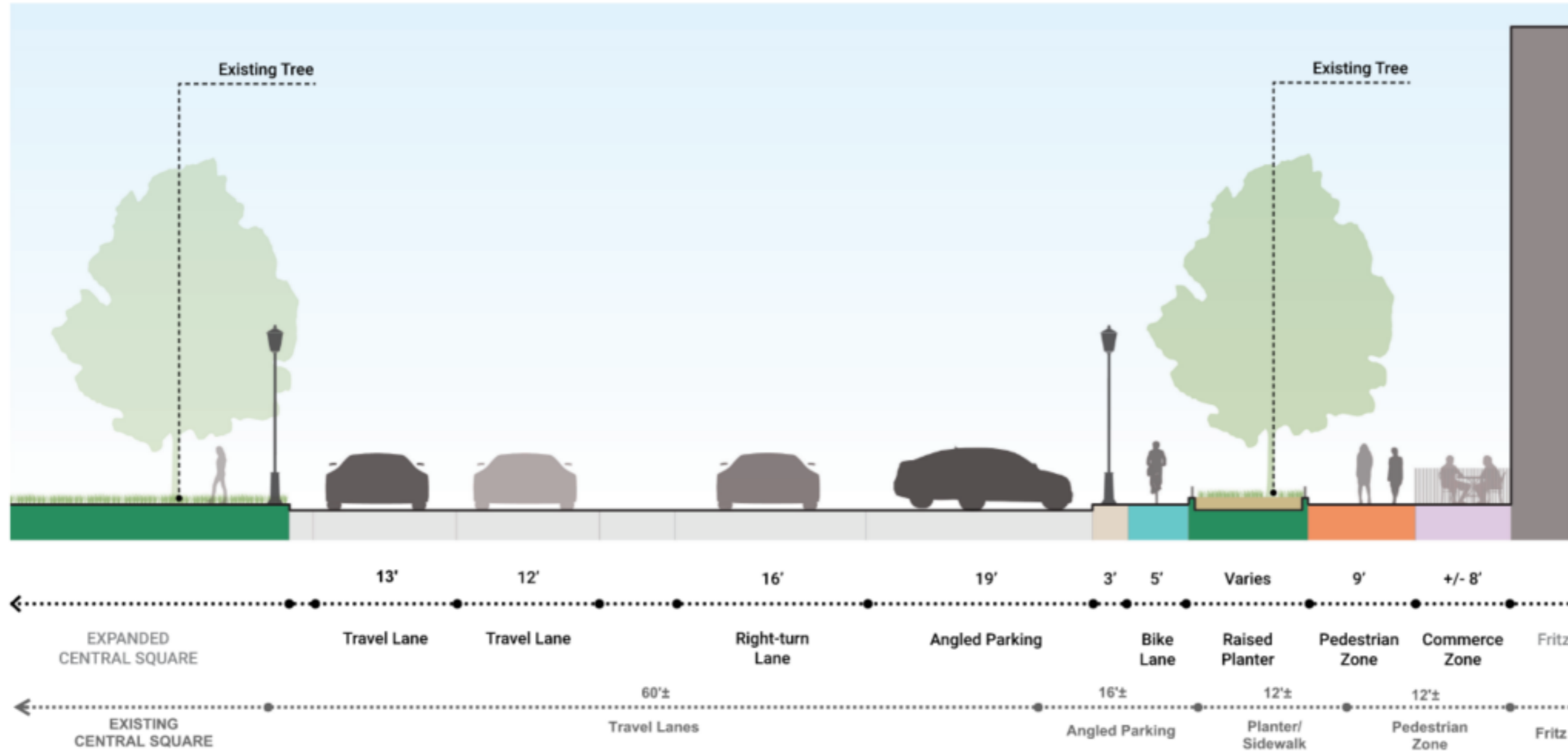


KEENE PHASE 2 | SIDEWALK/STREETSCAPE SECTION VIEW - NORTH CS



KEENE PHASE 2 | SIDEWALK/STREETSCAPE

SECTION VIEW - COURT ST



Sidewalk/Streestcape

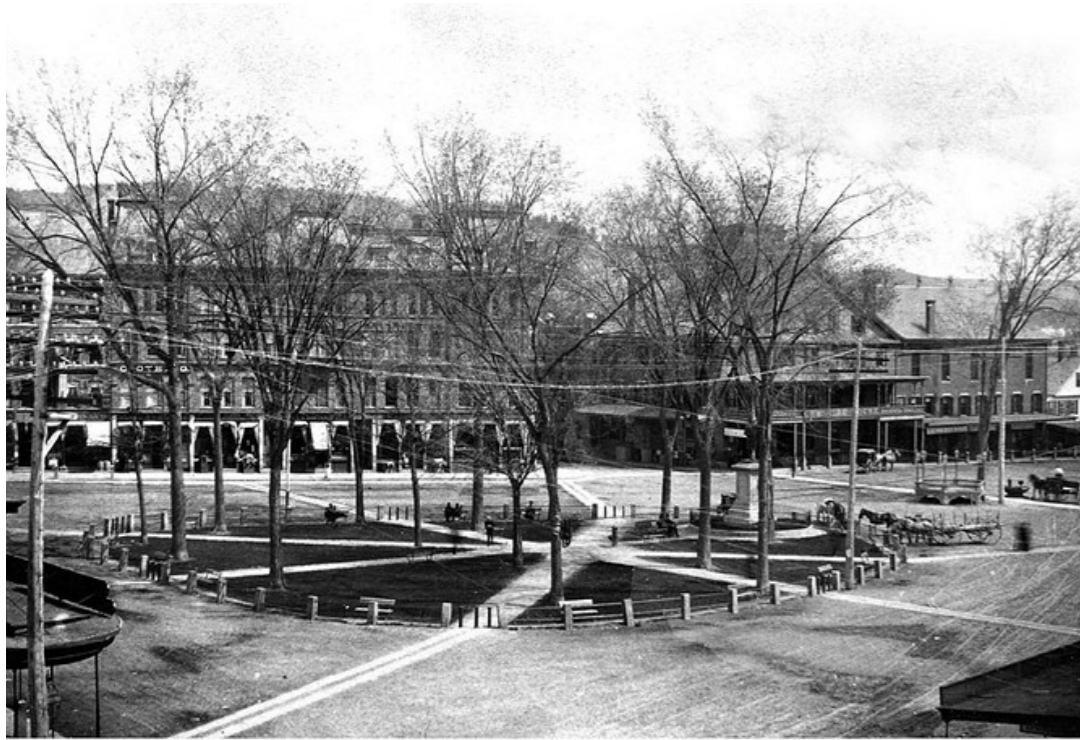
- Mixed reactions on RRFBs(Rapid Rectangular Flashing Beacon), trended towards against but some people were in favor of adding one at the midblock in front of the Church
- Positive feedback about raised crossings
 - Question on material/signage to indicate it's a space for both peds and bikes
- Some concerns over roadway narrowing, but positive feedback about improved streetscape width

- Discussion of intersection at Court and Winter
 - Should a stop sign be added on Court?
 - Should “do not block the box” striping be added to allow a left turn on Winter?
- **Businesses may be looking to be flexible with commerce zones**

Exterior Sidewalks

1. Would you like to see any changes to the proposed “sidewalk commerce” zones?
2. If additional sidewalk space is available (refer to Question No. 2), should it be used to increase the available “pedestrian zone”, “commerce zone” or “furnishing zone” (i.e. more landscaping)?

KEENE PHASE 2 | CENTRAL SQUARE COMMON HISTORIC PHOTOS



KEENE PHASE 2 | CENTRAL SQUARE COMMON

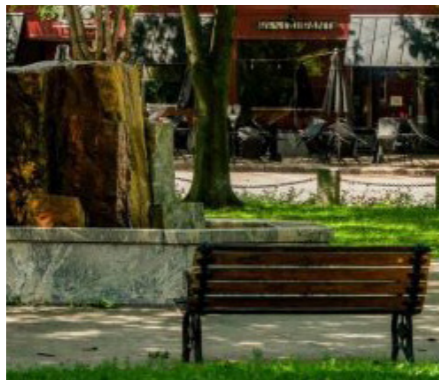
EXISTING ELEMENTS



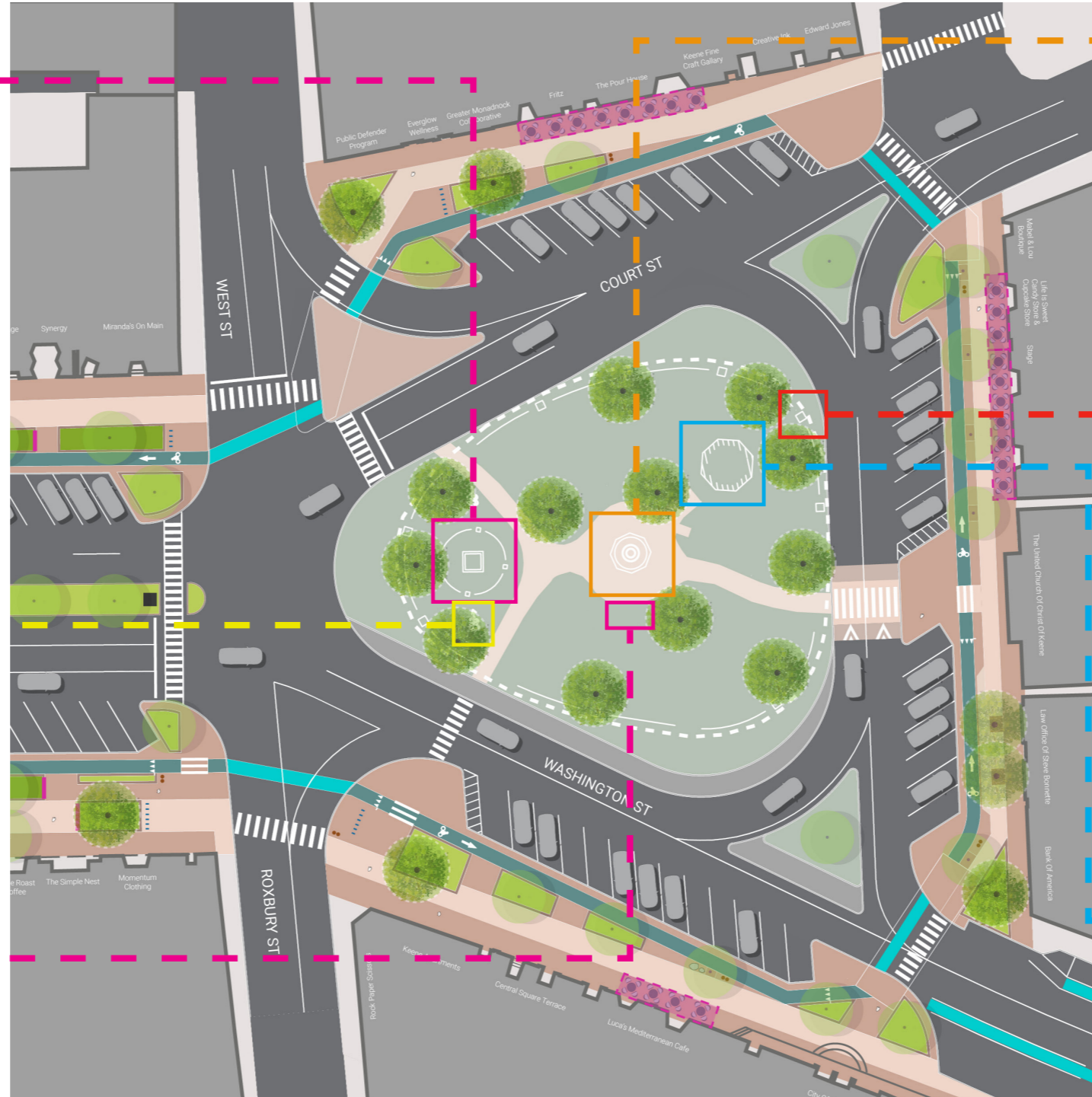
Soldiers' Monument - Should statue be moved out to the nose to be more prominent?



Cannon - Should cannon/cannonballs be moved out to the nose to be more prominent?



Bench - Should more bench seating be provided?



Water Feature



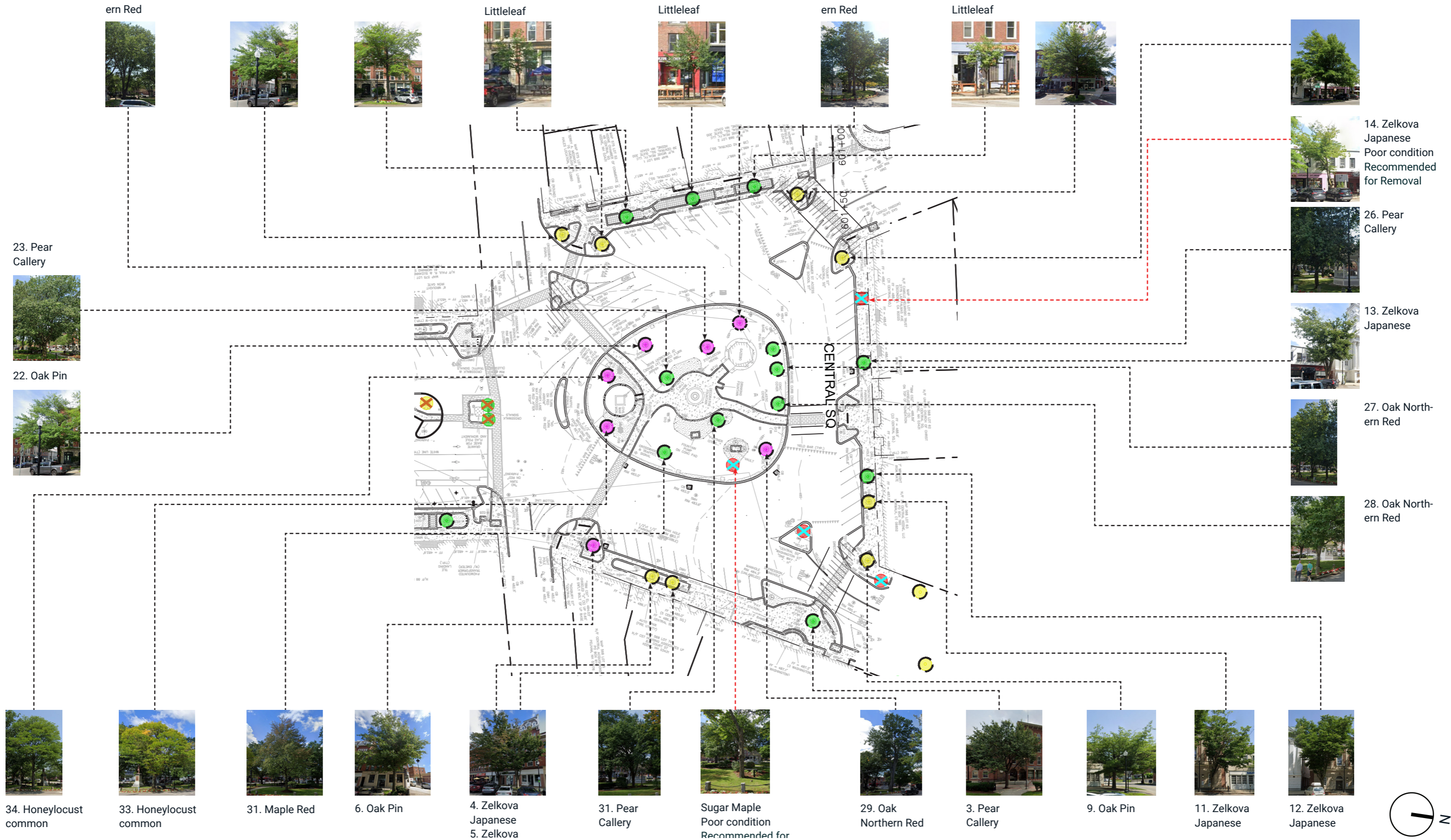
Bollard - Granite post and chain detail to be moved to perimeter?



Gazebo/Bandstand - Should Gazebo/bandstand be moved to provide more space around it? prominent?

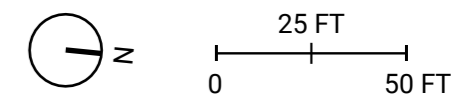
KEENE PHASE 2 | CENTRAL SQUARE COMMON

EXISTING TREE ASSESSMENT



KEENE PHASE 2 | CENTRAL SQUARE COMMON

EXISTING CONDITIONS



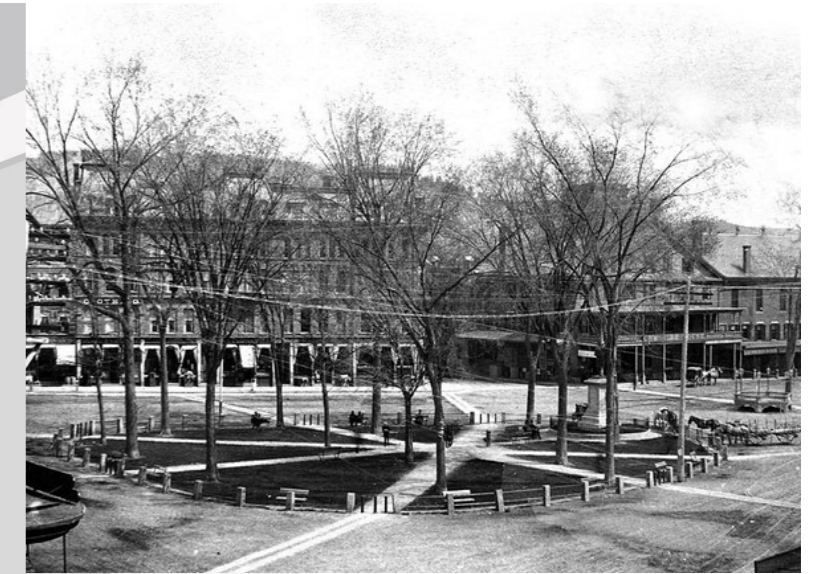
KEENE PHASE 2 | CENTRAL SQUARE COMMON

OPTION 1 - MINIMAL



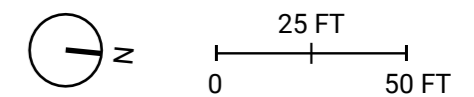
KEENE PHASE 2 | CENTRAL SQUARE COMMON

OPTION 2 - ENHANCED



KEENE PHASE 2 | CENTRAL SQUARE COMMON

OPTION - NEW



Central Square Common

- General preference for Option 1 Minimal and Option 3 New

- People liked the directness of the paths, especially the connection from Court St to Washington St crossing, beneficial for when there are performances and want to avoid the crowd near bandstand
- People generally wanted to maximize the green space, felt the perimeter path was not needed and busy
- Concern about removing the honeylocust tree for the new path in Option 3
- Current number of benches are fine, people like to come with their own chairs and blankets for performances
- General preference for brick or unit pavers as accents in key areas

- Many people thought the water feature should be upgraded and improved, has issues turning on and does not look great, it does not buffer traffic noise

- General agreement on expanding stairs at Gazebo, open to relocation to increase seating area during performances, likes the wood aesthetic but not tied to this specific structure

- Statue can stay in place or relocated south to make room for more green space, no strong opinion either way

- People generally agree that shorter crosswalks on Washington and Court was a positive and safer and easier to access the green, supportive of raised crosswalk at north end of the square

- Need to maintain traditional New England character

- Need to protect existing trees

Landscaping Treatments for the Common

1. **What is your preference for walkway on the common:**
 - a. Minimal changes, only as needed to meet proposed crosswalks.
 - b. Add an exterior circulating loop and spokes.
 - c. Reconfigure walkways to create direct paths along desire lines.
2. **Do you prefer that all walkways remain concrete, or should we selectively use pavers or other treatments to highlight areas of the common?**
3. **Do you want to reconfigure the band stand to allow improved visibility of performers?**
4. **Do you want to relocate the band stand to increase seating on the lawn?**
5. **What is your preference for the fountain:**
 - a. Keep the existing fountain.
 - b. Replace the existing fountain with a more historical fountain (e.g., cast iron)
 - c. Eliminate the water feature entirely.
6. **Do you prefer to keep the statue in its current location or relocate closer to the southern tip of the common?**
7. **Do you want to keep the cannons and cannonballs or remove them?**
8. **Do you have any concerns about adding trees to the common or removing shrubs around the fountain area?**