



CITY OF KEENE
NEW HAMPSHIRE

Trustees of Trust Funds

AGENDA

City Hall 3rd Floor Conference Room
March 19, 2025
9:30 AM

Martha Curtis, Chairman
Marilyn Gemmell, Vice Chairman
Michelle Howard
Allen Mendelson
Malcolm Katz

-
1. (9:30) William Dow – Records Manager – Request to expend \$1,000 from Ingersoll Trust for LED cabinet lighting system in the City Hall lobby cabinets
 2. (10:00) Bradford Keay, Keene FD Wellness Committee Member- Use of Renouf Fund
 3. Approval of the January 2025 Minutes
 4. Common Trust Fund
 - a. #968 Maurice Alger Scholarship for 2025
 - b. Use of Funds – #906 Clement Woodward Fund **\$2,310.00**
 - c. Approval of Receipts – None
 - d. Approval of Disbursements – **\$1,990.00**
 - i. #974 Peterborough Marble and Granite (move and reset markers) \$90.00
 - ii. #936 Mark Johnson (park cleanup) \$1,900.00
 5.
Capital Reserve Portfolio
 - a. Approval of Receipts
 - i. None
 - b. Approval of Disbursements – **\$313,394.05**
 - i. #800 Ambulance Replacement = \$32,330.94
 - ii. #802 Fire Equipment = \$57,844.62
 - iii. #812 Transportation Improvement = \$16,840.63
 - iv. #834 Sewer Infrastructure Capital Reserve = \$178,738.48
 - v. #842 Water Infrastructure Capital Reserve = \$27,639.38
 6. Distribution of MS9 for the period ending January 31, 2025 and February 28, 2025
 - a. Common Trust Funds
 - b. Capital Reserve Funds

7. Updates/Future Items

- a. Periodic Review of Trusts and Capital Reserves – Cambridge Trust
 - i. April 16, 2025 – Cambridge Trust electronic review
- b. Review of Trust Fund Overview
 - i. #918 Serena W Upton Fund
 - ii. #916 Maria Giffin Charitable Fund
 - iii. #920 / #948 George B Elliot Charitable Fund

930

City of Keene
New Hampshire

MEMORANDUM

To: Trustees of the Trust Funds

From: William Dow – Records Manager/Deputy City Clerk



cc: Kari Chamberlain – Finance Director
Sherry Miller – Senior Staff Accountant
Patty Little – City Clerk



Date: February 21, 2025

Re: Ingersoll Trust expenditure request – Install additional Ingersoll Cabinet lights.

The Ingersoll cabinets located in the lobby of City Hall were installed in 1999. In 2017, the City Clerk's office coordinated the installation of an efficient light-emitting diode (LED) cabinet lighting system. It was recently determined that the current LED lighting system requires additional accent lights in the cabinets to enhance the various displays exhibited throughout the year.

The City Clerk's Office staff is requesting approval of the expenditure of funds from the Ingersoll Trust for the purchase and installation of additional accent lights. The estimated cost for this proposed cabinet lighting project is \$1,000.

10:00



DATE: March 16, 2025
TO: Renouf Fund Trustees
THROUGH: Sherry Miller
FROM: City of Keene Fire Department Wellness Committee member, Bradford Keay
SUBJECT: Request the use of Renouf Funds to implement preventative injury measures via improved physical fitness space in the City of Keene Central Fire Station.

RECOMMENDATION:

Central Station's current gym/fitness area is small and inadequate for ideal workouts for firefighters. It is also far from the apparatus bay, increasing response time in the event of a call during a workout.

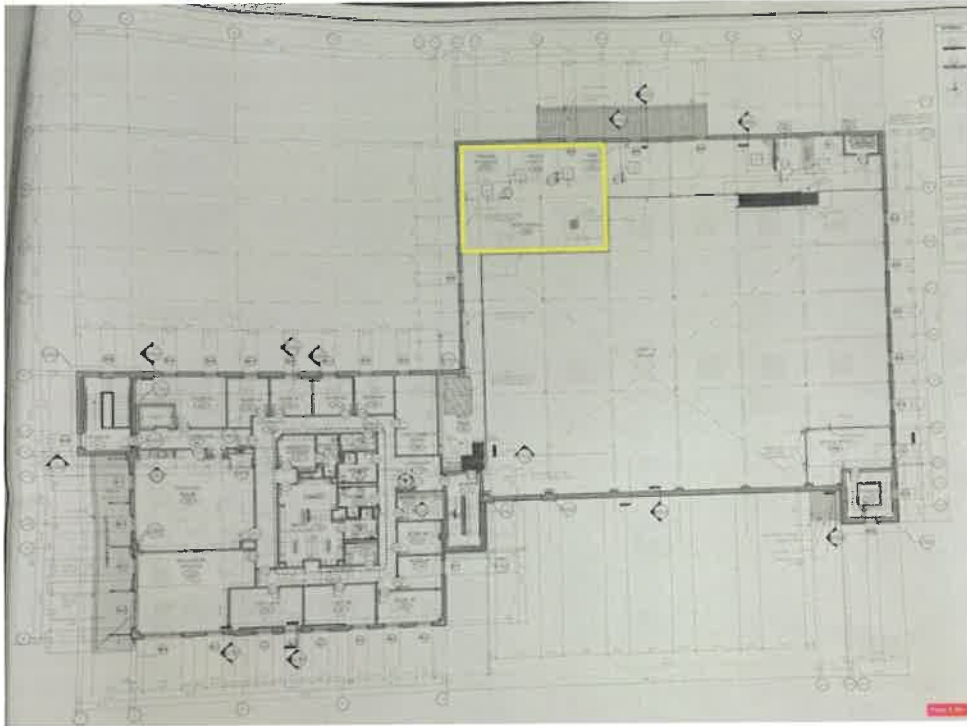
Physical fitness is essential for injury prevention in the fire department, as it enhances strength, endurance, flexibility, and mobility—reducing the risk of strains, sprains, and overexertion injuries. A strong cardiovascular system lowers the risk of heart-related incidents, the leading cause of firefighter fatalities. Regular training also promotes safe movement techniques, speeds up injury recovery, and improves mental resilience, helping firefighters stay alert under pressure. By maintaining fitness, firefighters can perform physically demanding tasks more safely and effectively, reducing injuries and extending their careers.

A new physical fitness area with proper equipment in the Central Fire Station would improve the frequency and quality of workouts for the firefighters preventing injuries.

PROPOSAL:

The Keene Fire Wellness committee proposes working with a fitness equipment vendor that also designs fitness gym spaces. It is planned to obtain more than one quote for the equipment and services. This will ensure an appropriate layout and optimize the space. We will evaluate the bids based on services provided as well as the quality of the equipment and what percentage of the scope we are looking for that the company can provide.

The space proposed for the new physical fitness area is the mezzanine over the apparatus bay, which is currently in use as storage and is being cleaned out. This space is approximately 30 by 36 feet of useable floor space and is in ideal proximity to the apparatus bay should a call come in during a workout. See the image below for the proposed location in the floor plan.



Central Fire Station floor plan with area of proposed new physical fitness space highlighted

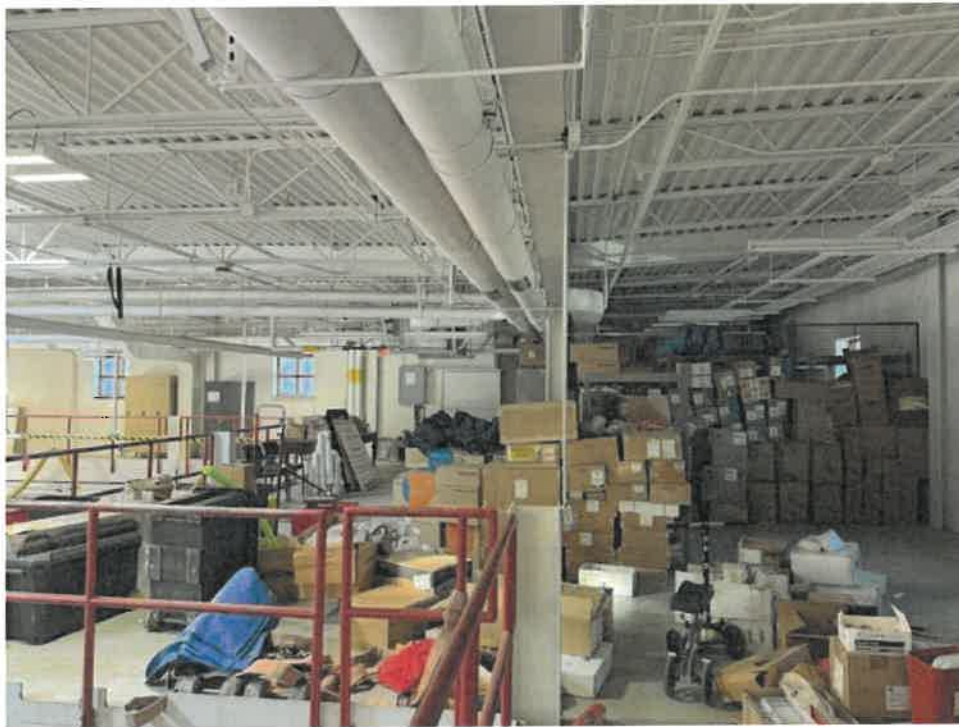


Image of proposed space on the mezzanine for the physical fitness space currently in use for storage



View of mezzanine space currently being used for storage



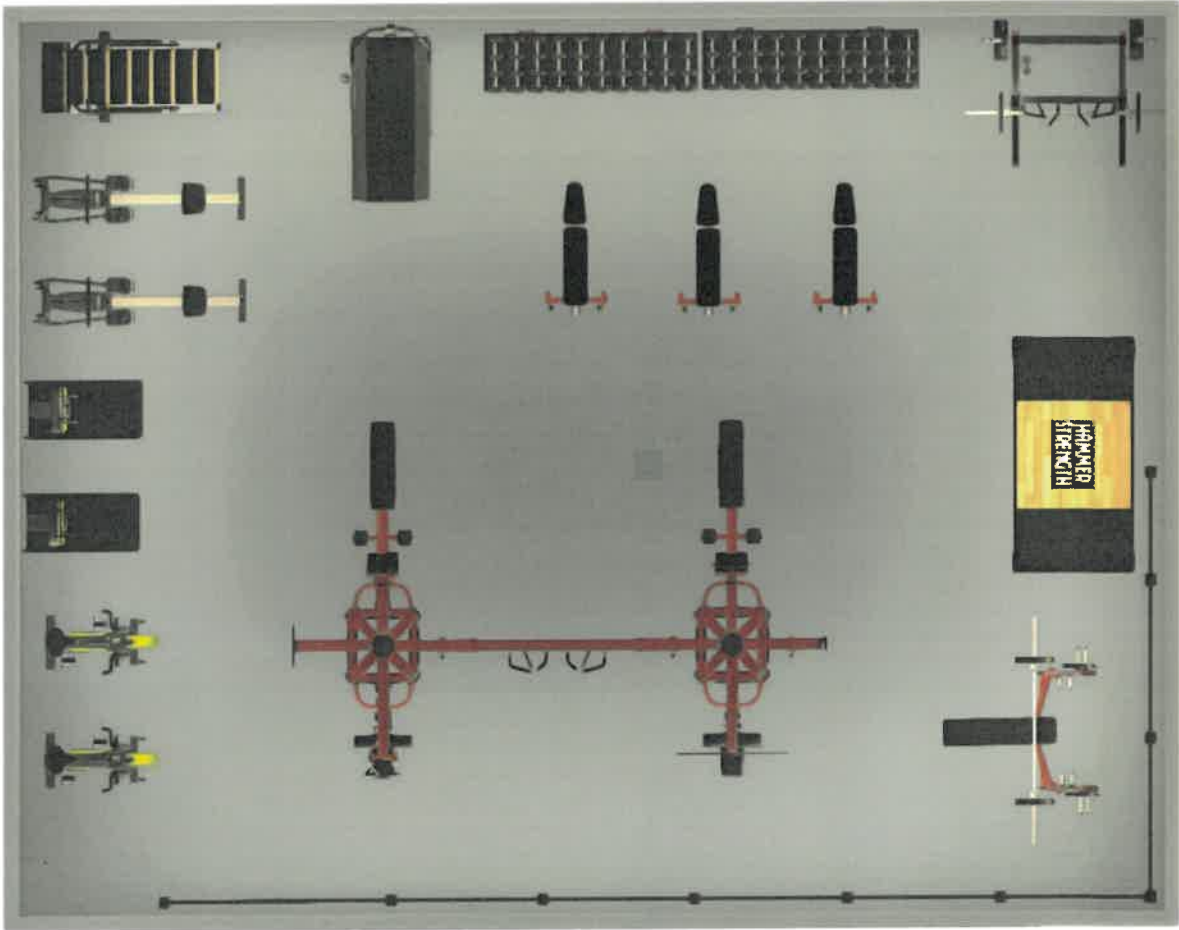
View across the mezzanine space looking at the proposed physical fitness space

The types of equipment that will be pursued are appropriate for industrial athletes and promote strength-building and endurance that are applicable to firefighting. These types of equipment include a Jacobs ladder, heavy medicine balls, push sled, Olympic weight lifting equipment and assault bikes, to name a few. See below for a full list of equipment that is being pursued.

Wellness Committee Equipment Planning List				
Equipment	Quantity		Equipment	Quantity
Jacobs Ladder	1		Weight vest Rogue	2
Concept 2 Rower	2		Weight vest weight	2
Ski Erg	2		Matador (Tri dip)	2
Concept 2 Ergs	1		Bench press	1
Rogue Echo Bikes	2		Single ajustable bench	3
Rogue Woodway	1		GHD	2
Work out board option A	1		Pull up band pack	2
8mm Rubber roll	1		Jump ropes	6
Rogue Crash matts	2		Weight storage V2	6
Rogue Yoga mats	6		Rogue nine barbell holder	1
Monster Rack	1		30 tier mass storage 70"	1
Rogue Wood Rings	2		3 tier mass storage 43"	1
Ohio Bars	6		Titan cable machine	1
Bella Bars	2		Slam ball 30 lbs.	1
Barbell clamps	8		Slam ball 50 lbs.	1
Roggue color plates	1		Slam ball 80 lbs.	1
5 lb. plates	4		Slam ball 100 lbs.	1
Kettle bells	1		Weight belts	1
Dumbbells	1		Rogue timer	1
Push Sled	1		Rogue Dumbell storage	1

Medicine balls 20lbs.	4	42-inch heavy-duty fan	1
Medicine balls 14lbs.	2	JBL Party Box	1
Rogue sand bag	2	Samsung 50" TV	1
Ab mat box jumps (logos)	4	6 Cu Fridge	1
Ab matts	6		

In order to best optimize the layout of the physical fitness space and equipment we are proposing to work with professional gym design services, which is a free service provided by most equipment providers. Below is the proposed layout from Gronk Fitness as an example:



Proposed physical fitness area layout (as suggested by vendor Gronk Fitness)

At this time the three bids have been requested but have not yet been received back. There may be some smaller items that will need to be purchased outside of a particular vendor agreement. The total cost of fitting out the proposed physical fitness space is expected to be the next step of this process with the trustees when that information is available for negotiation.

We would like to thank the trustees for considering funding this effort with the Renouf Funds as an investment well spent on firefighter health and injury prevention for the City. We look forward to working on the next steps with the City and the trustees.

Signed,

Bradford Keay, on behalf of the Keene Fire Wellness Committee

City of Keene
NEW HAMPSHIRE

TRUSTEES OF TRUST FUNDS
MEETING MINUTES

Wednesday, January 15, 2025 9:30 AM City Hall-3rd Floor Conference Room

Members Present:

Martha Curtis
Marilyn Gemmell
Michelle Howard
Allen Mendelson

Staff Present:

Sherry Miller, Senior Staff Accountant

Absent:

Malcolm Katz

Other:

Eric Jussaume – Cambridge Trust
Lisa Tourangeau – Cambridge Trust

Chair Curtis called the meeting to order at 9:30 AM with Trustees Curtis, Gemmell, Howard, and Mendelson present.

Election of Chair and Vice Chair

Chair Curtis asked the Trustees for the annual nomination for Chair and Vice Chair. After brief discussion.

Trustee Curtis made a motion to have the Chair and Vice Chair remain as is, Trustee Mendelson seconded. Motion carried unanimously.

Chair Curtis suggested a change in the agenda items to allow Cambridge Trust to present before the approval of minutes. All agreed.

PORTFOLIO REVIEW WITH CAMBRIDGE TRUST

Chair Curtis welcomed Eric Jussaume, Cambridge Trust, Sr Vice President and Lisa Tourangeau, Cambridge Trust, Relationship Manager. Trustee Mendelson asked for a brief introduction.

The Common Trust portfolio had YTD returns of 12.31% with market value of \$14,156,287 as of December 31, 2024.

The Capital Reserve portfolio market value as of December 31 2024, was \$17,521,374 and a YTD return of 4.46%. Currently, the portfolio is 84.8% invested in a laddered portfolio with an average maturity of 2.32 years. This allows the City to maximize income but also meet capital project cash flow needs. Chair Curtis asked what projects were anticipated in 2025, and if adequate funds would be available. S. Miller will research.

Eric Jussaume and Lisa Tourangeau from Cambridge Trust Company left the meeting at 10:00 AM upon completion of the portfolio presentation.

APPROVAL OF MINUTES

Trustee Howard made a motion to approve the minutes of the December 18, 2024, meeting as presented, Trustee Gemmell seconded. Motion carried unanimously.

COMMON TRUST FUNDS

APPROVAL FOR USE OF FUNDS –

Chair Curtis presented a request from Cara Fisk-Hennessey, Parks & Recreation Director to purchase 54 pins for 27 lots within Monadnock View Cemetery for a total cost of \$555.77.

Trustee Howard made a motion to approve the request as presented. Trustee Mendelson seconded. Motion carried unanimously.

RECEIPTS

#968 / #974 Cemetery Lot Sales

Chair Curtis presented \$3,600.00 receipts for cemetery lot sales received through December 31, 2024: with \$1,800.00 for #968 Cemetery Trust A – Perpetual Care of Cemeteries, and \$1,800.00 for #974 Cemetery Trust Fund B – Cemetery Capital Reserves.

Trustee Howard made a motion to approve the receipts as presented. Trustee Gemmell seconded. Motion carried unanimously.

DISBURSEMENTS

#936 Ashuelot River Park Trust

Chair Curtis presented a disbursement in the amount of \$357.12 to reimburse the City of Keene for payments made to Dian Mathews (\$217.12) and Gemgraphics (\$140.00). Supporting documents were included for the Trustees review.

#908 Police Benevolent Fund

Chair Curtis presented a disbursement in the amount of \$1,000.00 for the annual (FY25) contribution for gymnasium maintenance and equipment replacement. Supporting documents were included for the Trustees review.

Trustee Gemmell made a motion to approve the disbursements as presented, Trustee Howard seconded. Motion carried unanimously.

CAPITAL RESERVES

RECEIPTS

None.

DISBURSEMENTS

Chair Curtis presented disbursements totaling \$84,092.46 noting that the funds are reimbursing the City of Keene for the period December 1, 2024 – December 31, 2024. Supporting documentation was presented for the Trustees review.

- #800 Ambulance Fund = \$34,259.90
- #810 Downtown Infrastructure and Facility = \$644.81
- #812 Transportation Improvement = \$27,531.10
- #822 Parks & Facilities Infrastructure = \$420.00
- #830 Martel Court Pumping Station = \$2,598.55
- #834 Sewer Infrastructure = \$16,718.60
- #842 Water Infrastructure = \$1,919.50

Trustee Mendelson made a motion to approve the disbursements as presented. Trustee Howard seconded. Motion carried unanimously.

DISTRIBUTION OF MS9S

Chair Curtis asked if there were any questions on the MS9 reports for the Common Trust and Capital Reserves for the period ending December 31, 2024. No questions were asked.

UPDATES/FUTURE ITEMS

Periodic review of the Trusts and Capital Reserve by Cambridge Trust will be according to the following schedule:

- April 2025 –TBA Video presentation
- July 2025 –TBA in person presentation

S. Miller reminded the Trustees that she will be away the week that the January MS9 reports come in and there will not be adequate time to prepare disbursements for the February meeting, as she will be returning February 19th.

A review of the Trust Fund documents was tabled for a future meeting.

The meeting adjourned at 10:57 AM.

Respectfully submitted,
Sherry Miller

**City of Keene, New Hampshire Trust Funds
Disbursement Request - FROM INCOME**

Date: 2/19/2025
To: Trustees of Trust Funds
From: Sherry Miller, Senior Staff Accountant
RE: Disbursement Request from Income

Trust #	Title of Trust	Purpose	Amount
906	Clement J Woodward	Dental Health Works	2,310.00
		W2024-04 = \$2,310.00	
		Approved by Woodward Committee at	
		01/17/2025 meeting	
Total Withdrawal Request			2,310.00

**Amount of
Withdrawal:** \$2,310.00

**Account to be
Charged:** City of Keene - Common Fund #4482

Payable To: Dental Health Works
69 V Island Street
Keene, NH 03431

Note: Please mail check to: City of Keene, Attn: Sherry Miller

Approved By Trustees:

X _____

X _____

X _____

X _____

X _____

Woodward Fund Committee
Keene, New Hampshire

To: Trustees of the Clement Woodward Trust
From: Woodward Fund Committee
Through: Sherry Miller, Fund Manager, Finance Dept.
Re: Woodward Fund Request for Disbursements

Woodward Fund Committee met on January 17, 2025. The Committee recommends the following Keene resident for assistance from the Clement Woodward Trust Fund. This is part of a previously approved amount dedicated to Dental Health Works.

Approved by WF Committee CMC DHK * Other Total

W-2024-04			Dental Health Works	\$2310.00
Total				\$2310.00

Respectfully submitted,



Natalie J. Darcy
Human Services Manager
City of Keene

Woodward Fund Committee

Agenda

NON-CONFIDENTIAL

1/17/25

- **Members Present:** Natalie Darcy, Amy Lawliss
- **Meeting Called to Order:** 2:30pm

- **Minutes of meeting: 10/30/24** – Approved

- **Financial Report** – as of 12/31/24 the amount in the Trust is as follows:
Principal: **\$1,231,205.87** Interest Income: **\$224,357.67** for a total of **\$1,455,563.54**

- **Old Business:**
 - W-2024-02** - Use of funds for dentures in complete in the amount of **\$2146.00**. **\$12,854.00** remaining for use of funds for Dental Health Works.
 - W-2024-03** – Waiting on estimate
 - W-2024-04** – Received estimate in the amount of \$2310.00 for dentures. Is discounted by 30% by Dental Health Works. Committee approved. Request for payment submitted to the Trustees.
 - W-2024-05** – Received invoice from Cheshire Medical Center in the amount of \$475.00. Did not apply for financial assistance from Dartmouth Health Financial Services. Request denied.

- **New Business:**
 - W-2025-01** - Received estimate from Connecticut Valley Oral Surgery Associates in the amount of \$4634.00

- **Adjournment:** 3:30PM
- **Next Meeting scheduled for 2/20/25**
- **Submitted by Natalie Darcy**

**City of Keene, New Hampshire Trust Funds
Disbursement Request - FROM INCOME**

Date: 3/19/2025
To: Trustees of Trust Funds
From: Sherry Miller, Senior Staff Accountant
RE: Disbursement Request from Income

Trust #	Title of Trust	Purpose	Amount
974	Cemetery Trust B -	Move and Reset Markers- reimburse	90.00
	Capital Reserve	City of Keene	
		Payment to Peterborough Marble and Granite	
		Trustees approved 3/1/25 - project 65J0016D	
Total Withdrawal Request			90.00

**Amount of
Withdrawal:** \$90.00

**Account to be
Charged:** City of Keene - Common Fund

ACH Funds To: Mascoma Bank

Approved By Trustees:

X _____
 X _____
 X _____
 X _____
 X _____

PROJECT BUDGET REPORT

FOR 12/01/2024 - 02/28/2025

Original Budget	Net Budget Amendments	Revised Budget	Requisitions	Encumbrances	Actuals	Available Budget	Percent Used
PROJECT: 65J0016D - CAMPO SANTO MARKERS							
F 65J0016D -300	-L -472100	TRUST FUNDS					
-1,680.00	0.00	-1,680.00	0.00	0.00	0.00	-1,680.00	0.00%
E 65J0016D -300	-0	PROFESSIONAL SERVICES				-90.00	0.00%
0.00	0.00	0.00	0.00	0.00	90.00	0.00	0.00%
EFF DATE	JNL	LINE	SRC	REF1	REF2	REF3	GL
02/04/2025	17	1	API	017092		43357	2025/08
3480					MOVE & RESET MARKERS	CAMPO SAN	PETERBOROUGH MARBLE
E 65J0016D -300	-0	-523500	MAINT-BUILDING			1,680.00	0.00%
1,680.00	0.00	1,680.00	0.00	0.00	0.00	1,680.00	0.00%
FUNDING SOURCE TOTALS for Project: 65J0016D - CAMPO SANTO MARKERS							
-1,680.00	0.00	-1,680.00	0.00	0.00	0.00	-1,680.00	0.00%
EXPENSE TOTALS for Project: 65J0016D - CAMPO SANTO MARKERS							
1,680.00	0.00	1,680.00	0.00	0.00	90.00	1,590.00	5.36%
TOTALS for PROJECT: 65J0016D - CAMPO SANTO MARKERS	0.00	0.00	0.00	0.00	90.00	-90.00	
0.00	0.00	0.00	0.00	0.00	90.00		
EXPENSE TOTALS for Major Project: 65J0016 - CEMETERY IMPROVEMENTS							
1,680.00	0.00	1,680.00	0.00	0.00	90.00	1,590.00	5.36%
FUNDING SOURCE TOTALS for Major Project: 65J0016 - CEMETERY IMPROVEMENTS	0.00	0.00	0.00	0.00	0.00	-1,680.00	0.00%
-1,680.00	0.00	-1,680.00	0.00	0.00	0.00	-90.00	
TOTALS for Major Project: 65J0016 - CEMETERY IMPROVEMENTS	0.00	0.00	0.00	0.00	90.00	-90.00	
0.00	0.00	0.00	0.00	0.00	90.00		
TOTALS FOR FUNDING SOURCE STRINGS							
-1,680.00	0.00	-1,680.00	0.00	0.00	0.00	0.00	-1,680.00
TOTALS FOR EXPENSE STRINGS	0.00	0.00	0.00	0.00	0.00	90.00	1,590.00
1,680.00	0.00	1,680.00	0.00	0.00	0.00		
REPORT TOTAL							
Original Budget	Net Budget Amendments	Revised Budget	Requisitions	Encumbrances	Actuals	Available Budget	Percent Used
0.00	0.00	0.00	0.00	0.00	90.00	-90.00	

PROJECT BUDGET REPORT

FOR 12/01/2024 - 02/28/2025

Original Budget	Net Budget Amendments	Revised Budget	Requisitions	Encumbrances	Actuals	Available Budget	Percent Used				
PROJECT: 65M00224 - 2024 ASHUELOT RIVER PARK											
F 65M00224	-300	-472100									
	-19,054.00	-19,054.00	0.00	0.00	-357.12	-18,696.88	1.87%				
EFF DATE	JNL	LINE	SRC	REF1	REF2	REF3	AMOUNT	D/C	GLY/PPF	GLJn]	GLLine
01/17/2025	69	1	GEN				357.12	C	2025/07	412	2
15M11725	JAN25 Trust Income WD Ashuelot										
E 65M00224	-300	-523400									
	-19,054.00	-19,054.00	0.00	0.00	0.00	0.00	0.00	0.00	19,054.00		0.00%
E 65M00224	-300	-523700									
	0.00	0.00	0.00	0.00	0.00	0.00	2,040.00	D	2025/06	479	1
EFF DATE	JNL	LINE	SRC	REF1	REF2	REF3	AMOUNT	D/C	GLY/PPF	GLJn]	GLLine
12/16/2024	92	1	API	006074	41293		140.00	D	2025/06	479	1
3288	KIF EVENT SCHEDULE										
01/10/2025	63	7	API	018159	42297		1,900.00	D	2025/07	338	16
3383	ASHUELOT PARK CLEANUP MARK JOHNSON										
FUNDING SOURCE TOTALS for Project: 65M00224 - 2024 ASHUELOT RIVER PARK											
							0.00				
							-357.12		-18,696.88		1.87%
EXPENSE TOTALS for Project: 65M00224 - 2024 ASHUELOT RIVER PARK											
							0.00				
							2,040.00		17,014.00		10.71%
TOTALS for PROJECT: 65M00224 - 2024 ASHUELOT RIVER PARK											
							1,682.88		-1,682.88		
EXPENSE TOTALS for Major Project: 65M002 - ASHUELOT RIVER PARK											
							0.00				
							2,040.00		17,014.00		10.71%
FUNDING SOURCE TOTALS for Major Project: 65M002 - ASHUELOT RIVER PARK											
							0.00				
							-357.12		-18,696.88		1.87%
TOTALS for Major Project: 65M002 - ASHUELOT RIVER PARK											
							1,682.88		-1,682.88		
TOTALS FOR FUNDING SOURCE STRINGS											
							0.00		-19,054.00		
TOTALS FOR EXPENSE STRINGS											
							0.00		19,054.00		
REPORT TOTAL											
	Original Budget	Net Budget Amendments	Revised Budget	Requisitions	Encumbrances	Actuals	Available Budget	Percent Used			

**City of Keene, New Hampshire Trust Funds
Withdrawal from Capital Reserves**

Date: 3/19/2025
To: Trustees of Trust Funds
From: Sherry Miller, Senior Staff Accountant
RE: Capital Reserve Withdrawals

Capital Reserve	Purpose of Withdrawal		Amount
#800 Ambulance			32,330.94
40M0002B	Ambulance Replacement Fund	32,330.94	
#802 Fire Equipment			57,844.62
40M00423	Downtown Revitalization	57,844.62	
#812 Transportation Improvement			16,840.63
65M0008A	Transportation Heritage Trail	16,840.63	
#834 Sewer Infrastructure			178,738.48
32MI0222	FY22 Sewer Imp-Force Main Design	24,637.74	
32MI0423	FY23 Sewer Main Lining	154,100.74	
#842 Water Infrastructure			27,639.38
34MI0625	FY25 Water Valve Replacement	27,639.38	
Total Withdrawal Request			313,394.05

**Amount of
Withdrawal:** \$313,394.05

**Account to be
Charged:** City of Keene - Capital Reserve Fund

ACH Funds To: Mascoma Bank

Approved By Trustees:

X _____
 X _____
 X _____
 X _____
 X _____

CITY OF KEENE, NH
 REPORT OF THE TRUSTEES OF TRUST FUNDS
 CAPITAL RESERVE (ACCOUNT NUMBER 3004444)
 FOR YEAR ENDING: 06/30/2025
 AS OF: 01/31/2025

FUND NAME	FUND #	PURPOSE	HOW INVESTED	DATE OF CREATION	PRINCIPAL				INCOME				TOTAL COST PRINCIPAL & INCOME						
					COST OPENING BALANCE	PRINCIPAL NEW FUNDS	%	PRINCIPAL REALIZED GAINS	CAPITAL DIVIDENDS	PRINCIPAL FEES	PRINCIPAL WITHDRAWALS	PRINCIPAL ENDING COST BALANCE		PRINCIPAL ENDING FAIR VALUE	INCOME BEGIN BALANCE	INCOME PERCENT	INCOME	INCOME EXPENDED	INCOME ENDING BALANCE
Amulance Capital Reserve	800	Police/Fire	Common Investment	11/10/06	168,282.33	0.00	0.837425%	0.00	0.00	0.00	(34,258.89)	164,540.00	163,051.29	428.85	0.00	0.937405%	0.00	0.00	184,540.00
Bridge Capital Reserve	808	Maintenance and Repair	Common Investment	11/20/02	1,776,091.26	0.00	10.144446%	0.00	0.00	0.00	0.00	1,780,876.25	1,784,469.50	4,519.89	0.00	10.144446%	0.00	0.00	1,780,876.25
City Hall Parking Deck Capital Reserve	850	Maintenance and Repair	Common Investment	11/19/00	256,008.57	0.00	1.487402%	0.00	0.00	0.00	0.00	257,576.42	265,221.61	897.85	0.00	1.487402%	0.00	0.00	257,576.42
Downtown Infrastructure and Facility Capital Reserve	810	Economic Development	Common Investment	11/20/08	1,840,025.89	0.00	10.505452%	0.00	0.00	0.00	(844.81)	1,844,794.03	1,827,871.84	4,783.15	0.00	10.505452%	0.00	0.00	1,844,794.03
Emergency Communication Capital Reserve	816	Capital Reserve (Other)	Common Investment	5/7/2020	5,452.75	0.00	0.031145%	0.00	0.00	0.00	0.00	5,489.92	5,417.16	14.17	0.00	0.031145%	0.00	0.00	5,489.92
Fire Equipment Capital Reserve	802	Police/Fire	Common Investment	11/10/08	726,895.79	0.00	4.150506%	0.00	0.00	0.00	0.00	728,554.81	721,685.31	1,899.02	0.00	4.150506%	0.00	0.00	728,554.81
Fire Equipment Capital Reserve	802	Maintenance and Repair	Common Investment	11/19/08	273,278.91	0.00	1.560906%	0.00	0.00	0.00	0.00	273,889.32	271,685.31	770.41	0.00	1.560906%	0.00	0.00	273,889.32
Hazardous Waste Site Capital Reserve	870	Environmental Purpose	Common Investment	11/19/89	54,733.45	0.00	0.312825%	0.00	0.00	0.00	0.00	54,876.76	54,276.22	1.82	0.00	0.312825%	0.00	0.00	54,876.76
Information Technology Systems and Infrastructure Capital Reserve	820	Capital Reserve (Other)	Common Investment	5/7/2020	153,073.21	0.00	0.874319%	0.00	0.00	0.00	0.00	152,074.15	152,471.13	397.82	0.00	0.874319%	0.00	0.00	153,073.21
Intersection Improvements Capital Reserve	804	Economic Development	Common Investment	11/10/09	2,154.19	0.00	0.012304%	0.00	0.00	0.00	0.00	2,159.79	2,140.13	5.00	0.00	0.012304%	0.00	0.00	2,159.79
Landfill Closure Capital Reserve	874	Environmental Purpose	Common Investment	11/19/00	23,896.97	0.00	0.138437%	0.00	0.00	0.00	0.00	23,949.07	23,937.07	62.10	0.00	0.138437%	0.00	0.00	23,949.07
Marine Court Pumping Station Capital Reserve	830	Maintenance and Repair	Common Investment	11/19/02	299,417.88	0.00	1.652933%	0.00	0.00	0.00	(2,566.55)	296,557.32	295,048.84	742.89	0.00	1.652933%	0.00	0.00	296,557.32
Marine and Facilities Infrastructure Fund	822	Public/Recreation	Common Investment	5/16/2022	829,897.23	0.00	4.726583%	0.00	0.00	0.00	(420.65)	828,516.96	821,073.16	2,148.46	0.00	4.726583%	0.00	0.00	828,516.96
Neapstead Capital Reserve	818	Capital Reserve (Other)	Common Investment	5/7/2020	723,221.97	0.00	0.713688%	0.00	0.00	0.00	0.00	725,847.45	724,503.74	325.78	0.00	0.713688%	0.00	0.00	725,847.45
Road and Sidewalk Infrastructure Capital Reserve	814	Maintenance and Repair	Common Investment	5/7/2020	7,899,854.84	0.00	39.988824%	0.00	0.00	0.00	0.00	7,924,741.38	7,917,664.51	1,659.81	0.00	39.988824%	0.00	0.00	7,924,741.38
Senior Center Capital Reserve	824	Maintenance and Repair	Common Investment	11/16/08	4,353,893.54	0.00	24.388534%	0.00	0.00	0.00	(18,718.85)	4,340,954.77	4,336,502.02	11,273.83	0.00	24.388534%	0.00	0.00	4,340,954.77
Transparency and Accountability Capital Reserve	872	Maintenance and Repair	Common Investment	11/16/08	393,893.17	0.00	2.142973%	0.00	0.00	0.00	0.00	395,891.08	388,000.00	6,932.57	0.00	2.142973%	0.00	0.00	395,893.17
Transparency and Accountability Capital Reserve	872	Maintenance and Repair	Common Investment	11/20/15	378,422.93	0.00	2.042134%	0.00	0.00	0.00	(37,591.10)	340,831.00	348,891.08	9,060.08	0.00	2.042134%	0.00	0.00	348,891.08
Washburne Treatment Plant Capital Reserve	832	Maintenance and Repair	Common Investment	11/16/88	1,844,278.12	0.00	10.594833%	0.00	0.00	0.00	0.00	1,846,079.48	1,832,241.13	4,704.32	0.00	10.594833%	0.00	0.00	1,846,079.48
Water Infrastructure Capital Reserve	842	Maintenance and Repair	Common Investment	11/16/88	2,383,833.45	0.00	13.480735%	0.00	0.00	0.00	(1,910.50)	2,386,053.89	2,349,684.62	6,179.06	0.00	13.480735%	0.00	0.00	2,386,053.89
Water Treatment Facility Capital Reserve	840	Maintenance and Repair	Common Investment	11/16/83	529,841.87	0.00	3.580815%	0.00	0.00	0.00	0.00	531,579.45	525,800.45	1,897.58	0.00	3.580815%	0.00	0.00	531,579.45
Wells Street Parking Facility Capital Reserve	852	Maintenance and Repair	Common Investment	11/10/00	385,374.08	0.00	2.089032%	0.00	0.00	0.00	0.00	386,329.87	382,880.38	949.81	0.00	2.089032%	0.00	0.00	386,329.87
TOTALS					17,591,109.82	0.00	100.000000%	0.00	0.00	0.00	(84,032.46)	17,553,226.83	17,333,449.33	46,812.47	0.00	100.000000%	0.00	0.00	17,553,226.83

CITY OF KEENE, NH
 REPORT OF THE TRUSTEES OF TRUST FUNDS
 COMMON TRUST FUND (ACCOUNT NUMBER XXX4482)
 FOR YEAR ENDING: 06/30/2025
 AS OF: 03/14/2025

FUND #	FUND NAME	DATE OF CREATION	PURPOSE	PRINCIPAL BEGIN MARKET VALUE	PRINCIPAL										INCOME					TOTAL COST PRINCIPAL & INCOME	TOTAL MARKET VALUE PRINCIPAL & INCOME
					PRINCIPAL BEGIN COST BALANCE	PRINCIPAL NEW FUNDS	PRINCIPAL UNREALIZED GAIN/LOSS	PRINCIPAL REALIZED GAIN/LOSS	CAPITAL GAINS DIVIDENDS *	PRINCIPAL FEES	PRINCIPAL WITHDRAWALS	PRINCIPAL ENDING COST BALANCE	PRINCIPAL ENDING MARKET VALUE	INCOME BEGIN BALANCE	INCOME	INCOME FEES	INCOME EXPENDED	INCOME ENDING BALANCE			
928	Abbott A. Lane Park Fund	1/1/1954	Park/Recreation	96,481.96	73,140.71	0.00	712.28	436.62	0.00	0.00	72,877.33	97,164.28	3,245.45	128.84	(82.21)	0.00	3,319.88	75,897.21	100,514.16		
930	Abbott A. Lane Playground Fund	1/1/1954	Park/Recreation	18,741.10	14,008.41	0.00	188.37	1,241.10	0.00	0.00	14,008.41	18,979.47	629.88	24.97	(10.14)	0.00	644.81	14,739.03	18,824.28		
935	Arkhead River Park Trust	1/1/1998	Park/Recreation	598,431.72	498,343.71	0.00	4,169.77	2,572.36	0.00	0.00	498,616.07	572,825.47	2,189.88	883.34	(398.54)	0.00	2,161.62	520,794.09	594,448.51		
978	Caroline Davis Trust	1/1/1959	Cemetery/Perpetual Care	16,942.72	15,447.79	0.00	118.44	72.00	0.00	0.00	15,432.39	16,161.16	2,091.61	28.51	(10.76)	0.00	2,106.78	15,627.15	18,267.92		
928	Caroline H. Ingrid	1/1/1984	Park/Recreation	6,902.69	4,930.43	0.00	4,430.43	28.71	0.00	0.00	4,430.43	5,846.51	1,987.72	7.80	(3.21)	0.00	2,031.41	15,627.15	18,267.92		
944	Caroline Ingrid	1/1/1984	Library	6,817.28	4,413.64	0.00	4,295.00	26.33	0.00	0.00	4,439.07	5,800.23	844.33	8.64	(3.50)	0.00	649.47	5,089.44	6,148.92		
954	Carrie K. Henry Trust	1/1/1974	Library	188,285.73	146,254.14	0.00	1,464.03	887.36	0.00	0.00	146,151.50	199,756.73	2,126.37	296.40	(117.87)	0.00	2,208.90	171,529.00	221,658.06		
968	Cemetery Perpetual Care	02/20/1985	Cemetery Perpetual Care	2,289,273.02	1,744,343.45	0.00	16,901.88	10,359.80	0.00	0.00	1,754,703.25	2,005,174.00	78,654.82	3,108.02	(1,261.51)	0.00	78,901.33	1,833,804.58	2,384,978.23		
974	Cemetery Trust Fund A - Cemetery Capital Reserve	8/20/1985	Maintenance and Repair	1,583,890.98	1,254,544.49	0.00	11,994.95	7,188.10	0.00	0.00	1,291,732.56	1,585,676.63	284,100.20	2,540.55	(1,031.16)	0.00	235,702.57	1,497,985.16	1,851,978.20		
914	Charles A. Jones Fund	1/1/1928	Park/Recreation	35,280.82	25,808.70	0.00	200.33	159.57	0.00	0.00	25,698.27	35,624.15	18,464.72	77.28	(31.36)	0.00	18,510.62	45,478.99	55,031.77		
952	Clare B. Abbott	1/1/1925	Library	37,745.75	20,591.28	0.00	204.85	125.56	0.00	0.00	20,666.84	27,650.60	1,464.85	37.59	(15.26)	0.00	1,487.18	22,174.02	29,637.78		
908	Clement Woodard Fund	1/1/1990	Pool/Indigent	1,380,648.28	942,591.21	0.00	9,309.72	5,704.44	0.00	0.00	849,205.65	1,295,855.00	228,410.03	1,864.78	(802.85)	0.00	227,604.14	1,175,609.76	1,497,459.14		
932	Dinahora Woods Trust	1/1/1990	Park/Recreation	7,564.87	6,903.95	0.00	84.00	33.38	0.00	0.00	6,927.13	7,409.17	247.18	9.80	(3.98)	0.00	253.00	5,960.13	7,893.17		
924	Emily J. Eliza Odell	1/1/1933	Park/Recreation	7,874.68	6,974.28	0.00	58.59	36.90	0.00	0.00	6,910.35	8,033.86	268.28	10.85	(4.33)	0.00	274.81	6,984.68	8,309.47		
964	Frank Wright Scholarship Fund	1/1/1900	Scholarship	224,806.92	169,633.59	0.00	1,683.88	1,913.71	0.00	0.00	170,617.89	226,695.78	7,559.38	303.34	(122.51)	0.00	7,739.42	177,916.02	233,394.20		
984	Frank Wright Scholarship Fund	1/1/1900	Scholarship	1,940,367.49	1,432,327.55	0.00	14,327.35	8,751.78	0.00	0.00	1,482,445.88	1,954,894.64	132,327.73	2,749.94	(1,112.52)	0.00	134,155.15	1,670,630.04	2,068,050.89		
948	George A. Wheelock	1/1/1905	Park/Recreation	82,959.38	61,720.28	0.00	669.90	373.98	0.00	0.00	62,103.86	83,162.86	2,775.25	110.09	(44.88)	0.00	2,840.66	64,444.32	86,003.54		
948	George B. Elliot	1/1/1931	Library	1,483.74	1,447.00	0.00	14.47	8.87	0.00	0.00	1,472.61	1,973.82	222.61	2.88	(1.17)	0.00	224.32	1,656.95	2,116.14		
920	George B. Elliot Fund	1/1/1931	Library	683.81	683.81	0.00	5.49	3.37	0.00	0.00	697.18	749.43	170.29	1.27	(0.51)	0.00	180.05	747.23	929.48		
990	Greenland Cemetery	1/1/1900	Cemetery Trust (Other)	720,483.55	542,709.46	0.00	5,319.38	3,280.45	0.00	0.00	546,095.94	725,805.93	24,294.04	987.72	(392.79)	0.00	24,608.97	570,918.91	750,861.90		
988	Ingrid Collection Trust	1/1/1968	Maintenance and Repair	17,144.14	15,179.16	0.00	128.58	77.50	0.00	0.00	15,297.74	17,270.72	34.63	0.00	(0.00)	0.00	34.63	15,297.74	22,546.18		
972	John E. Colony Cemetery Fund	02/28/1946	Cemetery Perpetual Care	34,107.27	27,875.23	0.00	251.82	154.35	0.00	0.00	28,026.58	34,350.09	14,222.21	71.84	(29.16)	0.00	14,294.86	42,304.47	48,823.88		
940	John Synonds Fund	1/1/1902	Library	31,543.81	14,468.36	0.00	232.89	142.75	0.00	0.00	14,641.11	31,776.50	2,097.80	28.26	(11.47)	0.00	2,084.59	16,256.70	33,861.08		
956	John T. Foster Library Trust	1/1/2003	Library	24,377.94	19,464.59	0.00	178.88	110.32	0.00	0.00	19,640.41	24,857.82	1,729.67	38.22	(14.70)	0.00	1,751.18	21,936.10	26,306.11		
924	Keene Downtown Memorial Tree Fund	1/1/1907	Beautification	478,439.73	385,099.24	0.00	3,932.36	2,105.12	0.00	0.00	387,263.36	481,972.09	16,497.84	885.32	(278.16)	0.00	18,605.00	464,186.36	688,877.09		
982	Mecus W. Knight	1/1/1932	Maintenance and Repair	246,976.67	198,914.59	0.00	1,823.47	1,117.87	0.00	0.00	197,632.25	248,803.14	14,732.60	361.00	(148.53)	0.00	14,817.07	212,679.32	263,750.21		
916	Meia Griffin Fund	1/1/1914	Pool/Indigent	7,193.97	5,965.27	0.00	52.90	32.44	0.00	0.00	5,937.51	7,221.90	1,732.15	12.12	(4.82)	0.00	1,739.35	7,197.06	8,981.25		
950	Meia W. Osborns Library Fund	1/1/1906	Library	987.34	726.13	0.00	7.14	4.38	0.00	0.00	730.51	974.48	184.98	1.52	(0.69)	0.00	169.85	808.39	1,140.35		
904	Mary P. Lane Trust Fund	1/1/1904	Pool/Indigent	115,453.28	88,369.18	0.00	852.25	522.38	0.00	0.00	86,823.56	115,285.53	3,850.46	153.99	(62.46)	0.00	3,971.83	90,704.39	120,927.36		
902	Mary R. Hall Charitable Fund	1/1/1907	Pool/Indigent	35,020.72	20,661.28	0.00	262.89	161.20	0.00	0.00	20,822.48	35,885.71	1,197.85	47.55	(18.20)	0.00	1,226.13	28,048.81	37,108.84		
948	Mary R. Hall Charitable Fund	1/1/1907	Library	2,690.09	2,196.07	0.00	21.70	13.30	0.00	0.00	2,208.37	3,246.79	327.84	4.30	(1.75)	0.00	339.39	2,839.78	3,291.16		
989	Maurice Alger Scholarship Fund	1/1/1970	Scholarship	346,300.11	262,202.85	0.00	2,172.19	1,275.99	0.00	0.00	263,778.44	350,352.30	7,406.99	480.24	(188.81)	0.00	7,772.12	271,351.56	388,734.42		
912	Milan F. Jones Fund	1/1/1934	Pool/Indigent	14,576.81	10,886.64	0.00	107.90	69.95	0.00	0.00	10,902.59	14,881.41	489.91	19.43	(7.89)	0.00	191.46	11,464.04	15,162.86		
908	Miscellaneous Cemeteries	1/1/1900	Cemetery Trust (Other)	46,091.57	34,208.48	0.00	344.73	211.30	0.00	0.00	34,419.78	47,038.30	1,558.89	61.04	(24.77)	0.00	1,594.86	36,014.74	48,631.26		
908	Police Benevolent Fund	1/1/1901	Police/Fire	327,129.27	228,801.46	0.00	2,415.22	1,460.88	0.00	0.00	229,881.84	329,544.48	78,560.13	524.04	(212.70)	0.00	78,981.47	301,873.31	408,435.96		
910	Police/Fire	1/1/1888	Police/Fire	181,811.52	120,702.54	0.00	1,340.85	821.86	0.00	0.00	121,584.40	142,853.37	132,778.30	432.86	(175.91)	0.00	133,033.35	254,817.75	315,895.72		
918	Renov Firefighters Relief Fund	1/1/1929	Police/Fire	43,879.56	34,386.48	0.00	323.82	198.54	0.00	0.00	34,584.03	44,197.48	8,005.17	72.31	(29.35)	0.00	8,048.13	35,419.19	52,245.61		
900	Simons, Eastburn & Morse	1/1/1887	Pool/Indigent	32,827.53	17,887.65	0.00	174.44	108.82	0.00	0.00	17,774.52	23,801.87	794.28	31.50	(12.79)	0.00	814.98	18,587.56	24,814.98		
900	Summer Knight Chapel	1/1/1900	Maintenance and Repair	38,278.00	27,441.48	0.00	287.85	184.18	0.00	0.00	27,005.69	36,548.78	2,144.22	50.49	(20.46)	0.00	2,174.22	28,776.88	38,721.00		
942	Thayer and Chain Fund	1/1/1900	Library	66,657.69	72,281.40	0.00	713.85	437.55	0.00	0.00	72,705.69	97,401.74	10,851.09	141.59	(57.47)	0.00	10,775.21	83,464.16	108,176.55		
984	Washington Street Cemetery	1/1/1900	Cemetery Trust (Other)	13,717.82	10,291.60	0.00	101.28	62.08	0.00	0.00	10,313.74	13,816.00	461.07	18.27	(7.42)	0.00	471.92	10,785.06	14,200.92		
992	West Keene Cemetery	1/1/1900	Cemetery Trust (Other)	74,376.00	55,909.54	0.00	549.15	338.59	0.00	0.00	56,046.13	74,026.05	2,500.31	99.16	(40.26)	0.00	2,599.22	58,505.35	77,467.27		
976	Woodland Cemetery	1/1/1900	Cemetery Trust (Other)	1,151,944.70	859,907.45	0.00	8,904.89	5,212.97	0.00	0.00	861,120.42	1,160,446.59	36,640.89	1,528.63	(919.80)	0.00	39,547.82	900,686.24	1,190,997.41		
958	Woodland Extension	1/1/1900	Cemetery Trust (Other)	645,935.47	651,809.81	0.00	6,245.80	3,828.17	0.00	0.00	653,838.08	852,181.07	28,426.86	1,128.86	(457.31)	0.00	28,096.34	584,754.42	881,277.41		
TOTALS				13,391,725.40	10,143,833.05	0.00	98,133.81	60,148.98	0.00	0.00	10,203,802.96	43,389,863.21	1,150,761.48	19,273.77	(7,823.05)	0.00	1,162,192.23	11,386,016.22	14,592,075.44		

Income Allocated to Principal for Investment
 Balance on Cambridge Trust Company

(449,392.89)
 712,819.54

CITY OF KEENE, NH
 REPORT OF THE TRUSTEES OF TRUST FUNDS
 CAPITAL RESERVE (ACCOUNT NUMBER XXX4474)
 FOR YEAR ENDING: 06/30/2023
 AS OF: 02/28/2025

FUND NAME	FUND #	PURPOSE	DATE OF CREATION	PRINCIPAL										INCOME					
				COST OPENING BALANCE	PRINCIPAL NEW FUNDS	PRINCIPAL REALIZED GAINS	CAPITAL GAINS DIVIDENDS	PRINCIPAL FEES	PRINCIPAL WITHDRAWALS	PRINCIPAL ENDING COST BALANCE	PRINCIPAL ENDING FAIR VALUE	INCOME BEGIN BALANCE	INCOME	INCOME FEES	INCOME EXPENDED	INCOME ENDING BALANCE	TOTAL COST PRINCIPAL & INCOME		
Ambulance Capital Reserve	800	Police/Fire	1/1/1988	164,549.08	0.00	0.00	0.00	0.00	0.00	0.00	0.00	164,549.08	163,674.88	0.00	117.48	0.00	0.00	0.00	164,686.56
Bridge Capital Reserve	801	Maintenance and Repair	1/1/2002	1,760,978.25	0.00	0.00	0.00	0.00	0.00	0.00	0.00	1,761,949.53	1,771,217.97	0.00	1,271.28	0.00	0.00	0.00	1,781,949.53
City Hall Parking Deck Capital Reserve	850	Maintenance and Repair	1/1/1989	297,576.42	0.00	0.00	0.00	0.00	0.00	0.00	0.00	297,780.31	296,207.86	0.00	183.89	0.00	0.00	0.00	297,780.31
Downtown Infrastructure and Facility Capital Reserve	810	Economic Development	1/1/2008	1,844,784.03	0.00	0.00	0.00	0.00	0.00	0.00	0.00	1,846,081.06	1,834,063.28	0.00	1,317.03	0.00	0.00	0.00	1,846,081.06
Emergency Communication Capital Reserve	816	Capital Reserve (Other)	5/7/2020	5,469.92	0.00	0.00	0.00	0.00	0.00	0.00	0.00	5,470.82	5,437.87	0.00	3.90	0.00	0.00	0.00	5,470.82
Fire Equipment Capital Reserve	802	Police/Fire	1/1/1988	728,554.81	0.00	0.00	0.00	0.00	0.00	0.00	0.00	728,074.95	724,884.19	0.00	520.14	0.00	0.00	0.00	728,074.95
Fleet Equipment Capital Reserve	890	Maintenance and Repair	1/1/1988	273,989.32	0.00	0.00	0.00	0.00	0.00	0.00	0.00	274,184.93	272,593.99	0.00	195.61	0.00	0.00	0.00	274,184.93
Hazardous Waste Site Capital Reserve	870	Environmental Purposes	1/1/1988	54,975.73	0.00	0.00	0.00	0.00	0.00	0.00	0.00	54,914.91	54,584.19	0.00	39.18	0.00	0.00	0.00	54,914.91
Information Technology Systems and Infrastructure Capital Reserve	820	Capital Reserve (Other)	5/7/2020	153,471.13	0.00	0.00	0.00	0.00	0.00	0.00	0.00	153,580.70	152,655.78	0.00	106.67	0.00	0.00	0.00	153,580.70
Intersection Improvements Capital Reserve	804	Economic Development	1/1/1988	2,159.79	0.00	0.00	0.00	0.00	0.00	0.00	0.00	2,161.33	2,148.31	0.00	1.54	0.00	0.00	0.00	2,161.33
Landfill Closure Capital Reserve	874	Environmental Purposes	1/1/1980	23,949.07	0.00	0.00	0.00	0.00	0.00	0.00	0.00	23,986.17	23,821.84	0.00	17.10	0.00	0.00	0.00	23,986.17
Marié Court Pumping Station Capital Reserve	830	Maintenance and Repair	1/1/1982	286,357.32	0.00	0.00	0.00	0.00	0.00	0.00	0.00	286,761.90	285,034.91	0.00	204.36	0.00	0.00	0.00	286,761.90
Parks and Facilities Infrastructure Fund	822	Parks/Recreation	5/19/2022	828,615.89	0.00	0.00	0.00	0.00	0.00	0.00	0.00	829,207.26	824,213.47	0.00	591.57	0.00	0.00	0.00	829,207.26
Reappraisal Capital Reserve	818	Capital Reserve (Other)	5/7/2020	125,647.45	0.00	0.00	0.00	0.00	0.00	0.00	0.00	125,737.15	124,976.81	0.00	89.70	0.00	0.00	0.00	125,737.15
Road and Sidewalk Infrastructure Capital Reserve	814	Maintenance and Repair	5/7/2020	713,741.39	0.00	0.00	0.00	0.00	0.00	0.00	0.00	714,250.95	709,949.47	0.00	509.99	0.00	0.00	0.00	714,250.95
Sewer Infrastructure Capital Reserve	834	Maintenance and Repair	1/1/1988	4,348,084.77	0.00	0.00	0.00	0.00	0.00	0.00	0.00	4,351,169.01	4,324,984.55	0.00	3,104.24	0.00	0.00	0.00	4,351,169.01
Transfer/Recycling Center Capital Reserve	872	Maintenance and Repair	1/1/1988	393,714.00	0.00	0.00	0.00	0.00	0.00	0.00	0.00	393,985.08	391,622.30	0.00	281.08	0.00	0.00	0.00	393,985.08
Transportation Improvements Capital Reserve	812	Maintenance and Repair	1/1/2015	351,804.00	0.00	0.00	0.00	0.00	0.00	0.00	0.00	352,065.16	346,934.95	0.00	251.16	0.00	0.00	0.00	352,065.16
Wastewater Treatment Plant Capital Reserve	832	Maintenance and Repair	1/1/1982	1,849,072.44	0.00	0.00	0.00	0.00	0.00	0.00	0.00	1,850,392.58	1,839,248.80	0.00	1,320.11	0.00	0.00	0.00	1,850,392.58
Water Infrastructure Capital Reserve	842	Maintenance and Repair	1/1/1988	2,398,053.90	0.00	0.00	0.00	0.00	0.00	0.00	0.00	2,395,473.04	2,355,473.04	0.00	1,690.62	0.00	0.00	0.00	2,399,744.52
Water Treatment Facility Capital Reserve	840	Maintenance and Repair	1/1/1983	631,579.45	0.00	0.00	0.00	0.00	0.00	0.00	0.00	632,030.35	626,224.03	0.00	450.90	0.00	0.00	0.00	632,030.35
Wells Street Parking Facility Capital Reserve	852	Maintenance and Repair	1/1/1989	396,223.87	0.00	0.00	0.00	0.00	0.00	0.00	0.00	396,585.40	394,377.89	0.00	281.53	0.00	0.00	0.00	396,585.40
TOTALS				17,553,228.83	0.00	0.00	0.00	0.00	0.00	0.00	0.00	17,565,780.80	17,459,973.10	0.00	12,531.77	0.00	0.00	0.00	17,565,780.80