

Dinsmoor Woods Red Pine Harvest Project

Planning Process and Operational Overview

Presented to the Municipal Services, Facilities, and
Infrastructure Committee

Alex Barrett
NH Forester #461
Long View Forest

Wednesday, March 25, 2026

Dinsmoor Woods Red Pine Harvest

Municipal Services, Facilities, and Infrastructure Committee

- Introductions and roles of Long View and selected contractor, Crown Point Excavation
- Overview of project- history and the current why
- Planning Process
- Operational Overview and Next Steps
- Questions and Discussion

Overview of project- history and the current why



A southern New Hampshire pine forest was entirely blown down in the hurricane of 1938. U.S. Forest Service

Source: <https://www.smithsonianmag.com/history/1938-hurricane-revived-new-englands-fall-colors-180964975/> Accessed 3.23.26



Looking southwest through the red pine along Maple Ave



Dead red pine along Route 2 in Massachusetts

WHAT IS RED PINE SCALE?

Red Pine Scale is an invasive pest found throughout New England, New York, Pennsylvania, and New Jersey; it was identified in NH Bear Brook State Park in 2012 and in the Yale Forest (Swanzy) in 2024. The invasive pest travels by wind and bird, solely impacting Red Pine trees. Red Pine Scale feeds on the Red Pine tree's inner bark, causing crown thinning, needle loss, and ultimately, tree death. Early signs of infestation include a white, cotton-like material on lower branches of the tree crown and a rusty discoloration of needles starting at the base of the crown. The only effective control is tree removal.



WHAT IS KEENE DOING ABOUT RED PINE SCALE?

Keene Parks & Recreation is working closely with the New Hampshire Division of Forests and Lands and the UNH Cooperative Extension community foresters, urban foresters, and forest health specialists to educate our community. The FY26 Capital Improvement Program includes forestry assessment funding. Stay up to date with educational outreach, information opportunities, and future plans on our website: keeneh.gov/parks-trails-recreation/



Evidence of RPS infestation



Eventual red pine tree mortality



Area of existing blow down along Maple Ave.
-root rot pockets

Planning Process

- Parks and Recreation Outreach work
- Long View brought in November 2025
- Planning and Layout
- Pre-Proposal Meeting February 18,2026
- Project awarded to Crown Point Excavation



Harvest Planning Map
for lands belonging to
City of Keene
Maple Ave, Keene, NH

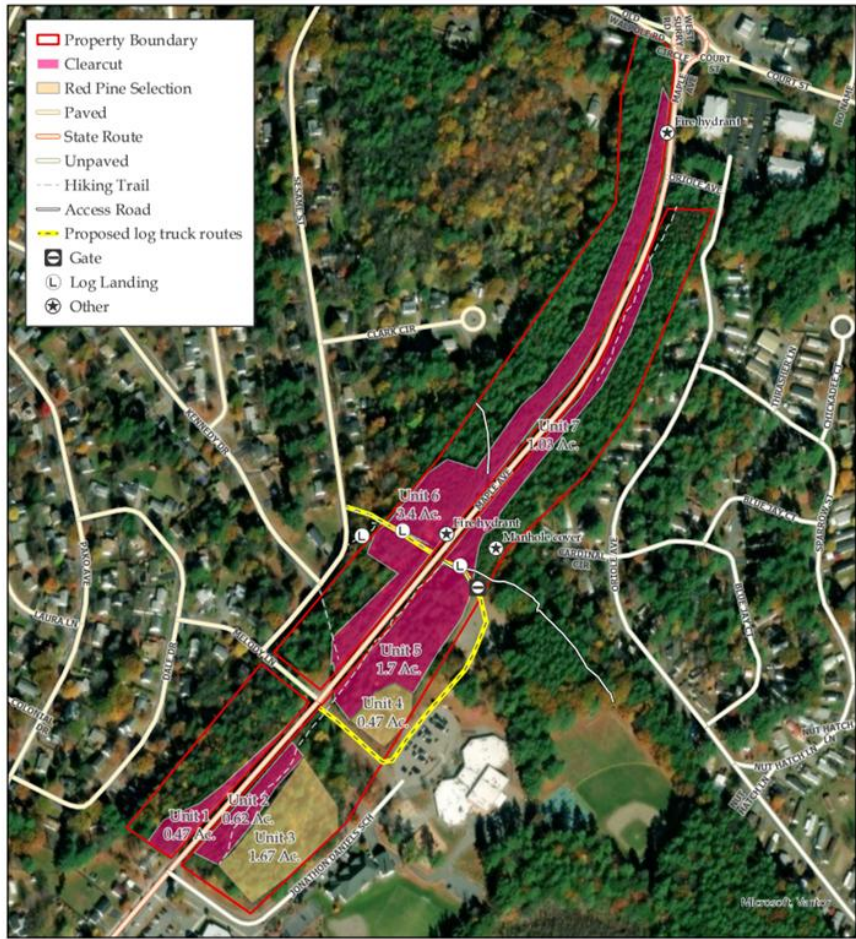


Red pine along Maple Ave



Operational Process

- April 25- Machinery begins arriving
- April 27- April 30, Maple Ave closed in affected area
 - Logging
 - Merchandizing and Trucking
- May 1- May 9 Potential continued trucking of wood
- May 15- Project Complete
- Summer and Fall 2026- monitoring and invasives control
- Spring 2026 and onwards- forest stewardship



Harvest Planning Map
for lands belonging to
City of Keene
Maple Ave, Keene, NH



Grapple Skidder pulling a hitch of wood in Walpole, NH this winter





Harvest Planning Map
for lands belonging to
City of Keene
Maple Ave, Keene, NH



Log Landing in Walpole, NH this winter.



Discussion and Questions

Alex Barrett

Long View Forest

abarrett@longviewforest.com

Direct Line: 802-359-4505